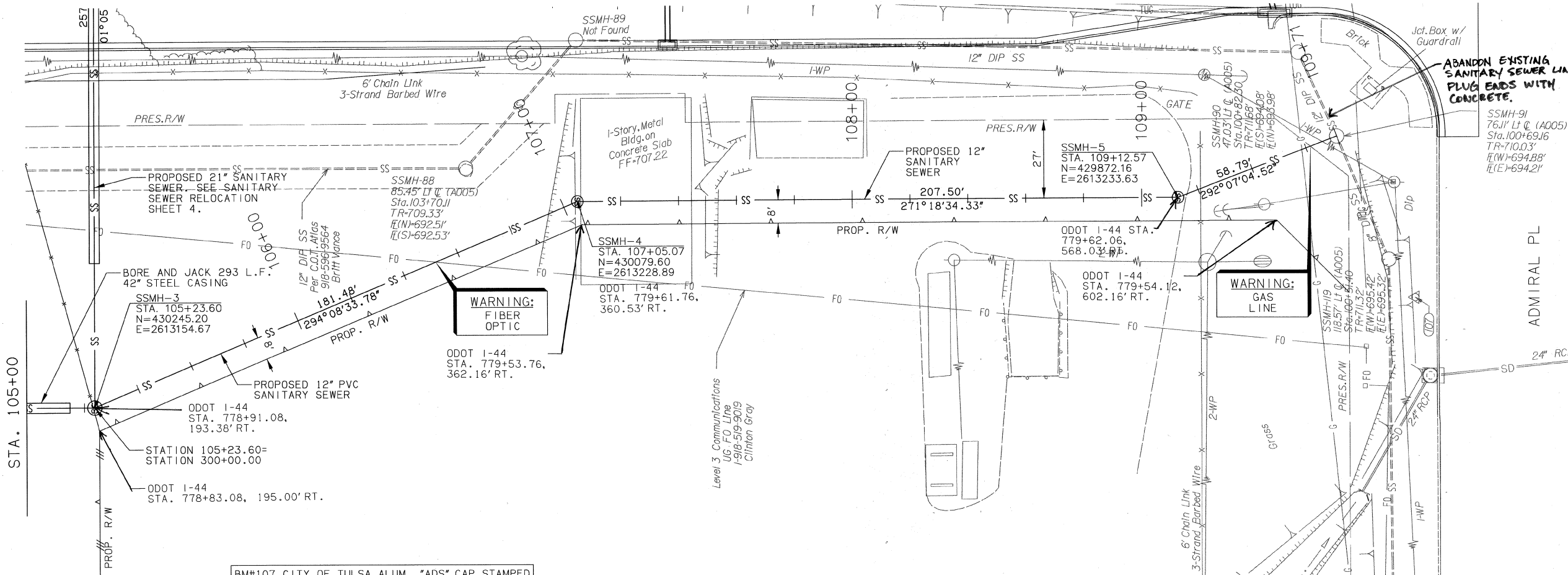
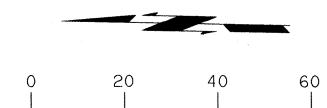


SEC 4 T19N R14E

OKLAHOMA DEPARTMENT OF TRANSPORTATION

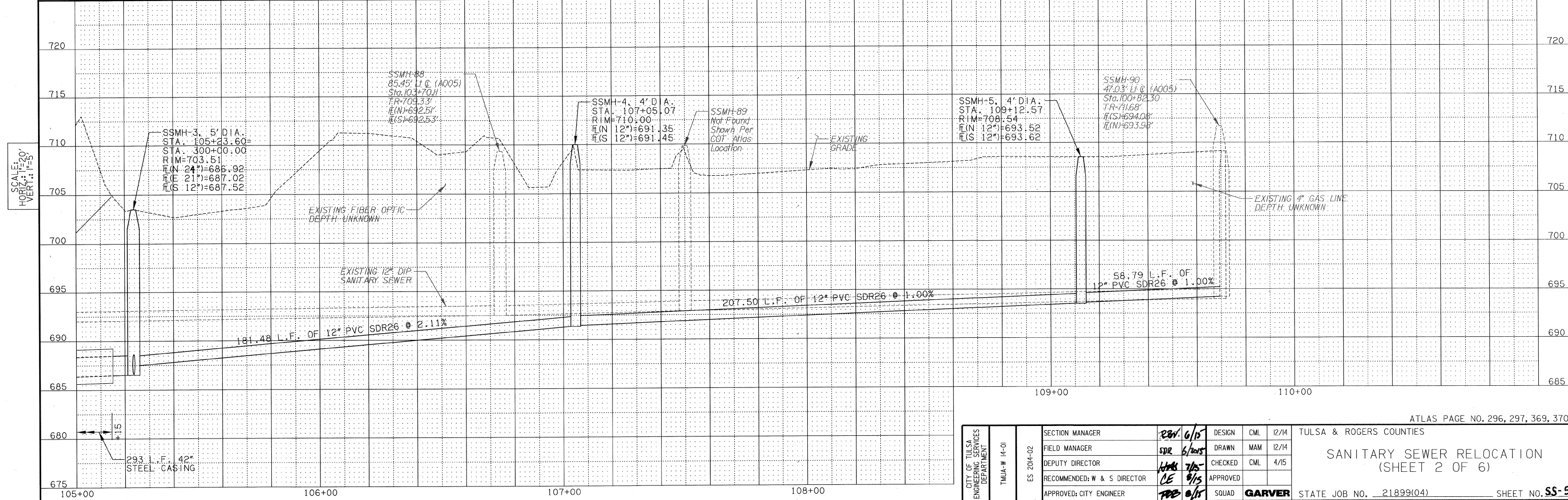
FED. ROAD DIST. NO.	STATE	JOB PIECE NO.	FISCAL YEAR	SHEET NO.	TOTAL SHEETS
X	OKLA.	21899(04)			

DESCRIPTION REVISIONS DATE



BM#107 CITY OF TULSA ALUM. "ADS" CAP STAMPED  
"RESET 7" 131.82' LT. OF (A005) STA. 100+42.33

SEC 4 T19N R14E



CITY OF TULSA ENGINEERING SERVICES DEPARTMENT	TMUA-W 14-01	SECTION MANAGER	REV. 6/15	DESIGN	CML 12/14	TULSA & ROGERS COUNTIES
		FIELD MANAGER	SDR 6/20/15	DRAWN	MAM 12/14	SANITARY SEWER RELOCATION (SHEET 2 OF 6)
		DEPUTY DIRECTOR	WAB 7/15	CHECKED	CML 4/15	
		RECOMMENDED: W & S DIRECTOR	CE 9/15	APPROVED		
		APPROVED: CITY ENGINEER	ABE 6/15	SQUAD	<b>GARVER</b>	STATE JOB NO. 21899(04) SHEET NO. <b>SS-5</b>