

SEC 3 T19N R14E

SEC 34 T20N R14E

OKLAHOMA DEPARTMENT OF TRANSPORTATION

FED. ROAD DIST. NO.	STATE	JOB PIECE NO.	FISCAL YEAR	SHEET NO.	TOTAL SHEETS
X	OKLA.	21899(04)			



ODOT I-44
STA. 806+60.20, 134.61' RT

STA. 50+37.62
N=430363.13
E=2615921.89
FURNISHED BY CONTRACTOR,
INSTALLED BY CONTRACTOR
1-8" 45° BEND, REST.
2-8" VERT. 45° BENDS, REST.

STA. 50+00.00
N=430335.08
E=2615945.32
FURNISHED BY CONTRACTOR,
INSTALLED BY CONTRACTOR
1-8" 45° BEND, REST.
1-8" GATE VALVE, REST.
1-8" SOLID SLEEVE, REST.
1-VALVE BOX

ODOT I-44
STA. 806+83.02, 163.15' RT

ABANDON EXISTING WATER LINE IN
PLACE. CUT & PLUG END WITH
CONCRETE.

STA. 53+12.50
N=430640.30
E=2615918.76
FURNISHED BY CONTRACTOR,
INSTALLED BY CONTRACTOR
2-8" VERT. 45° BENDS, REST.
1-8" GATE VALVE, REST.
1-VALVE BOX
1-8"X8"X6" TEE, REST.
1-3-WAY FHYD, REST.

STA. 53+44.24
N=430699.73
E=2615918.42
FURNISHED BY CONTRACTOR,
INSTALLED BY CONTRACTOR
1-8"X8"X8" TEE, REST.
1-8" 45° BEND, REST.

ODOT I-44
STA. 806+63.30, 174.00' RT

STA. 53+68.62
N=430690.53
E=2615927.09
FURNISHED BY CONTRACTOR,
INSTALLED BY CONTRACTOR
1-8" 45° BEND, REST.
1-8" SOLID SLEEVE, REST.

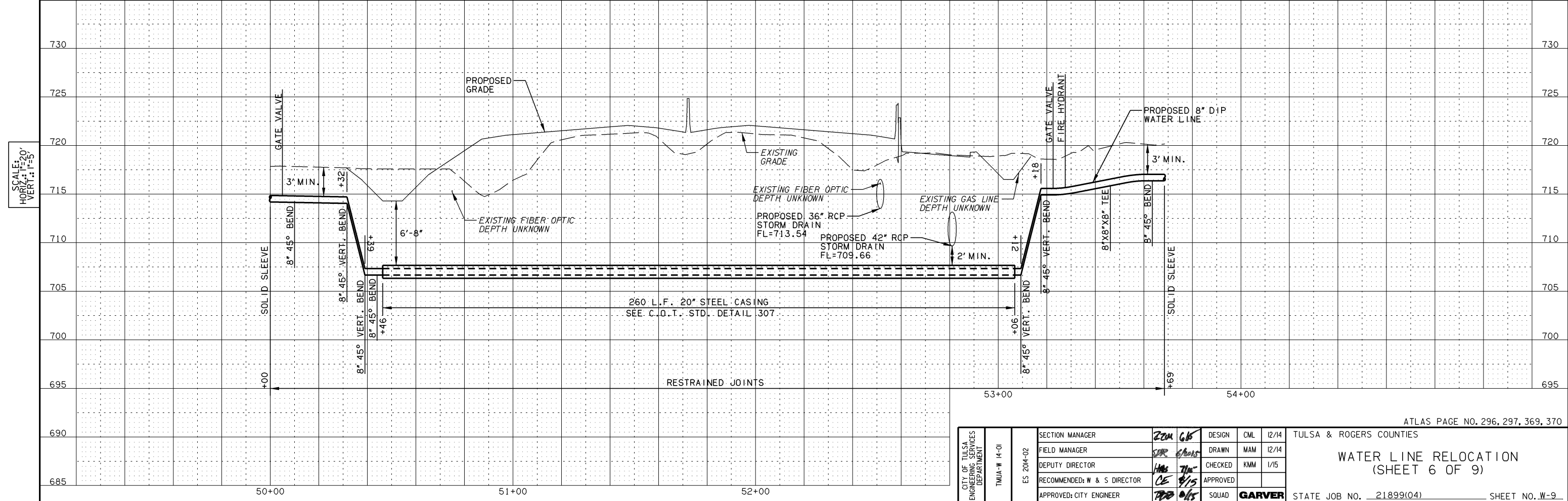
ODOT I-44
STA. 806+72.40, 192.60' LT

BM#102 #5 REBAR FLUSH WITH GROUND 100.46' RT. OF
(A001) STA. 806+97.74

SEC 3 T19N R14E

SEC 34 T20N R14E

BM#135 #4 REBAR SET FLUSH WITH GROUND 99.88' LT.
OF (A001) STA. 806+82.41



SCALE:
HORIZ.: 1"=20'
VERT.: 1"=5'

ATLAS PAGE NO. 296, 297, 369, 370

CITY OF TULSA ENGINEERING SERVICES DEPARTMENT	TMUA-W 14-01	SECTION MANAGER	ZEM GBS	DESIGN	CML	12/14
	ES 2014-02	FIELD MANAGER	SRP GBOAS	DRAWN	MAM	12/14
		DEPUTY DIRECTOR	HAR JIN	CHECKED	KMM	1/15
		RECOMMENDED: W & S DIRECTOR	CE 8/15	APPROVED		
		APPROVED: CITY ENGINEER	TRB GBS	SQUAD	GARVER	

TULSA & ROGERS COUNTIES
WATER LINE RELOCATION
(SHEET 6 OF 9)

STATE JOB NO. 21899(04) SHEET NO. W-9