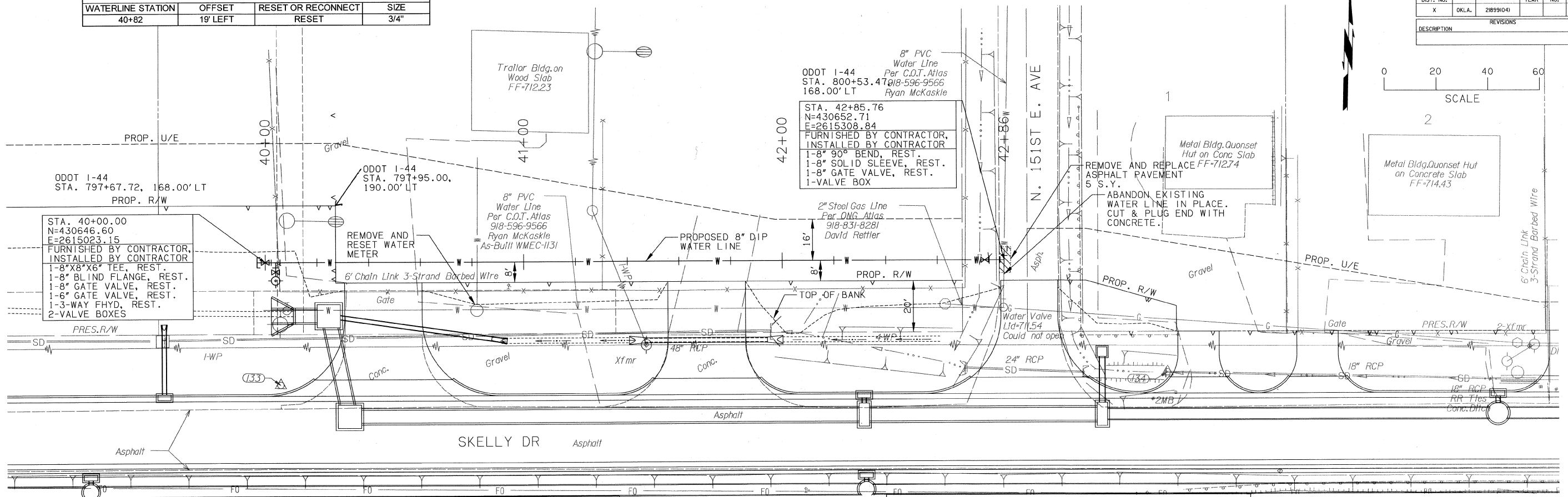
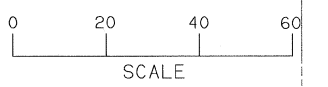


WATERLINE SERVICE CONNECTIONS			
WATERLINE STATION	OFFSET	RESET OR RECONNECT	SIZE
40+82	19' LEFT	RESET	3/4"

SEC 34 T20N R14E

OKLAHOMA DEPARTMENT OF TRANSPORTATION						
FED. ROAD DIST. NO.	STATE	JOB PIECE NO.	FISCAL YEAR	SHEET NO.	TOTAL SHEETS	
X	OKLA.	21899(04)				
DESCRIPTION					REVISIONS	DATE

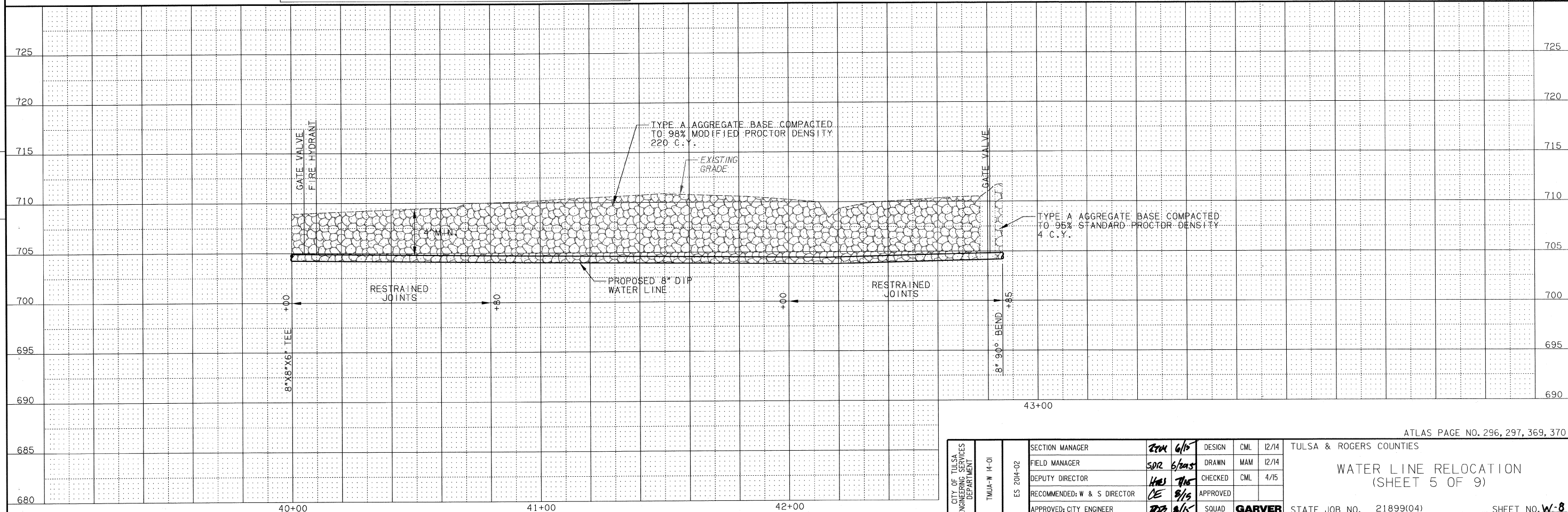


BM#133 ODOT #4 REBAR FLUSH WITH GROUND ODOT STA. R-66-1107 120.33' LT. OF (A001) STA. 797+73.59

SEC 34 T20N R14E

BM#134 CHISELED BOX ON TOP OF HEADWALL FOR DRIVE 124.36' LT. OF (A001) STA. 801+16.47

SCALE:
HORIZ. 1"=20'
VERT. 1"=5'



CITY OF TULSA ENGINEERING SERVICES DEPARTMENT	SECTION MANAGER	<i>ERM 6/15</i>	DESIGN	CML	12/14	TULSA & ROGERS COUNTIES
	FIELD MANAGER	<i>SDR 6/20/15</i>	DRAWN	MAM	12/14	
	DEPUTY DIRECTOR	<i>HWS 7/15</i>	CHECKED	CML	4/15	
	RECOMMENDED: W & S DIRECTOR	<i>CE 8/15</i>	APPROVED			
	APPROVED: CITY ENGINEER	<i>RD 8/15</i>	SQUAD	GARVER		

ATLAS PAGE NO. 296, 297, 369, 370

WATER LINE RELOCATION
(SHEET 5 OF 9)

STATE JOB NO. 21899(04) SHEET NO. **W-8**