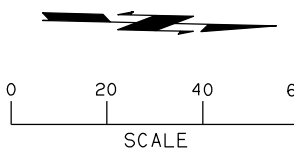


SEC 4 T19N R14E

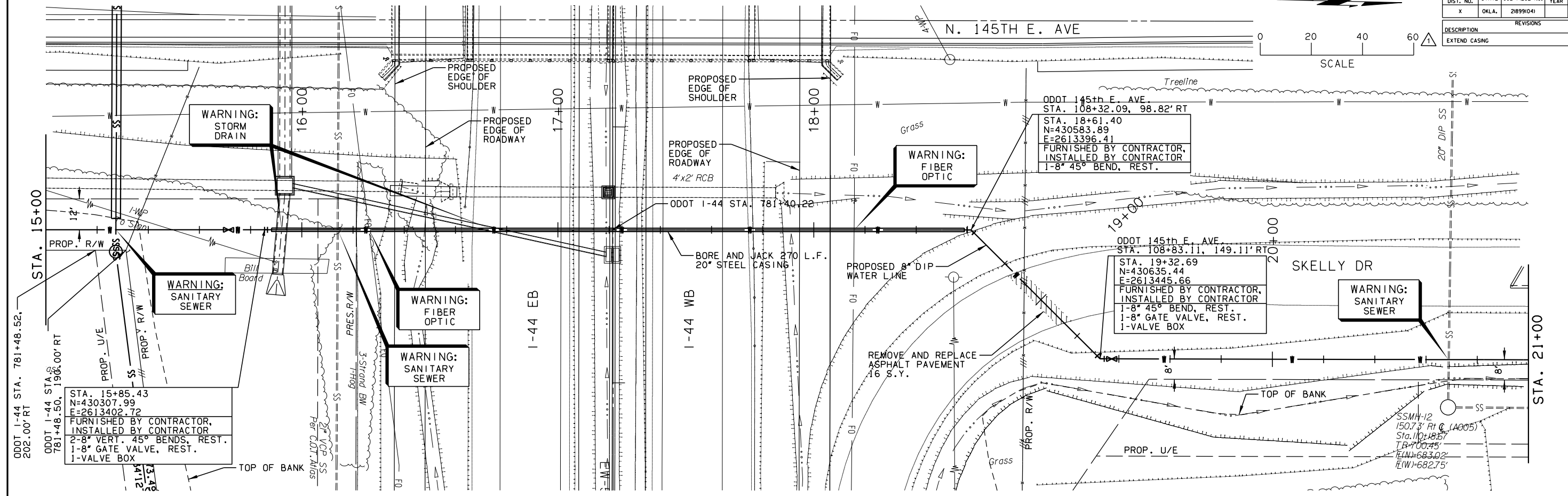
SEC 33 T20N R14E

OKLAHOMA DEPARTMENT OF TRANSPORTATION

FED. ROAD DIST. NO.	STATE	JOB PIECE NO.	FISCAL YEAR	SHEET NO.	TOTAL SHEETS
X	OKLA.	21899/04			
REVISIONS					DATE
DESCRIPTION					
EXTEND CASING					07/11/2016

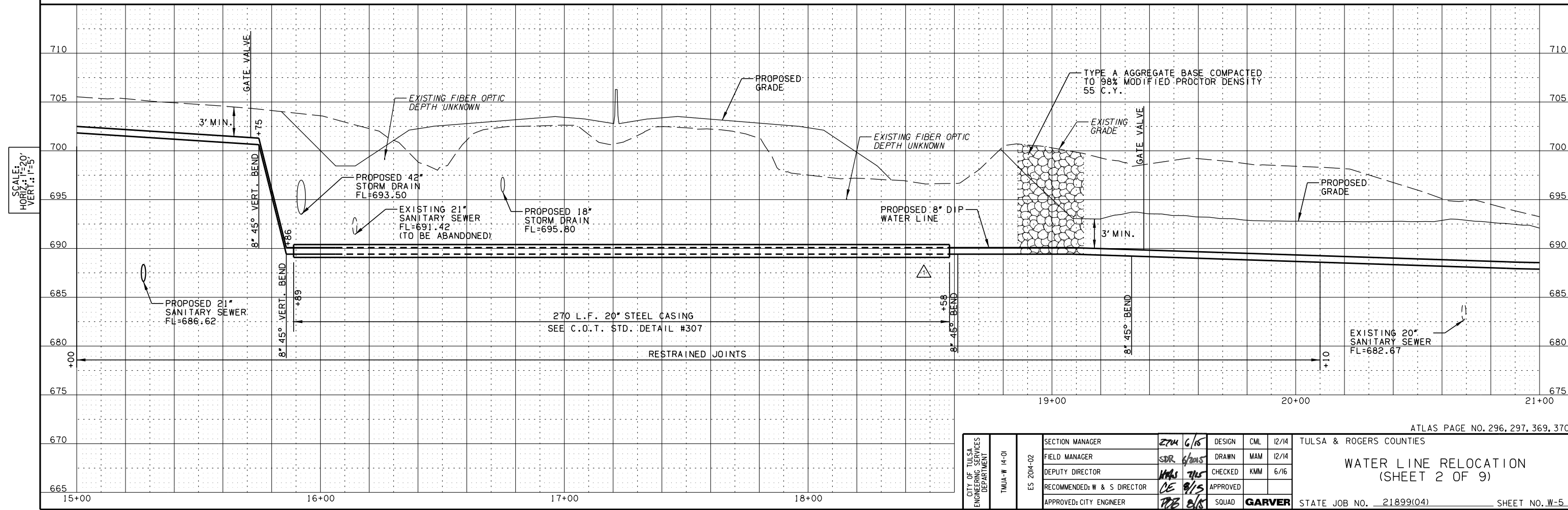


N. 145TH E. AVE



SEC 3 T19N R14E

SEC 34 T20N R14E



SCALE:
HORIZ.: 1"=20'
VERT.: 1"=5'

ATLAS PAGE NO. 296, 297, 369, 370

CITY OF TULSA ENGINEERING DEPARTMENT	SECTION MANAGER	ZTM 6/16	DESIGN	CML 12/14	TULSA & ROGERS COUNTIES
	FIELD MANAGER	SDR 6/20/15	DRAWN	MAM 12/14	
	DEPUTY DIRECTOR	MAS 7/15	CHECKED	KMM 6/16	
	RECOMMENDED: W & S DIRECTOR	CE 8/15	APPROVED		
	APPROVED: CITY ENGINEER	TJB 8/15	SQUAD	GARVER	

STATE JOB NO. 21899/04 SHEET NO. W-5