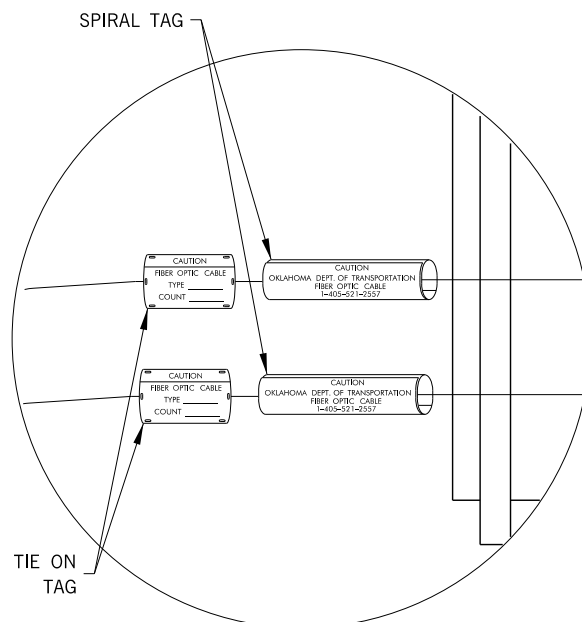
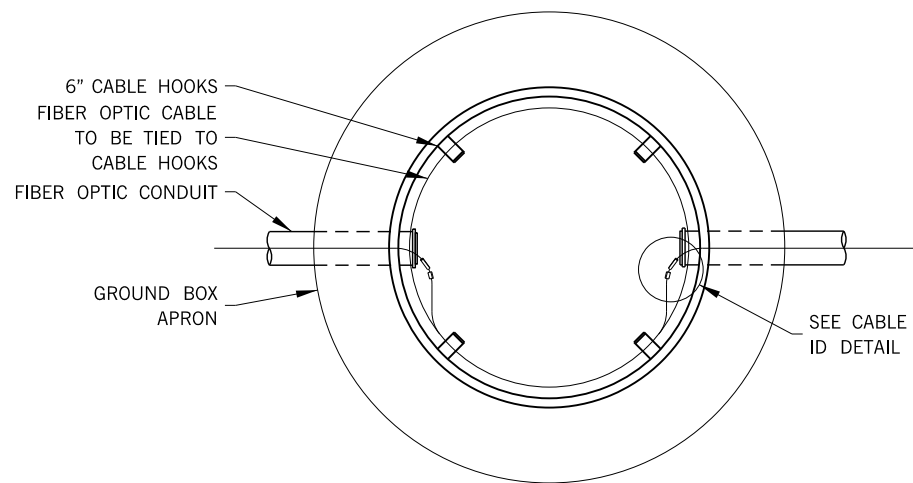


REV. NO.	DESCRIPTION	REVISIONS	DATE
1	PAGE ADDED		8/22/16



**CAUTION**  
OKLAHOMA DEPT. OF TRANSPORTATION  
FIBER OPTIC CABLE  
1-405-521-2557  
**SPIRAL CABLE OWNERSHIP TAG**

HELLERMAN-TYTON INC.  
STOCK # CMF040T  
CABLE MARKER  
OR APPROVED EQUAL

**CAUTION**  
FIBER OPTIC CABLE  
TYPE \_\_\_\_\_  
COUNT \_\_\_\_\_  
**TIE-ON OWNERSHIP TAG**

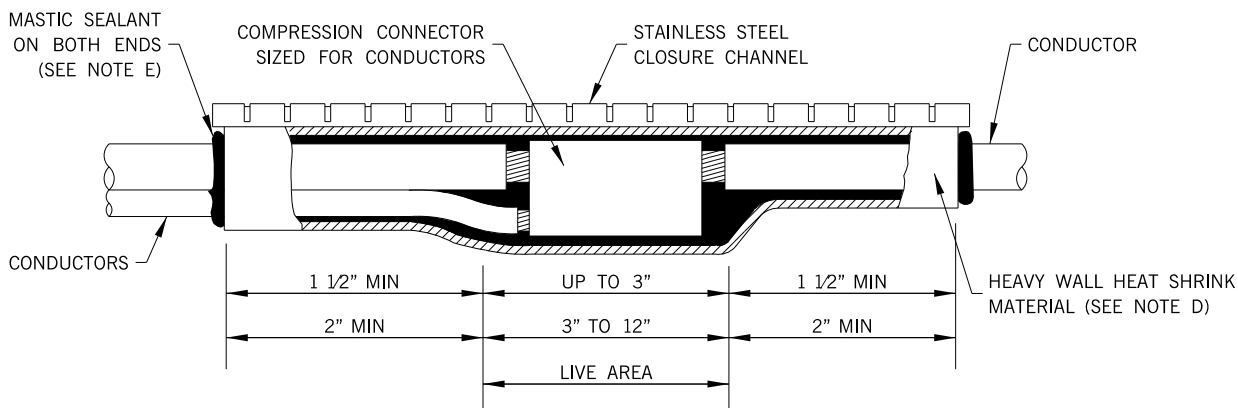
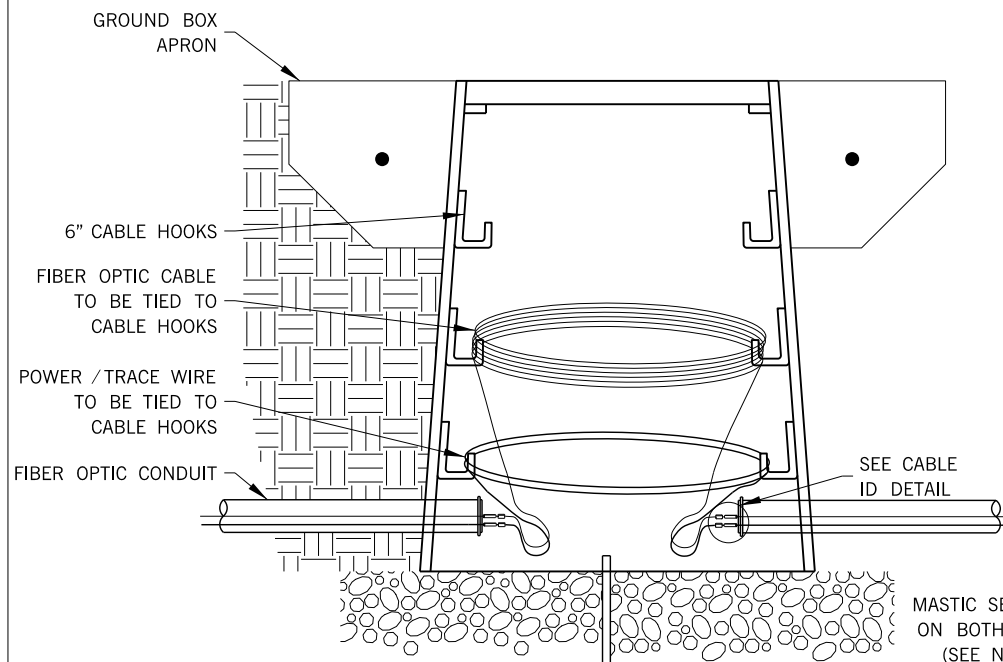
PANDUIT INC.  
STOCK # PST-FO  
SELF-LAM TAG  
OR APPROVED EQUAL

**MATERIAL SPECIFICATIONS AND GENERAL NOTES**

- A. FUSES SHALL BE CURRENT-LIMITING TYPE, PREFERABLY BUSSMANN MANUFACTURING, MODEL KTK. SIZED AS SPECIFIED IN THE PLANS.
- B. LINE /LOAD CONDUCTORS, SPLICES AND FUSE HOLDER CONNECTIONS SHALL BE INSULATED AND BE MADE WATERPROOF.
- C. ALL CONDUCTOR SPLICES SHALL BE MADE WITH APPROPRIATELY SIZED COMPRESSION TYPE CONNECTORS, UNLESS OTHERWISE SPECIFIED. CONNECTORS SHALL BE COMPATIBLE WITH THE CONDUCTOR MATERIAL AND INSTALLED IN ACCORDANCE WITH THE MANUFACTURE'S RECOMMENDATIONS. "WIRE NUTS/SPRING CONNECTORS" ARE NOT ACCEPTABLE CONNECTORS TO BE USED AS A SPLICING DEVICE.
- D. CROSS LINKED POLYOLEFIN HEAT SHRINK COMPOSITION MATERIAL SHALL HAVE A HOT-MELT ADHESIVE THICKNESS OF AT LEAST 0.06", APPROVED FOR DIRECT BURIAL TO 600V /90 c IN ACCORDANCE WITH ANSI C119.1-1986.
- E. MASTIC SEALANT SHALL BE NON-CORROSIVE AND IN ACCORDANCE WITH ASTM.

**TAPING NOTES:**

- 1. CONSTRUCTOR SHALL MARK ALL CONDUCTORS, FIBER AND COMMUNICATION CABLES AS THEY ENTER /LEAVE ANY GROUND BOX, PULL BOX, ITS CABINET, SIGNAL CABINET, DMS, POLE, STRUCTURE, ETC. WHERE WIRE IS ACCESSED OR VISIBLE WITH COLOR CODED ELECTRICAL TAPE OR USING COLOR CABLE TIES (40 LBS) AS SHOWN IN THE CONDUCTOR COLOR CHART.
- 2. THE CONTRACTOR SHALL MARK EACH CONDUCTOR WITH COLORED TAPE. TAPE SHALL CONSIST OF A HALF-LAP LAYER OF TAPE COVERING A SIX (6) INCH LENGTH OF THE CONDUCTOR. THE CONDUCTOR ENTERING OF LEAVING THE ABOVE MENTIONED ACCESS LOCATIONS AND/OR AT ACCESS POINTS SUCH AS HANDHOLES IN POLES OR STRUCTURES, GROUND BOXES AND CABINETS SHALL NOT BE PAID FOR UNTIL PROPER AND CORRECT MARKING OF CONDUCTOR IS COMPLETED TO THE ENGINEERS SATISFACTION.



**TYPICAL CONDUCTOR TAP AND/OR SPLICE WITH HEAT SHRINK WRAP AROUND SLEEVE**  
(MIN. LENGTH: 6" FOR #4 AWG CONDUCTORS)

CONDUCTOR COLOR CHART			
CONDUCTOR	VOLTAGE	LOAD	COLOR
COAX	N/A	N/A	GREEN
FIBER	N/A	N/A	YELLOW
TELEPHONE	N/A	N/A	BLUE
DMS POWER	120V / 240V	LOAD	BLACK & BROWN
		NEUTRAL	WHITE & BROWN
CABINET POWER	120V	LOAD	BLACK & ORANGE
		NEUTRAL	WHITE & ORANGE

DRAWINGS NOT TO SCALE

BASIS OF PAYMENT		
ITEM NO.	ITEM	UNIT
818(A)	FIBER OPTIC CABLE	LF

MARKING, TAPING, AND CONNECTOR DETAIL		
Drawn	JEK	7/16
Design	JEK	7/16
Checked	JS	7/16
MAINTENANCE/ITS GROUP JARED SCHWENNESEN		
STATE OF OKLAHOMA	DEPARTMENT OF TRANSPORTATION	
DIVISION 8	STATE JOB NO. 21866(04)	SHEET NO. ITS-20