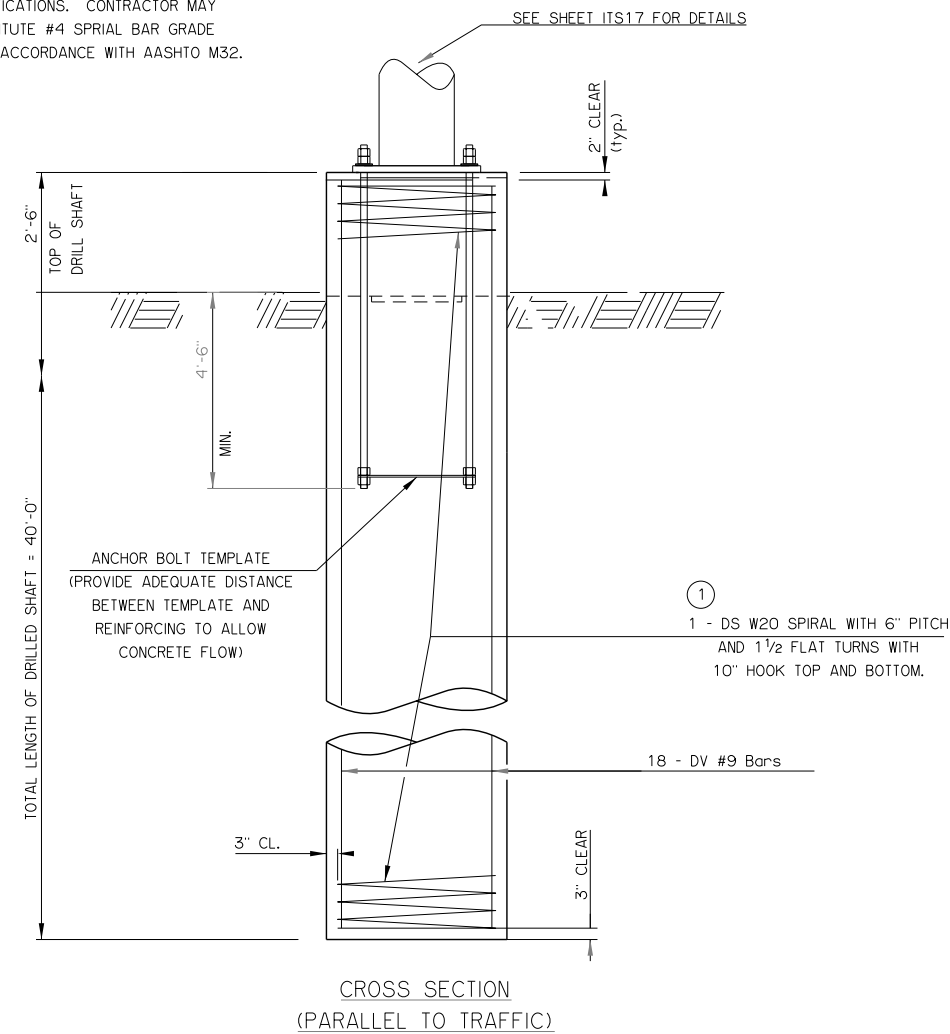


REV. NO.	DESCRIPTION	REVISIONS	DATE
1	PAGE ADDED		8/22/16

① USE W20 SPIRAL IN ACCORDANCE WITH 723.07 OF THE STANDARD SPECIFICATIONS. CONTRACTOR MAY SUBSTITUTE #4 SPIRAL BAR GRADE 60 IN ACCORDANCE WITH AASHTO M32.



DRILLED SHAFT NOTES:

MATERIAL PROPERTIES
 CLASS 'AA' CONCRETE = 4,000 PSI
 REINFORCING STEEL = 60,000 PSI

THE DRILLED SHAFT FOR THE 1999 STANDARD OVERHEAD SIGN STRUCTURES 'D' AND 'E' HAVE BEEN DESIGNED FOR THE FOLLOWING PROPERTIES:

- COHESIVE SOIL
 UNIT WEIGHT = 120 PCF
 COHESION = 1000 PSF
- GRANULAR SOIL
 UNIT WEIGHT = 120 PCF
 INTERNAL FRICTION ANGLE = 28 DEGREES

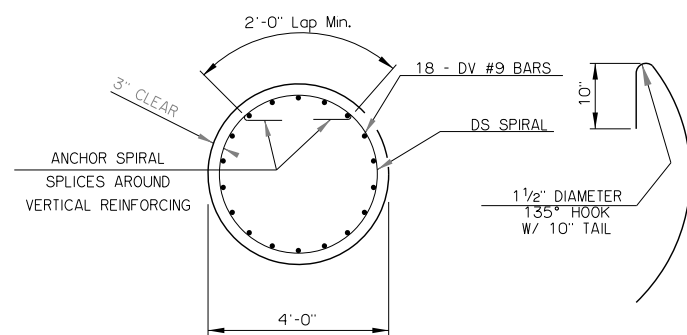
IF SITE CONDITIONS ARE ENCOUNTERED THAT DIFFER FROM THOSE SPECIFIED ABOVE, THE ENGINEER SHALL BE CONTACTED. SUCH CONDITIONS ARE, BUT NOT LIMITED TO, AS FOLLOWS:

- SOIL HAS HIGH ORGANIC CONTENT OR CONSISTS OF SATURATED SILT AND CLAY.
- THE SITE WON'T SUPPORT THE WEIGHT OF THE DRILLING RIG.
- ROCK IS ENCOUNTERED.

DRILLED SHAFTS SHALL BE CONSTRUCTED ACCORDING TO THE OKLAHOMA DEPARTMENT OF TRANSPORTATION'S STANDARD SPECIFICATIONS FOR HIGHWAY CONSTRUCTION AND ASSOCIATED SPECIAL PROVISIONS. THE USE OF THE "DOUBLE CASING METHOD" IS NOT ALLOWED FOR THIS DESIGN.

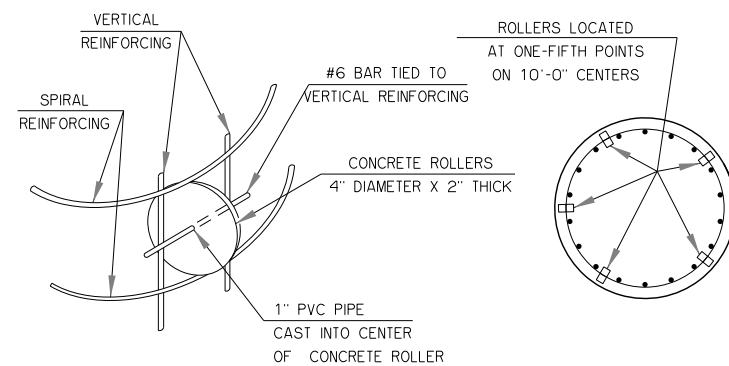
THE CONTRACTOR SHALL BE RESPONSIBLE FOR CONFIRMING THAT THE LOCATION AND ELEVATION OF THE DRILLED SHAFT IS AS REQUIRED IN THE PLANS. THE CONTRACTOR SHALL COORDINATE WITH THE STRUCTURE SUPPLIER TO ENSURE THAT THE ORIENTATION OF THE ANCHOR BOLTS IN THE DRILLED SHAFT ALLOW FOR PROPER ALIGNMENT OF THE BASE.

NOTE: CONCRETE LONGITUDINAL BARRIER SHALL BE CONSTRUCTED IN ACCORDANCE WITH ROADWAY STANDARD CLB-1 EXCEPT FOR AS SHOWN HERE.



TYPICAL SECTION THRU 48" DRILLED SHAFT AND SPIRAL REINFORCING SPLICE DETAIL

NOTE: SPIRAL BAR LENGTH QUANTITY DOES NOT INCLUDE LAP. IF LAP IS REQUIRED, THE LENGTH OF THE LAP SHALL BE AS SHOWN.



ROLLER INSTALLATION

ROLLER PLACEMENT

DETAIL OF CONCRETE ROLLERS

NOTE: IF CONCRETE ROLLERS ARE USED, THE CONCRETE IN THE ROLLERS SHALL HAVE A MINIMUM 28 DAY COMPRESSIVE STRENGTH OF 4,000 P.S.I. PLASTIC ROLLERS MAY BE USED IN ACCORDANCE WITH THE STANDARD SPECIFICATIONS..

DRILLED SHAFT BAR LIST (INCLUDED IN CONTRACT UNIT PRICE OF DRILLED SHAFT)				
MARK	SIZE	NO.	FORM	LENGTH
PLAIN REINFORCING BARS				
DS	W20	1	BNT	959'-6"
DV	#9	18	STR	42'-1"

BASIS OF PAYMENT		
ITEM NO.	DESCRIPTION	UNIT
516(A)	DRILLED SHAFTS 48" DIAMETER	L.F.

DRILL SHAFT QUANTITIES			
509(A)	CLASS AA CONCRETE	CY	19.78
511(A)	REINFORCING STEEL	LB	3214

DRILLED SHAFT FOUNDATION FOR OVERHEAD SIGN STRUCTURE D			Drawn	JEK	7/16
			Design	JEK	7/16
STATE OF OKLAHOMA DEPARTMENT OF TRANSPORTATION DIVISION 8 STATE JOB NO. 21899(04)			Checked	JS	7/16
			MAINTENANCE/ITS GROUP JARED SCHWENNESEN		
SHEET NO. ITS-19			TULSA & ROGERS COUNTIES		