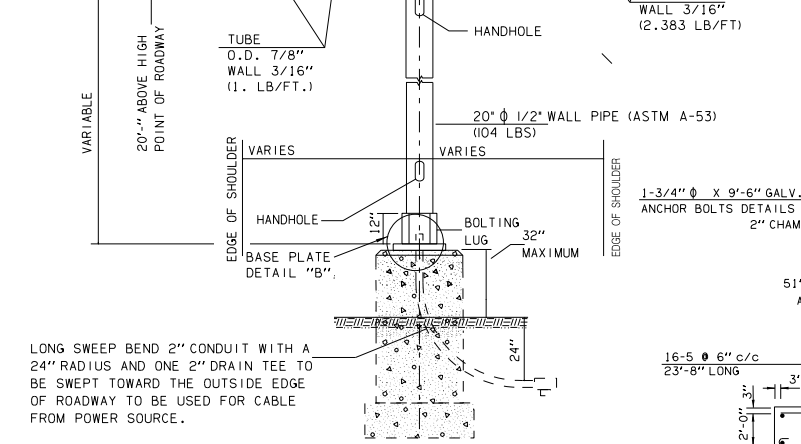
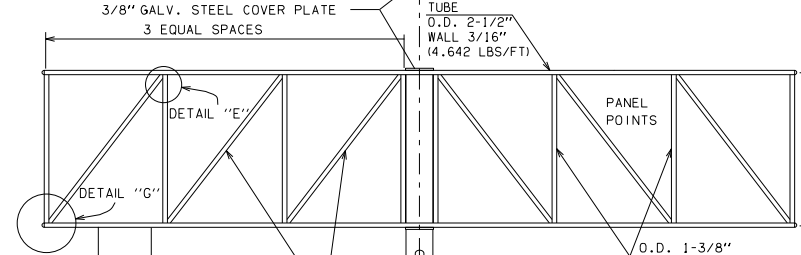
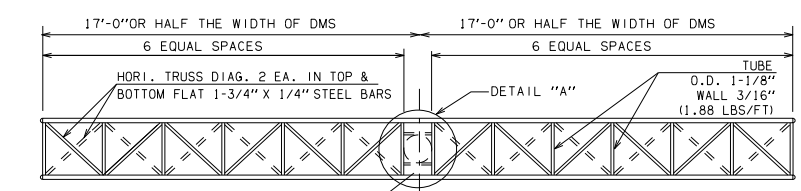
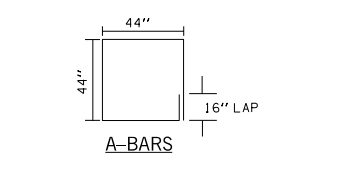


REV. NO.	DESCRIPTION	REVISIONS	DATE
1	PAGE ADDED		8/22/16

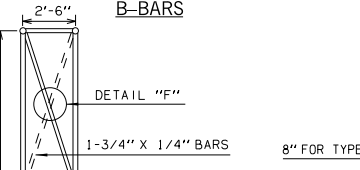


STRUCTURE "D"

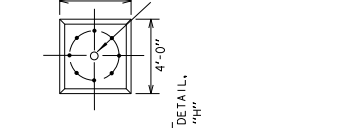
NOTE:  
HAND HOLES SHALL BE A MINIMUM 8" X 12"  
2-2" STEEL NIPPLE SHALL BE INSTALLED ON EACH SIDE OF THE PIPE 90 DEGREES FROM THE HANDHOLE, (2 TOTAL) 4" BELOW THE TRUSS STRUCTURE FOR ELECTRICAL AND COMMUNICATIONS. RIGID FLEX CONDUIT WILL BE INSTALLED BETWEEN THE SIGN AND THE NIPPLE, INCLUDED IN THE COST OF THE STRUCTURE.



A-BARS



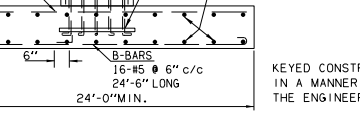
B-BARS



DETAIL "C"



DETAIL "D"



DETAIL "E"



DETAIL "F"



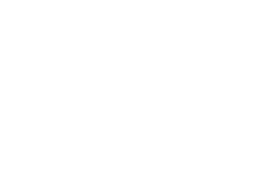
DETAIL "G"



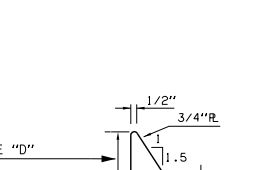
DETAIL "H"



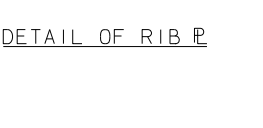
DETAIL "I"



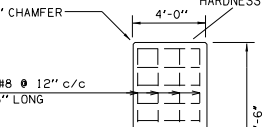
DETAIL OF RIB R



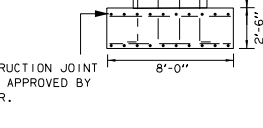
DETAIL OF RIB R



DETAIL OF RIB R



DETAIL OF RIB R



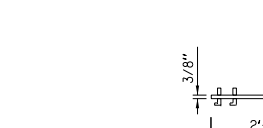
DETAIL OF RIB R



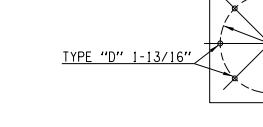
DETAIL OF RIB R



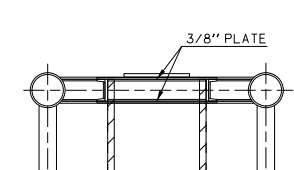
DETAIL OF RIB R



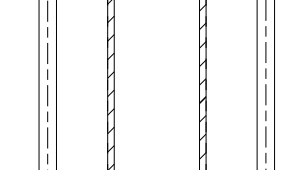
DETAIL OF RIB R



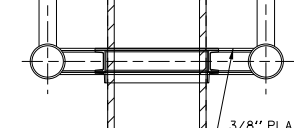
DETAIL OF RIB R



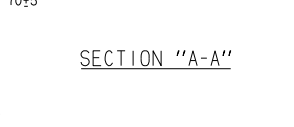
SECTION "A-A"



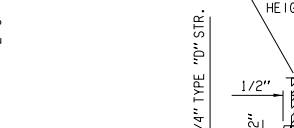
SECTION "B-B"



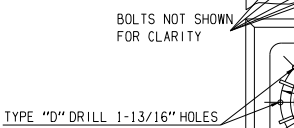
SECTION "A-A"



SECTION "B-B"



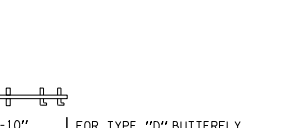
SECTION "A-A"



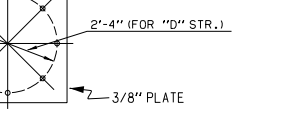
SECTION "B-B"



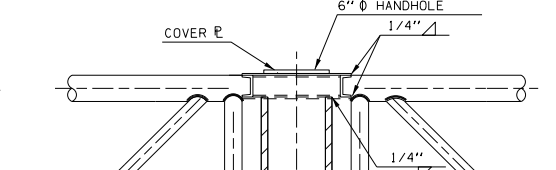
SECTION "A-A"



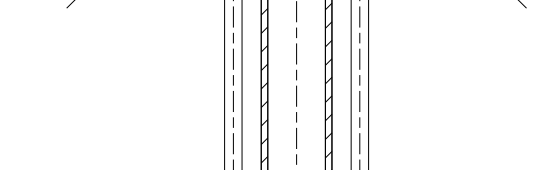
SECTION "B-B"



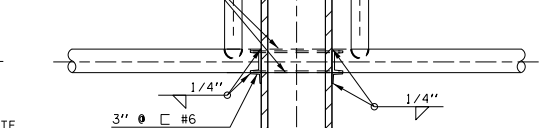
SECTION "A-A"



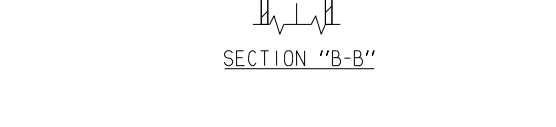
SECTION "A-A"



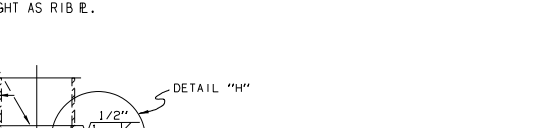
SECTION "B-B"



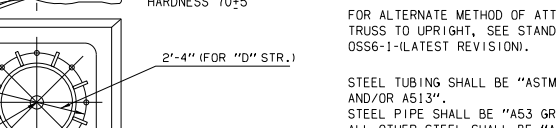
SECTION "A-A"



SECTION "B-B"



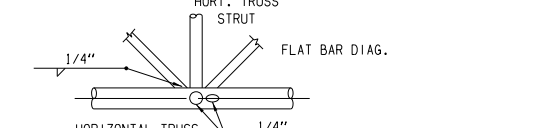
SECTION "A-A"



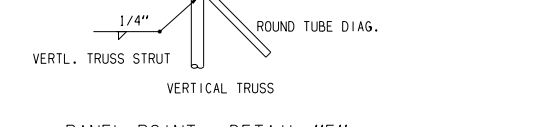
SECTION "B-B"



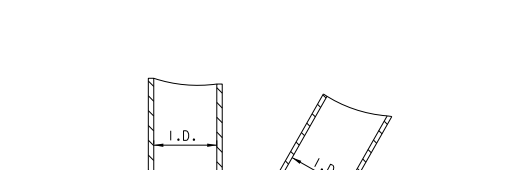
SECTION "A-A"



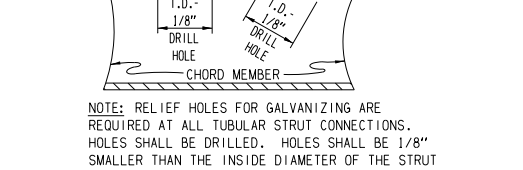
SECTION "B-B"



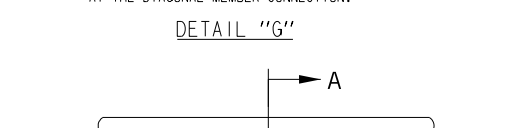
SECTION "A-A"



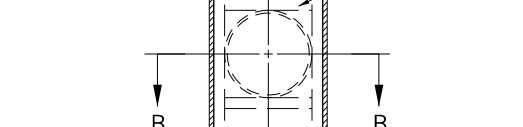
DETAIL "G"



DETAIL "G"



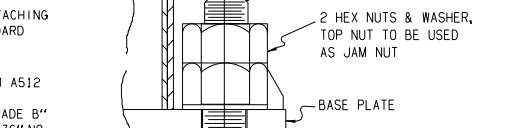
DETAIL "G"



DETAIL "G"



DETAIL "G"



DETAIL "G"



DETAIL "G"



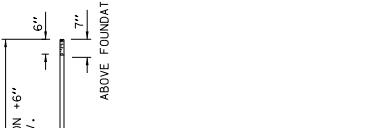
DETAIL "G"



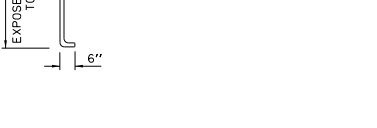
DETAIL "G"

REINFORCING STEEL = 1468 LBS  
CLASS "A" CONCRETE = 22.22 CY

FOOTING DETAILS



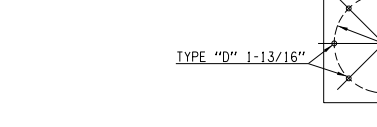
ANCHOR BOLT DETAIL "D"



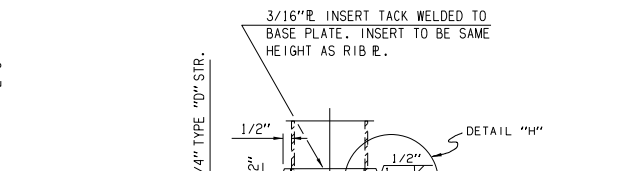
ANCHOR BOLT DETAIL "D"



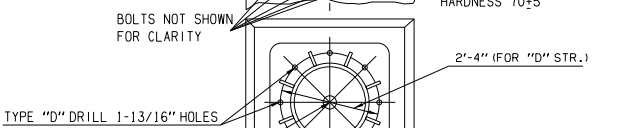
ANCHOR BOLT DETAIL "D"



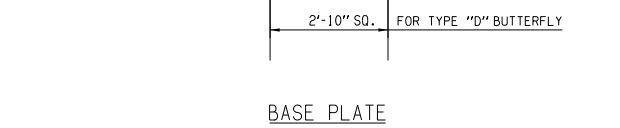
ANCHOR BOLT DETAIL "D"



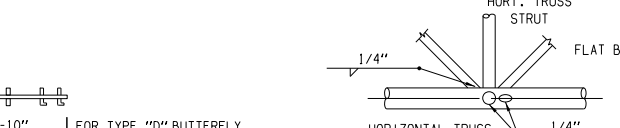
BASE PLATE DETAIL "B"



BASE PLATE DETAIL "B"



BASE PLATE DETAIL "B"



BASE PLATE DETAIL "B"



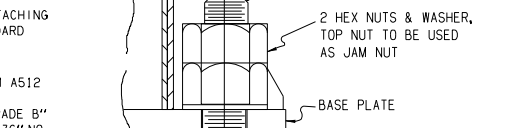
BASE PLATE DETAIL "B"

NOTE:  
FOR ALTERNATE METHOD OF ATTACHING TRUSS TO UPRIGHT, SEE STANDARD OSS6-1-LATEST REVISION.

STEEL TUBING SHALL BE "ASTM A512 AND/OR A513".  
STEEL PIPE SHALL BE "A53 GRADE B" ALL OTHER STEEL SHALL BE "A36" NO SPLICES SHALL BE PERMITTED ON ANY STRUCTURE MEMBER.

FOR O.H. WALKWAY AND ELECTRICAL DETAILS, SEE STANDARD OWE1-1-LATEST REVISION.

NOTE:  
INSIDE OR OUTSIDE SNUG FIT END CAP CHORD SEAL. SECURE WITH SET SCREW AND/OR EPOXY CEMENT.



DETAIL "F"



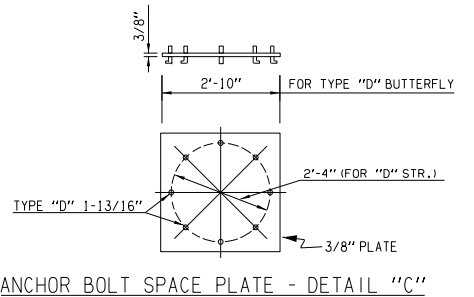
DETAIL "F"



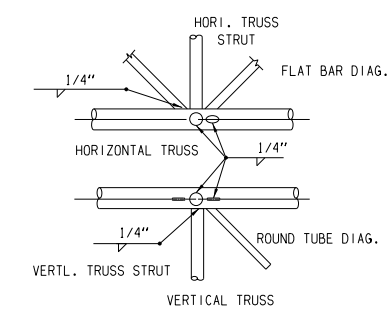
DETAIL "F"



DETAIL "F"



ANCHOR BOLT SPACE PLATE - DETAIL "C"



PANEL POINT - DETAIL "E"

OVERHEAD SIGN STRUCTURE  
D DETAIL  
(GALVANIZED STEEL)

Drawn	JEK	7/16
Design	JEK	7/16
Checked	JS	7/16
MAINTENANCE/ITS GROUP JARED SCHWENNESEN		