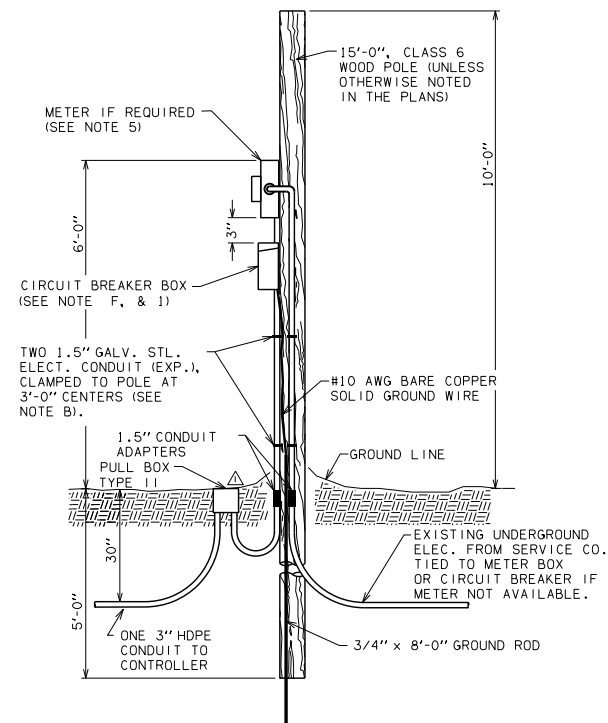
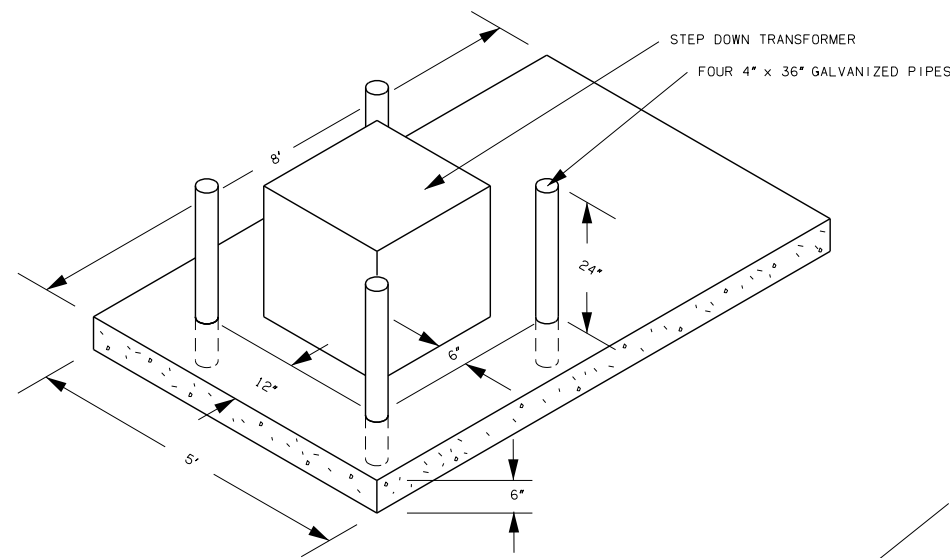


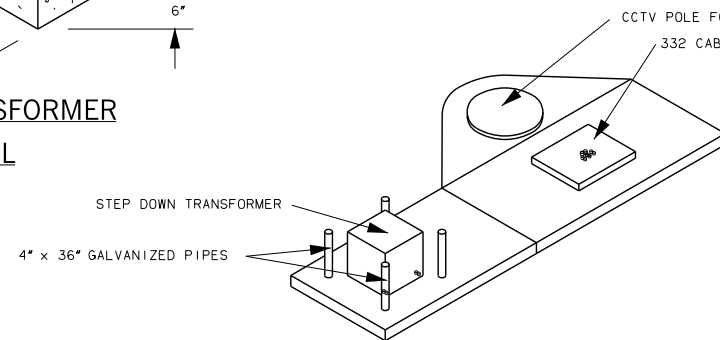
REV. NO.	DESCRIPTION	REVISIONS	DATE
1	PAGE ADDED		8/22/16



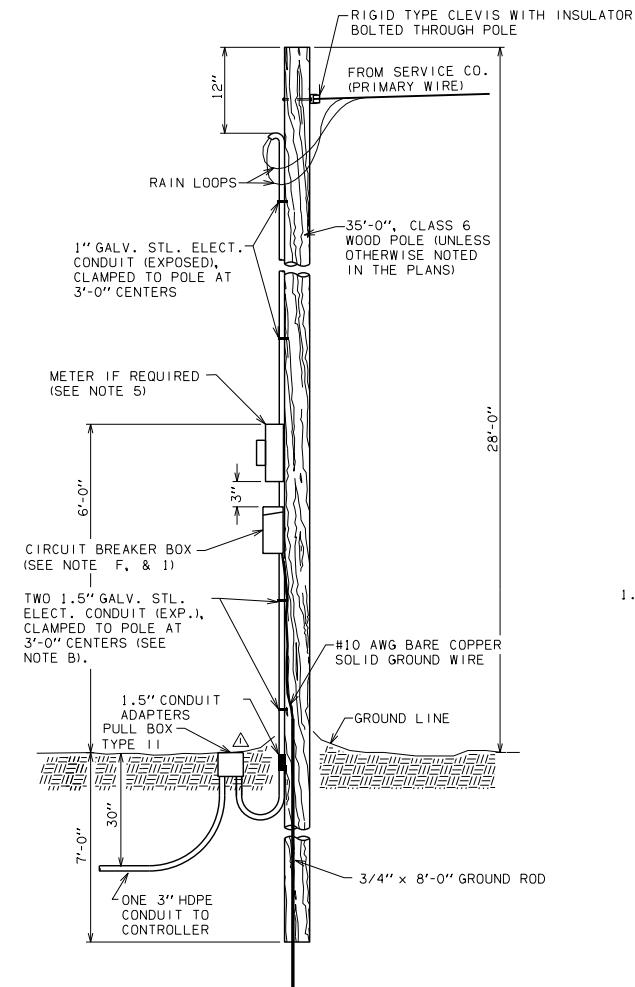
**UNDERGROUND SERVICE TO SERVICE POLE**



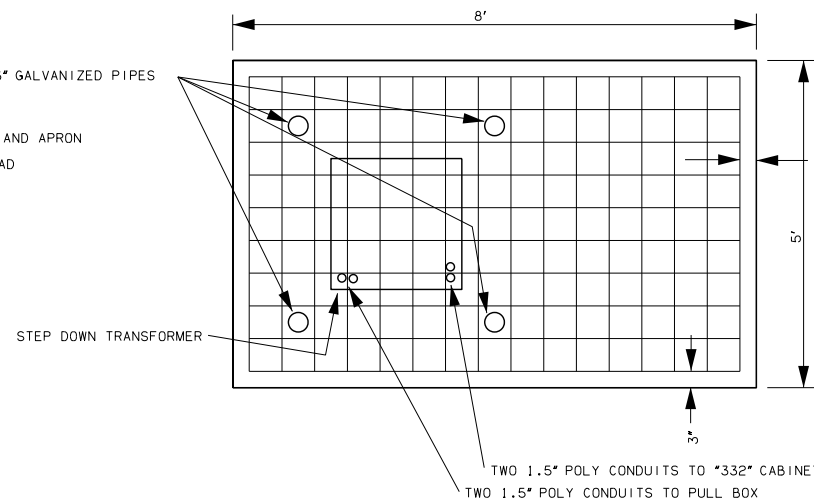
**STEP DOWN TRANSFORMER PAD DETAIL**



**TYPICAL PAD LAYOUT NEXT TO 332 CABINET PAD**



**OVERHEAD SERVICE TO SERVICE POLE**



**6"x6" FABRIC WIRE AND CONDUIT PLACEMENT DETAIL**

**MATERIAL SPECIFICATIONS**

- A. ELECTRICAL CONDUIT SHALL BE IN ACCORDANCE WITH SECTION 802 OF THE STANDARD SPECIFICATIONS.
- B. 1/C NO. 0 AWG ELECTRICAL CONDUCTOR SHALL BE USED TO SUPPLY POWER FROM THE POWER SOURCE(S) TO THE CONTROLLER.
- C. ALL CONDUIT CLAMPS SHALL BE GALVANIZED MALLEABLE IRON AND STRAPS SHALL BE 3/4" STAINLESS STEEL BAND.
- D. THE SERVICE POLE SHALL BE TREATED FULL LENGTH IN ACCORDANCE WITH AMERICAN WOOD PRESERVERS ASSOCIATION SPECIFICATIONS, TO BE AT LEAST 7.5 LBS. PER CUBIC FOOT RETENTION OF CREOSOTE OR 0.38 PENTACHLOROPHENOL MEASURED BY THE EMPTY CELL PROCESS. WOOD POLES SHALL COMPLY WITH THE LATEST REVISIONS OF ANSI STANDARD 05.1.
- E. ALL CONDUIT AND CONDUIT FITTINGS SHALL CONFORM TO SECTION 709 OF THE STANDARD SPECIFICATIONS.
- F. THE ENCLOSURE FOR THE CIRCUIT BREAKER SHALL BE A N.E.M.A. 3R RAIN TIGHT ENCLOSURE, AND SHALL BE LOCKED IN ACCORDANCE WITH THE POWER COMPANY REQUIREMENTS. THE BREAKERS SHALL BE SIZED FOR LOAD REQUIREMENTS.

**GENERAL NOTES**

- 1. SERVICE POLE: PRIMARY SERVICE SHALL BE FURNISHED TO A SERVICE POLE. THE INSTALLATION SHALL INCLUDE GROUND ROD, METER BASE, INSULATORS, CABLES, CONDUIT, SERVICE HEAD, SERVICE BRACKET, CIRCUIT BREAKERS, AND ALL OTHER ITEMS NECESSARY TO COMPLETE THE WORK. THE CONTRACTOR SHALL COORDINATE WITH THE POWER COMPANY TO GET THE CONNECTION AT THE PROPER TIME. THE EQUIPMENT, CONSTRUCTION AND INSTALLATION ON THE SERVICE POLE, AND SERVICE SHALL BE SUBJECT TO THE APPROVAL OF THE POWER COMPANY. THE COST OF MATERIALS AND INSTALLATION OF THE SERVICE POLE, AS DESCRIBED ABOVE, INCLUDING ANY PERMITS OR CHARGES BY THE POWER COMPANY FOR THE CONNECTION SHALL BE INCLUDED IN THE PRICE BID FOR OTHER ITEMS OF WORK.
- 2. ON PROJECTS WHERE SERVICE POLES ARE INSTALLED THE SERVICE POLE SHALL BE INSTALLED AS CLOSE TO THE RIGHT-OF-WAY AS POSSIBLE. LOCATION SHALL BE APPROVED BY THE ENGINEER PRIOR TO CONSTRUCTION.
- 3. INSTALL A CONDUIT COUPLING ADAPTOR, OR COMPRESSION COUPLING IF NECESSARY TO CONNECT CONDUITS OF DISSIMILAR MATERIALS.
- 4. THE PRIMARY WIRING SHALL BE PROVIDED BY THE LOCAL UTILITY CO., UNLESS OTHERWISE SPECIFIED.
- 5. THE CONTRACTOR SHALL INSTALL THE REQUIRED METERING EQUIPMENT FURNISHED BY THE LOCAL UTILITY CO., UNLESS OTHERWISE SPECIFIED.

TRANSFORMER PAD MATERIALS NEEDED	
0.75 C.Y.	CLASS A CONCRETE
36.81 S.F.	6"x6" WELDED WIRE
12.0 L.F.	4"x10.79 GALVANIZED STEEL PIPE POST

COST OF STEP DOWN TRANSFORMER AND PAD TO BE INCLUDED IN COST OF SERVICE POLE PER LOCATION (IF NEEDED).

SERVICE POLE DETAILS		
Drawn	JEK	7/16
Design	JEK	7/16
Checked	JS	7/16
MAINTENANCE/ITS GROUP JARED SCHWENNESEN		
STATE OF OKLAHOMA	DEPARTMENT OF TRANSPORTATION	
DIVISION 8	STATE JOB NO. 21899(04)	SHEET NO. ITS-16