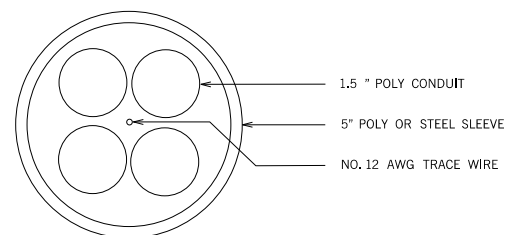
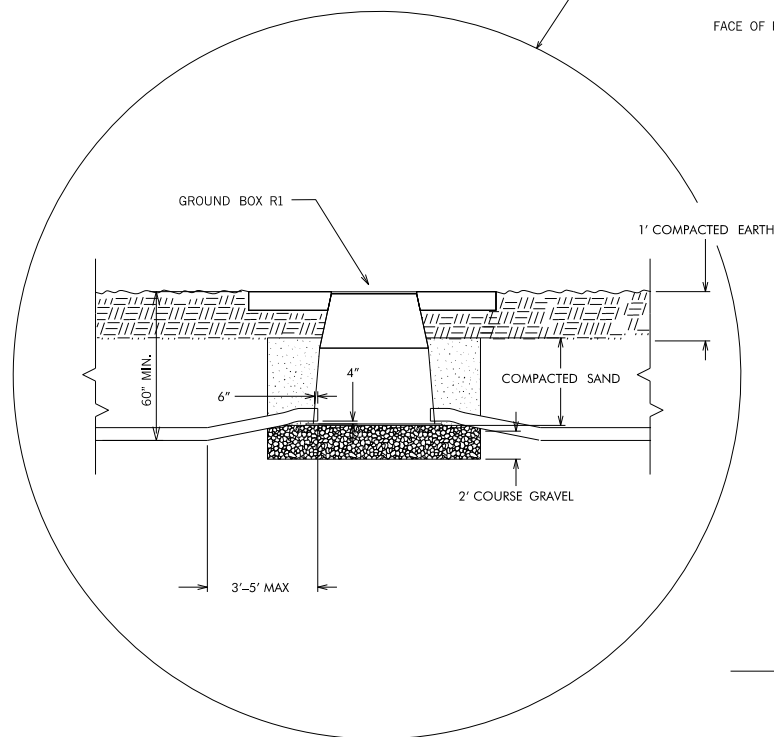


### CONDUIT CROSSING UNDER PAVEMENT



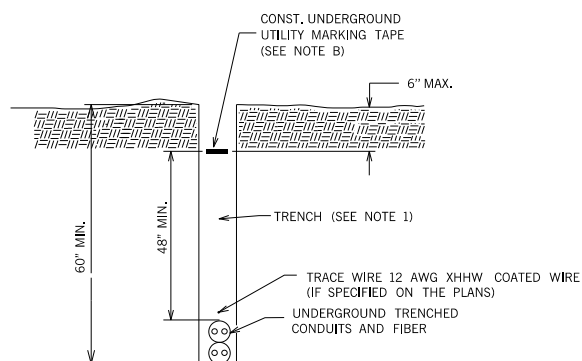
### TYPICAL SLEEVE CROSS SECTION

#### MATERIAL SPECIFICATIONS

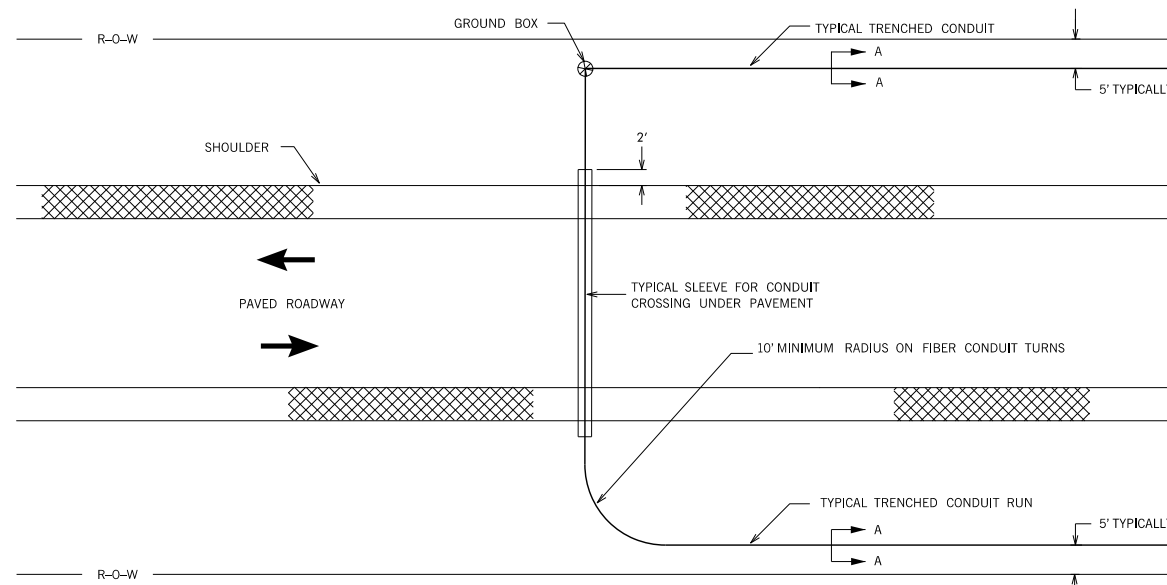
- MATERIAL FOR CABLE IN DUCT CONDUIT SHALL BE RIGID GALVANIZED STEEL OR SCHEDULE 40 PVC PLASTIC.
- THE UNDERGROUND UTILITY MARKING TAPE SHALL BE A MINIMUM OF 4 MIL THICKNESS, 6 INCHES WIDE, POLYETHYLENE TAPE, COLOR SHALL BE IN ACCORDANCE WITH AWWA UNIFORM COLOR CODE. TAPE USED TO MARK UNDERGROUND FIBER CABLE SHALL BE SAFETY RED COLOR WITH PRINTED LEGEND "CAUTION-FIBER LINE BURIED BELOW". THE TAPE SHALL BE SIMILAR TO REEF INDUSTRIES, INC STOCK NO. 0571415 OR APPROVED EQUAL. THE COST OF THE TAPE SHALL BE INCLUDED IN THE TRENCHING PAY ITEM.
- THE CONTRACTOR SHALL INSTALL A PULL LINE IN ALL CONDUITS BETWEEN GROUND BOXES, POLE FOOTINGS AND CABINETS. PULL LINE SHALL BE MULE TAPE BY NEPTCO, INC. OR APPROVED EQUAL. EQUIVILANT MULE TAPE WIRE, OR ANY OTHER APPROVED MATERIAL THAT HAS A MINIMUM BREAKING STRENGTH OF 600 LBS. THE CONTRACTOR SHALL BE RESPONSIBLE FOR SECURING THE PULL LINE AT EACH END OF CONDUIT AND ALSO FOR CAPPING THE CONDUIT ENDS TO PREVENT DEBRIS FROM PLUGGING THE CONDUIT. INSTALLATION, CAPPING, AND SECURING PROCEDURES SHALL BE APPROVED BY THE ENGINEER. THE COST OF ALL MATERIALS, LABOR AND INCIDENTALS NECESSARY TO COMPLETE THIS WORK SHALL BE INCLUDED IN THIS ITEM OF WORK.

#### GENERAL NOTES

- THE TRENCH SHALL BE BACK FILLED IN APPROXIMATELY 6 INCH LAYERS, AND TAMPED TO A 95% DENSITY OF THE SURROUNDING EARTH.
- THERE SHALL BE APPROXIMATELY 60 INCHES BETWEEN THE RIGHT-OF-WAY AND THE TRENCHED CONDUIT, UNLESS OTHERWISE SPECIFIED IN THE PLANS.
- ALL CONDUIT SHALL BE INSTALLED TO FIT THE EXISTING FIELD CONDITIONS. HOWEVER, IF MAJOR RELOCATIONS ARE NECESSARY THAT MAY AFFECT THE OVERALL DESIGN OF THE FIBER SYSTEM, THE CONTRACTOR SHALL RECEIVE APPROVAL OF THE ENGINEER PRIOR TO MAKING THE RELOCATIONS.
- IF TRENCHED CONDUIT MUST CROSS UNDER EXISTING GUARDRAIL IT SHOULD BE BETWEEN POSTS AND AS CLOSE TO PERPENDICULAR TO THE RAIL AS FEASIBLE.
- THERE SHALL BE NO MORE THAN FOUR (4) 90 DEGREE BENDS OR 360 DEGREES TOTAL OF ALL THE BENDS IN A SINGLE RUN OF CONDUIT.
- ALL TRENCHED CONDUIT SHALL BE FOR SECONDARY VOLTAGES, UNLESS OTHERWISE SPECIFIED IN THE PLANS.
- ALL BORED CONDUIT SHALL BE IN A PROTECTIVE SLEEVE.
- THE CONDUIT MUST BE INSTALLED TO FIT EXISTING CONDITIONS AND ALL DISTURBED AREAS MUST BE REPAIRED OR RESTORED TO ORIGINAL CONDITION BY THE CONTRACTOR. THERE WILL BE NO PAY ITEM FOR THIS WORK.
- WHEN CONDUIT IS INSTALLED FOR FUTURE USE, ALL ENDS SHALL BE CAPPED WATER TIGHT.



### SECTION "A-A"



### CONDUIT DETAILS

<b>POLY CONDUIT INSTALLATION DETAIL</b>			Drawn	JEK	7/16
			Design	JEK	7/16
STATE OF OKLAHOMA			Checked	JD	7/16
			DEPARTMENT OF TRANSPORTATION		
DIVISION 8			STATE JOB NO. 21899(04)		
TULSA & ROGERS COUNTIES			SHEET NO. ITS-15		