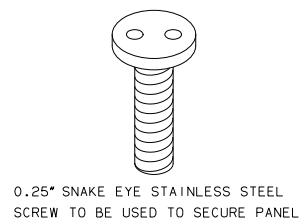
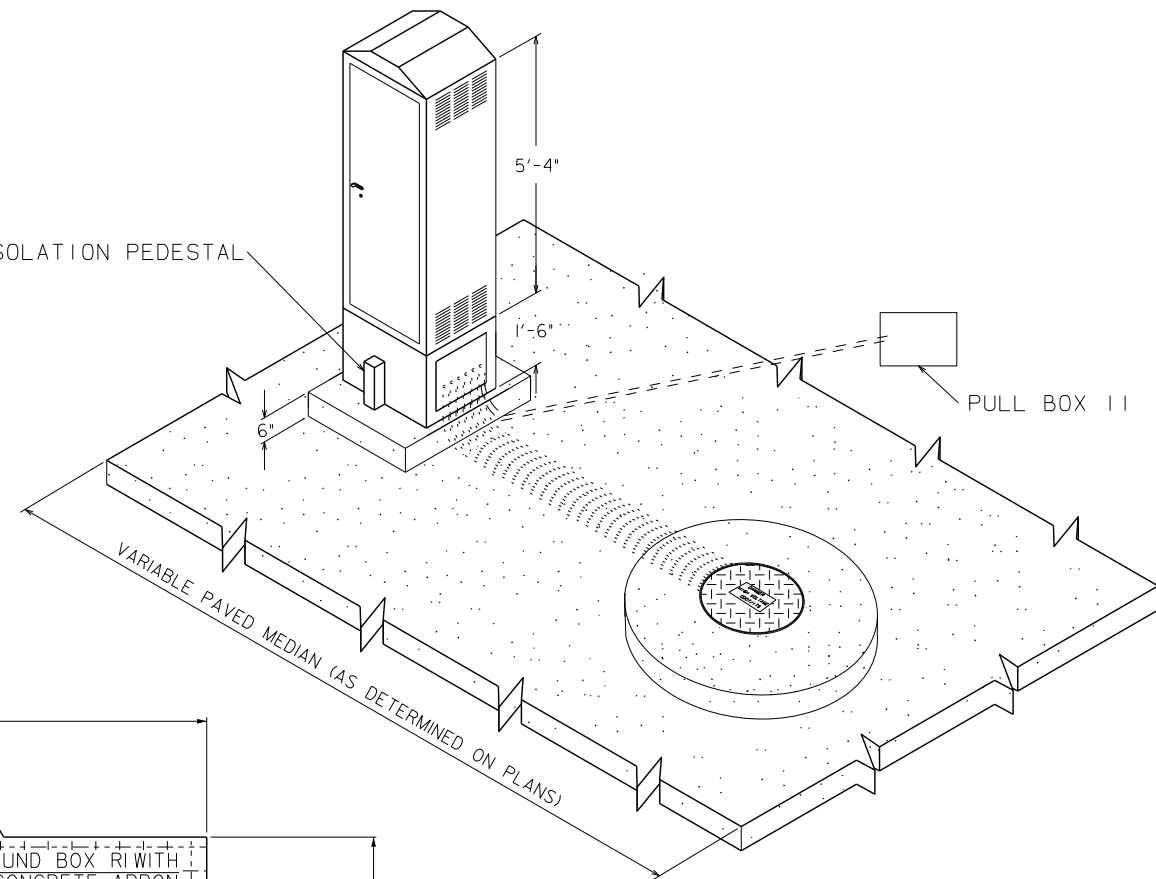


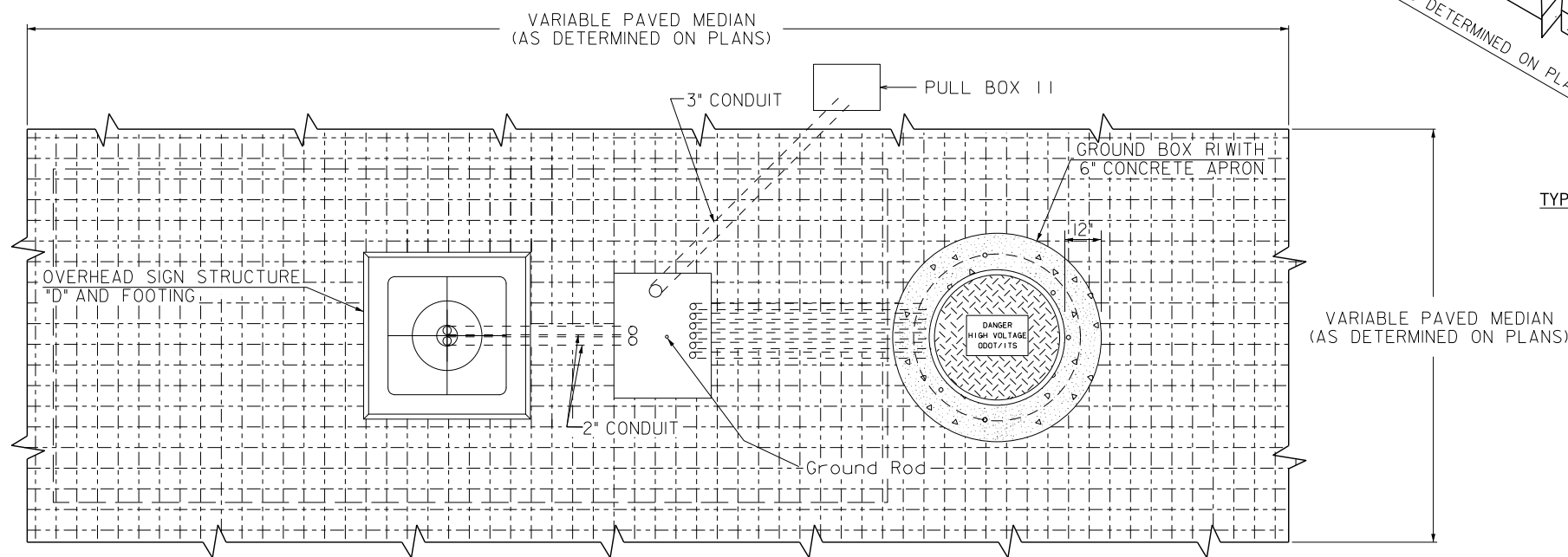
18" RISERSPACER WITH ACCESS PANEL



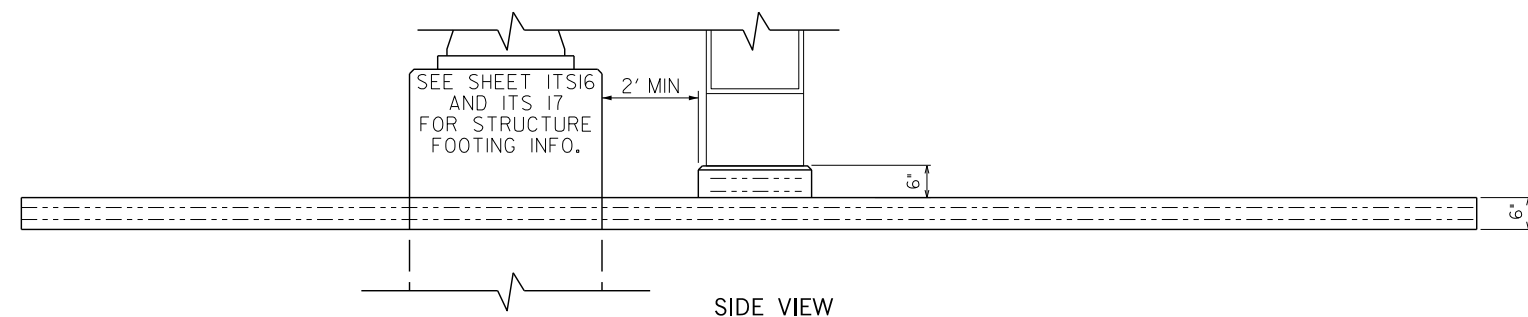
△ ISOLATION PEDESTAL



TYPICAL FOUNDATION MOUNTED CONTROLLER CABINET



TOP VIEW



SIDE VIEW

MATERIAL SPECIFICATIONS & GENERAL NOTES

- A. MATERIALS REQUIRED FOR THE CONTROLLER CABINET FOUNDATION, AND ALL PERTINENT EQUIPMENT AND ASSEMBLY SHALL BE INCLUDED IN THE PRICE BID FOR THE CONTROLLER.
- B. THE CONTROLLER CABINET FOUNDATION SHALL BE CLASS "A" CONCRETE.
- C. A MINIMUM OF 4 EXPANSION BOLTS ARE REQUIRED, 1/2" x 4 1/2" STAINLESS STEEL KWIK BOLT WITH A MIN. EMBEDMENT OF 3 1/2", SHALL BE USED TO MOUNT THE CONTROLLER CABINET TO THE CONCRETE PAD.
- D. THE CONTROLLER CABINET SHALL BE INSTALLED ON TOP OF SILICANT RUBBER CAULKING COMPOUND FOR WEATHERPROOFING OF THE CABINET.
- △ E. 1/C NO. 0 AWG ELECTRICAL CONDUCTOR SHALL BE USED TO SUPPLY POWER FROM THE POWER SOURCE(S) TO THE CONTROLLER.
- F. 1/C NO. 12 AWG SOLID BARE COPPER WIRE SHALL BE USED TO GROUND THE CONTROLLER CABINET TO THE GROUND ROD.
- G. TYPICAL \*332\* CABINET SHALL INCLUDE THE FOLLOWING:  
 APPROXIMATE SIZE = 24"W x 30"D x 64"H  
 ONE 18" EXTENSION BASE/RISER  
 TWO FULL SIZE LOCKING DOORS WITH DOOR STOPS  
 DOOR ALARMS ON BOTH DOORS  
 THERMOSTATICALLY CONTROLLED ELECTRIC COOLING FAN(S)  
 POWER DISTRIBUTION ASSEMBLY WITH RECEPTALS (MINIMUM OF SIX 110 V OUTLETS)  
 TWO FLUORESCENT LIGHTS WITH ON/OFF SWITCH (FRONT & BACK)  
 19" SELF STANDING EIA RACK MOUNTING SYSTEM (FRONT & BACK)  
 ONE DRAWER ASSEMBLY (3" DEEP)  
 THREE SHELF ASSEMBLIES, WILL BE PROVIDED BY ODOT △
- H. SIX (6) 1.5" POLY CONDUITS SHOULD EXTEND BETWEEN GROUND BOX AND COMMUNICATION CABINET.

Drawn	JEK	7/16
Design	JEK	7/16
Checked	JS	7/16
MAINTENANCE / ITS GROUP JARED SCHWENNESEN		
STATE OF OKLAHOMA	DEPARTMENT OF TRANSPORTATION	
DIVISION 8	STATE JOB NO. 21899(04)	SHEET NO. ITS-14

332 COMMUNICATION CABINET DETAIL