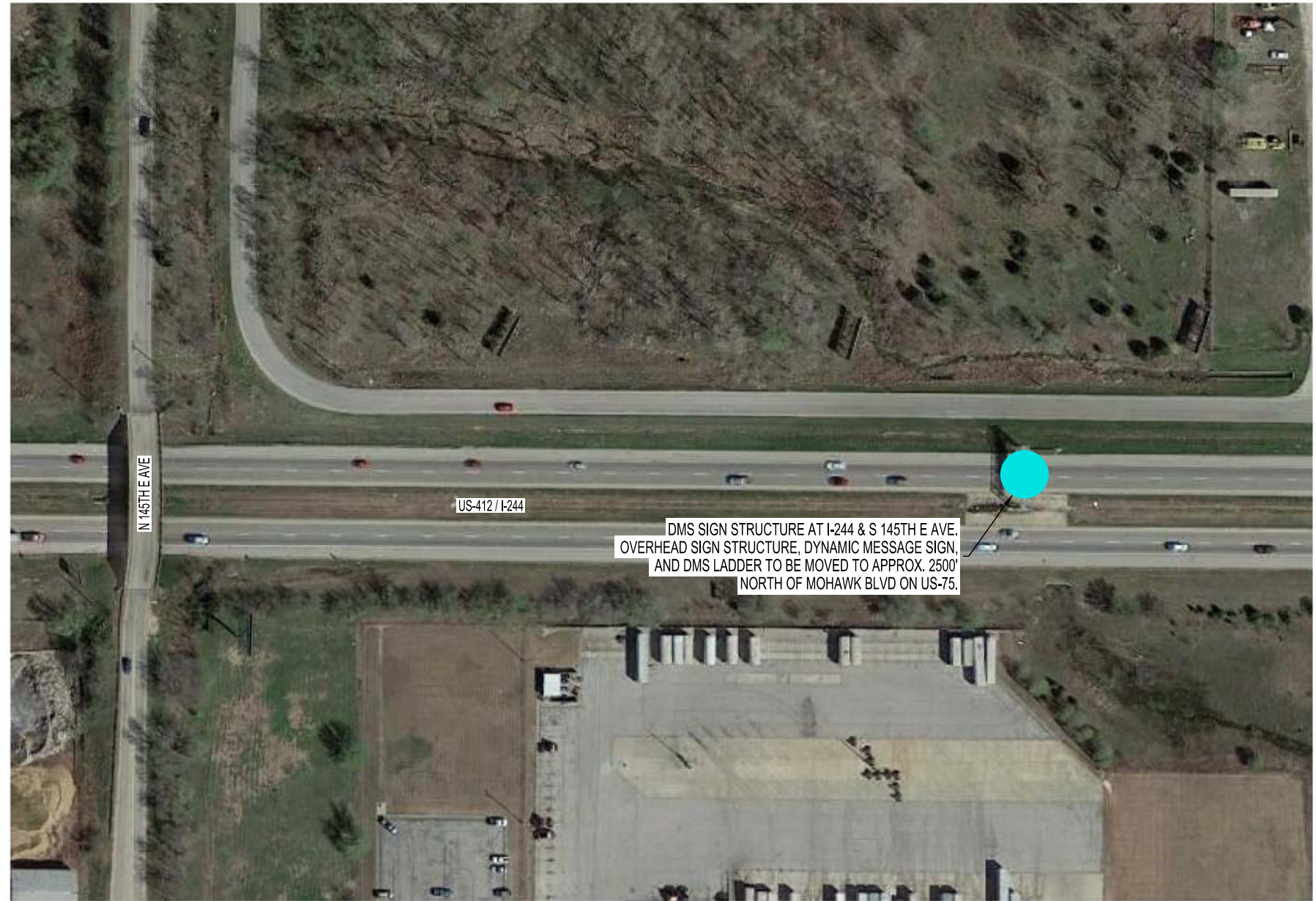


PROPOSED LOCATION FOR RELOCATED DMS SIGN STRUCTURE. SIGN STRUCTURE FROM I-244 & 145TH E AVE TO BE MOVED TO THIS LOCATION AND PLACED OVER SB US-75.



DMS SIGN STRUCTURE AT I-244 & S 145TH E AVE. OVERHEAD SIGN STRUCTURE, DYNAMIC MESSAGE SIGN, AND DMS LADDER TO BE MOVED TO APPROX. 2500' NORTH OF MOHAWK BLVD ON US-75.

DESIGN	JEK	5/16
DRAWN	JEK	5/16
CHECKED	JDS	5/16
MAINTENANCE DIV. JARED SCHWENNESEN		

OKLAHOMA DEPARTMENT OF TRANSPORTATION
MAINTENANCE DIVISION - I.T.S. BRANCH
ITS SITE OVERVIEW
US-75 & MOHAWK BLVD CONST
& I-244 & 145TH REMOVAL
STATE JOB NO. 21899(04) SHEET NO. ITS-08
DIVISION 8 TULSA & ROGERS COUNTIES

