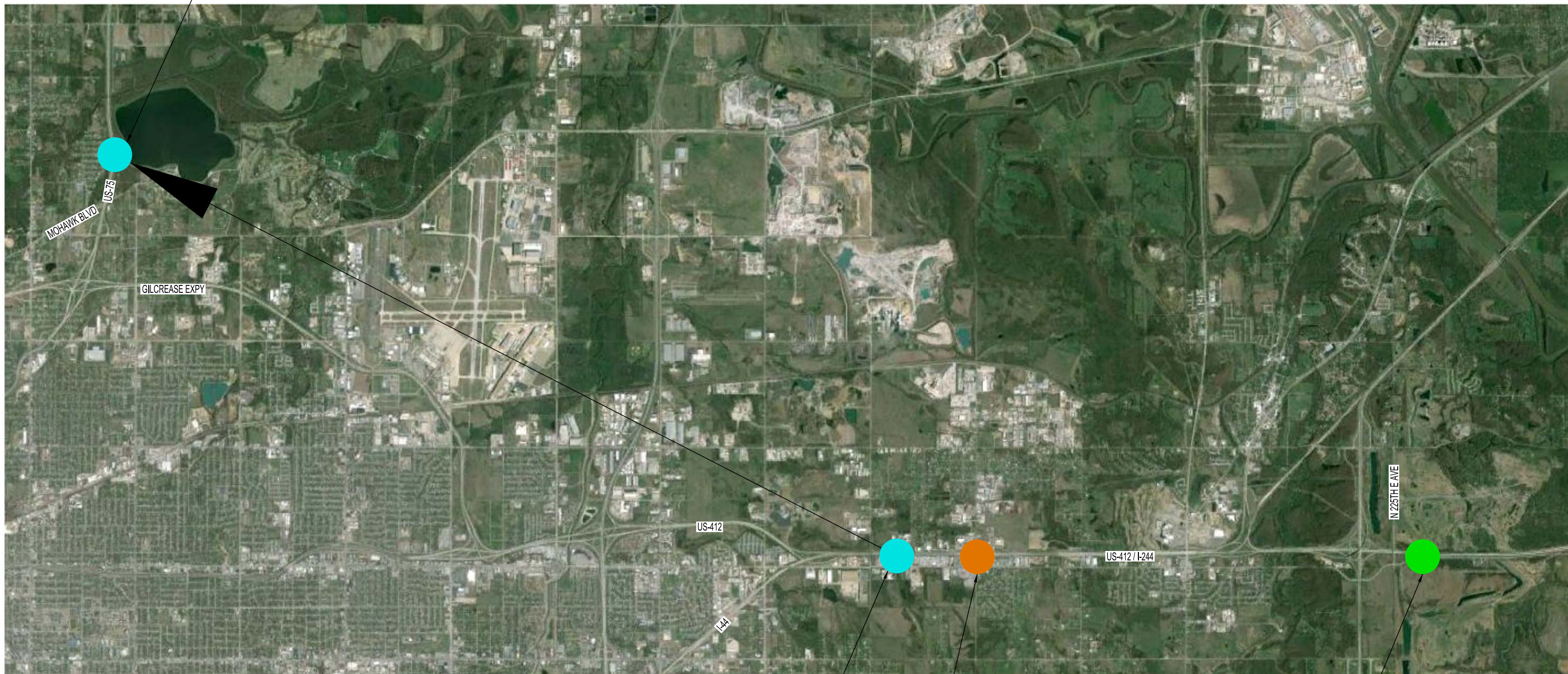


DMS SIGN STRUCTURE FROM I-244 & S 145TH E AVE.
OVERHEAD SIGN STRUCTURE, DYNAMIC MESSAGE SIGN,
AND DMS LADDER TO BE MOVED TO THIS LOCATION
APPROX. 2500' NORTH OF MOHAWK BLVD ON SB US-75.



DMS SIGN STRUCTURE AT I-244 & S 145TH E AVE.
OVERHEAD SIGN STRUCTURE, DYNAMIC MESSAGE SIGN,
AND DMS LADDER TO BE MOVED TO APPROX. 2500'
NORTH OF MOHAWK BLVD ON SB US-75.

I-244 & S 165TH E AVE CONSTRUCT NEW DUAL SIDED DMS
STRUCTURE, NEW DYNAMIC MESSAGE SIGN LOCATION.
(STRUCTURE TO BE MOUNTED IN NEW MEDIAN BARRIER)

CONSTRUCT NEW DUAL SIDED DMS STRUCTURE,
NEW DYNAMIC MESSAGE SIGN LOCATION APPROX.
2000' EAST OF N 225TH E AVE BRIDGE



DESIGN	JEK	5/16	OKLAHOMA DEPARTMENT OF TRANSPORTATION MAINTENANCE DIVISION - I.T.S. BRANCH
DRAWN	JEK	5/16	
CHECKED	JDS	5/16	
MAINTENANCE DIV. JARED SCHWENNESEN			ITS SITE OVERVIEW
			STATE JOB NO. 21899(04) SHEET NO. ITS-05