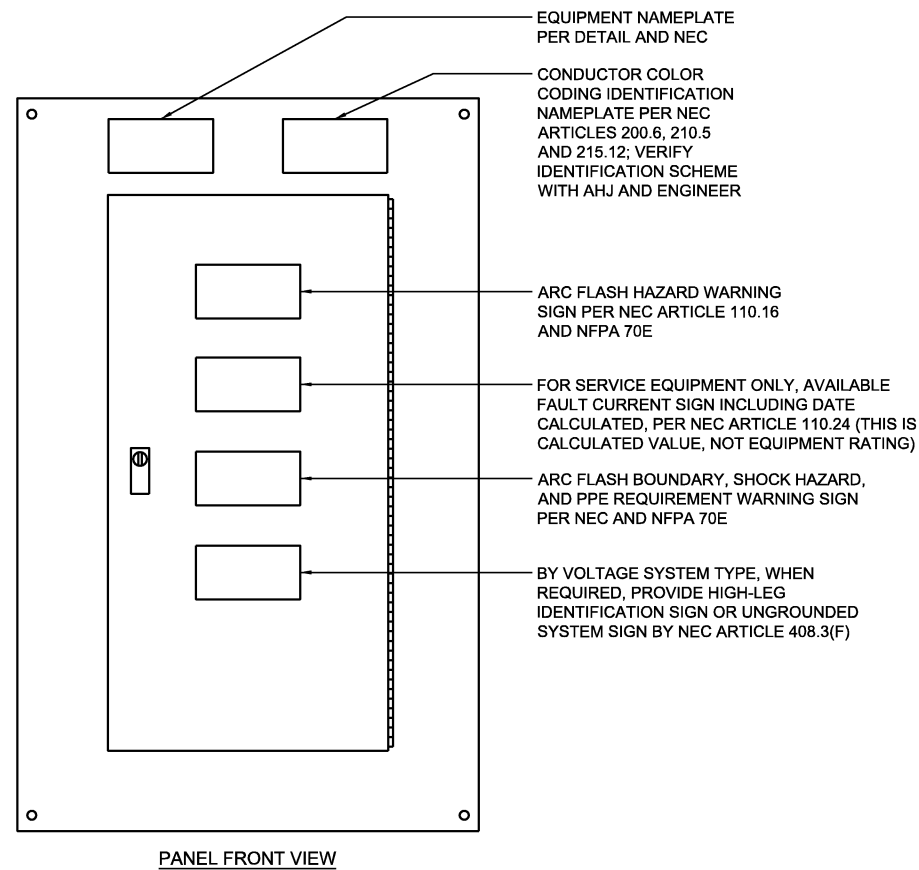


FED. ROAD DIST. NO.	STATE	JOB PIECE NO.	FISCAL YEAR	SHEET NO.	TOTAL SHEETS
6	OKLA.	21899(04)			
DESCRIPTION			REVISIONS	DATE	

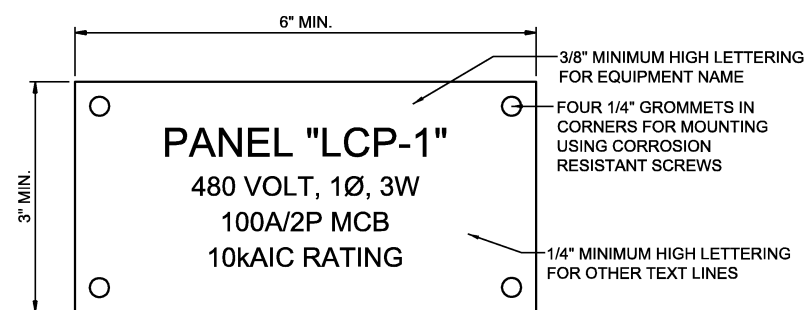
NOTES:

1. ALL BOLTS, NUTS, WASHERS, ANCHORS, PLATES, AND OTHER MOUNTING STEMS SHALL BE CORROSION RESISTANT, STAINLESS STEEL.
2. UTILIZE 5/16" STAINLESS STEEL WEDGE ANCHORS AS REQUIRED.
3. BOND ELECTRICAL EQUIPMENT SUPPORT FRAME TO COUNTERPOISE AND GROUND RINGS USING #2 AWG MINIMUM AND EXOTHERMIC WELDS UNLESS NOTED OTHERWISE.



GENERAL NOTE:

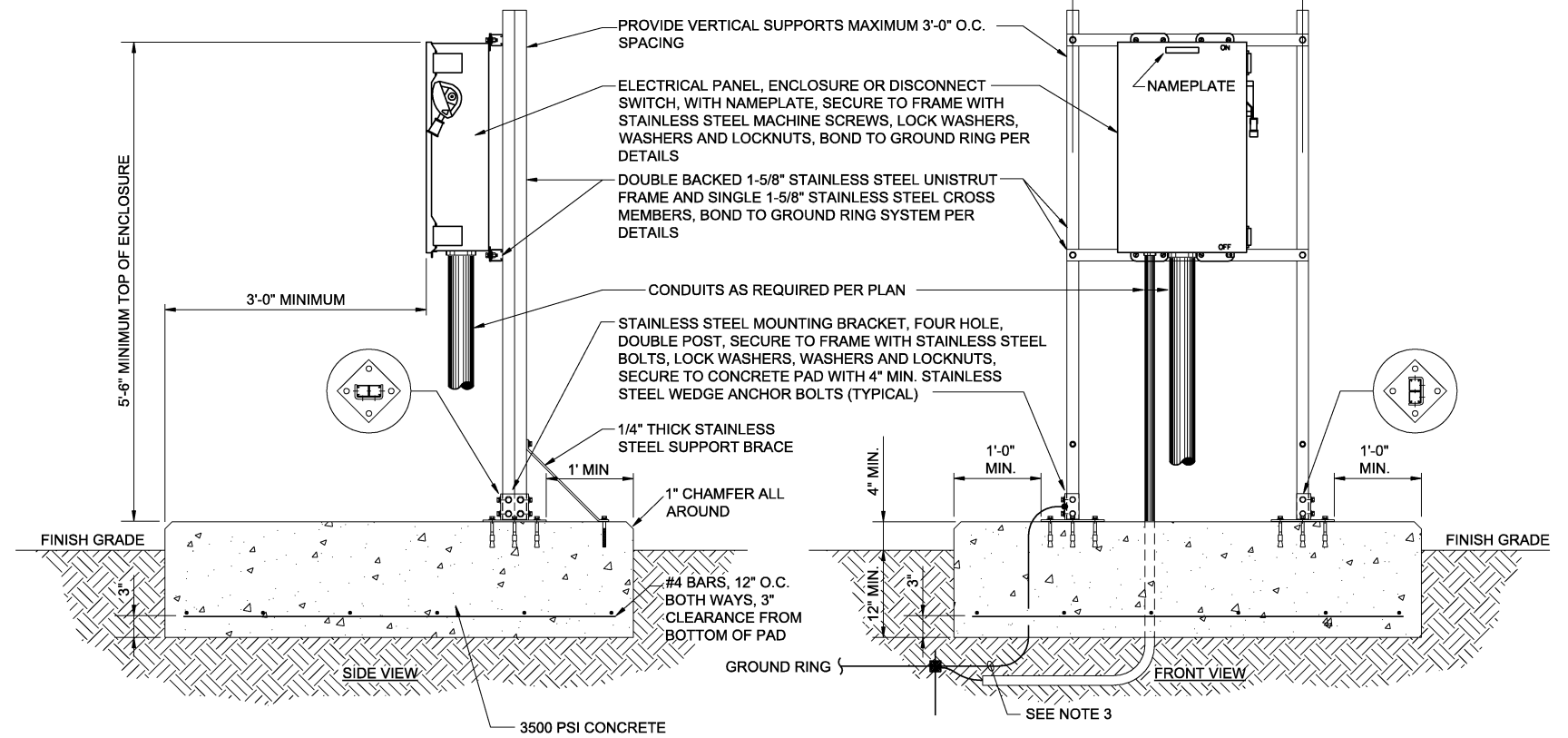
1. INSTALL ALL NAMEPLATES AND WARNING SIGNS IN ACCORDANCE WITH NEC AND NFPA 70E REQUIREMENTS.
2. INSTALL NAMEPLATES AND WARNING SIGNS ON ALL ELECTRICAL EQUIPMENT, INCLUDING BUT NOT LIMITED TO, SWITCHBOARDS, PANELBOARDS, TRANSFORMERS, SWITCHES, CONTROL PANELS AND MOTOR CONTROL CENTERS.
3. EXTERIOR EQUIPMENT SHALL HAVE WEATHER-RESISTANT, NON-FADING NAMEPLATES AND SIGNAGE.
4. REFER TO SPECIFICATIONS FOR ADDITIONAL NAMEPLATE AND SIGNAGE REQUIREMENTS.



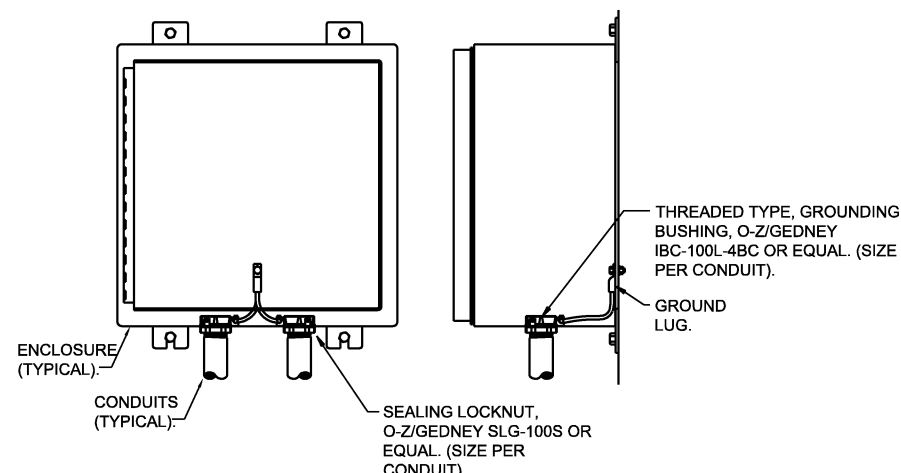
EQUIPMENT NAMEPLATE NOTES:

1. INSTALL 2-PLEX ACRYLIC, WHITE ON BLACK CORE, MULTIPLE LINES TEXT, CUSTOM ENGRAVED NAME PLATES.
2. MOUNT WITH STAINLESS STEEL SCREWS.
3. SEAL SCREW HOLES WITH SILICONE RUBBER.
4. NAMEPLATE INFORMATION SHALL INCLUDE:
 - A. IDENTIFICATION NAME
 - B. VOLTAGE SYSTEM
 - C. AMPACITY RATING AND TYPE
 - D. EQUIPMENT AIC RATING
 - E. FEEDER DESCRIPTION

TYPICAL ENGRAVED NAMEPLATE AND SIGNAGE DETAIL



TYPICAL EQUIPMENT RACK MOUNTING DETAILS



NOTES:

1. ALL SERVICE, FEEDER, AND BRANCH CIRCUIT CONDUITS SHALL BE GROUNDED ON BOTH ENDS.

CONDUIT GROUNDING DETAIL



GENERAL NOTES:

1. POWER MARKING TAPES SHALL BE DETECTABLE TYPE CONSTRUCTION WITH RED BACKGROUND AND BLACK LETTERING.
2. COMMUNICATION MARKING TAPES SHALL BE DETECTABLE TYPE CONSTRUCTION WITH ORANGE BACKGROUND AND BLACK LETTERING, "TELEPHONE LINE" OR "FIBER OPTIC LINE" RESPECTIVELY.
3. TAPE SHALL BE DETECTABLE, DURABLE, HIGHLY VISIBLE, RESISTANT TO ELEMENTS, MEETING AND/OR EXCEEDING ALL INDUSTRY STANDARDS.
4. PROVIDE MULTIPLE AND/OR WIDER TAPES FOR WIDER DUCT BANKS. COORDINATE WITH ENGINEER.

UNDERGROUND DETECTABLE WARNING TAPE

DESIGN	SFF	2/15	TULSA & ROGERS COUNTIES
DRAWN	SFF	2/15	
CHECKED	SFF	2/15	
APPROVED			
SQUAD	GARVER	STATE JOB NO. 21899(04)	SHEET NO. 226

LIGHTING DETAILS (SHEET 1 OF 3)