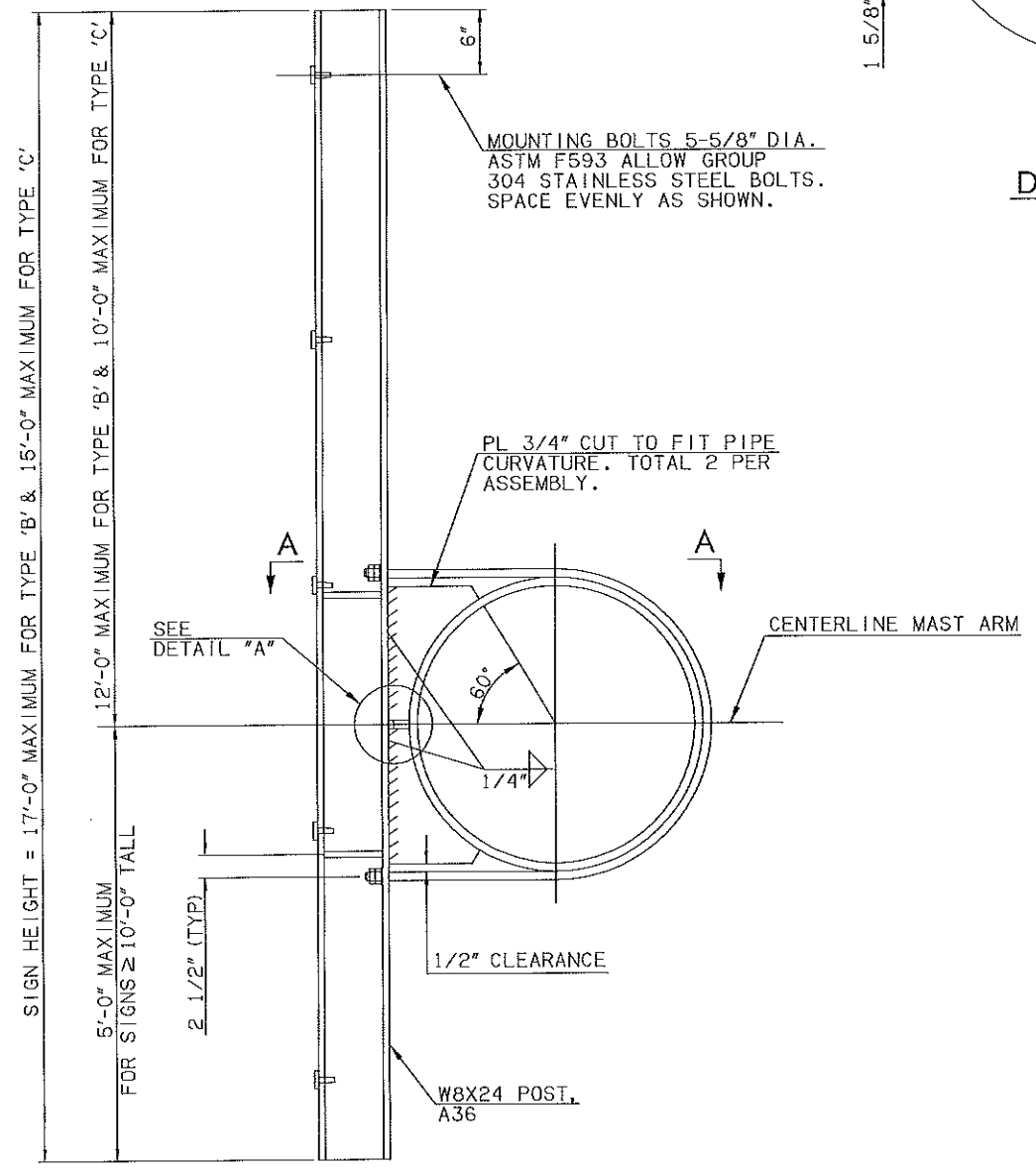
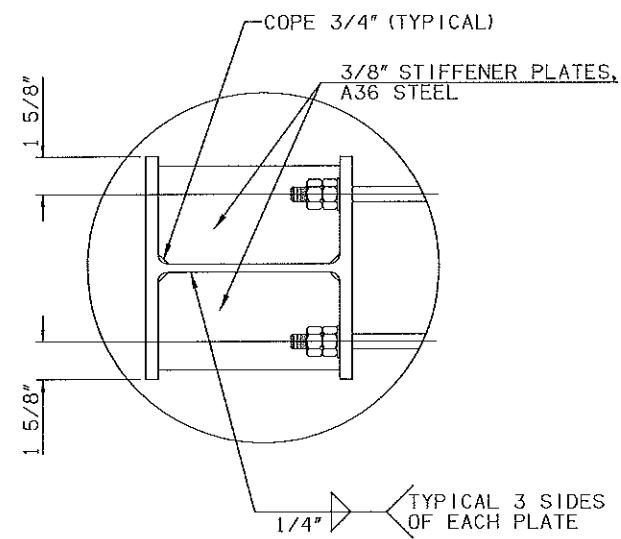


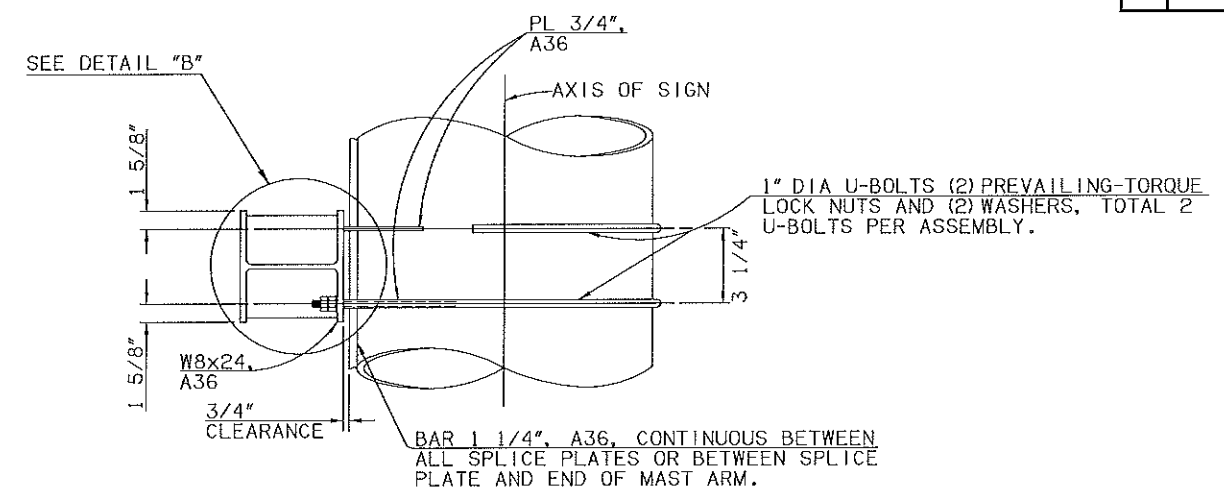
REV. NO.	DESCRIPTION	REVISIONS	DATE



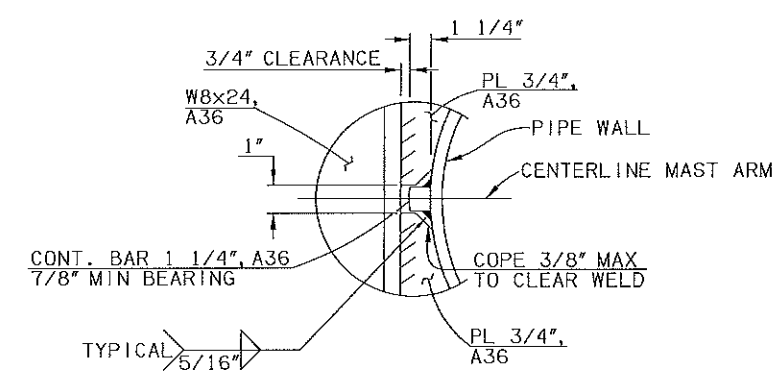
SIGN MOUNTING BRACKET



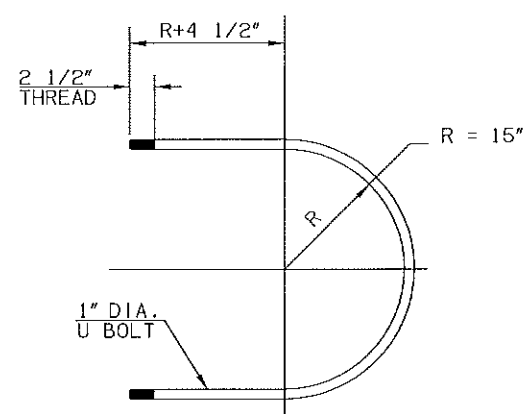
DETAIL 'B'



VIEW A-A



DETAIL 'A'



U BOLT DETAIL

GENERAL NOTES

- ALL U-BOLTS SHALL CONFORM TO THE MATERIAL SPECIFICATIONS OF ASTM A193-B7, AND THREADS SHALL CONFORM TO ASTM A325 SECTION 7.2. ALL U-BOLT NUTS SHALL BE PREVAILING-TORQUE LOCK NUTS AND SHALL CONFORM TO THE SPECIFICATION OF ASTM A194-2H. ALL WASHERS SHALL CONFORM TO THE SPECIFICATIONS OF ASTM F436.

<b>MONOTUBE STRUCTURE (OVERHEAD SIGN BRACKET DETAIL)</b>			
Design	JG	JW	
Detail	JG	JW	
Check	JG	JW	
Supd.	SUPERVISOR		
Eng.	ENGINEER		
<b>STATE OF OKLAHOMA</b>		<b>DEPARTMENT OF TRANSPORTATION</b>	
JOB FILE NO. 21899(04)		SHEET NO. M-1	