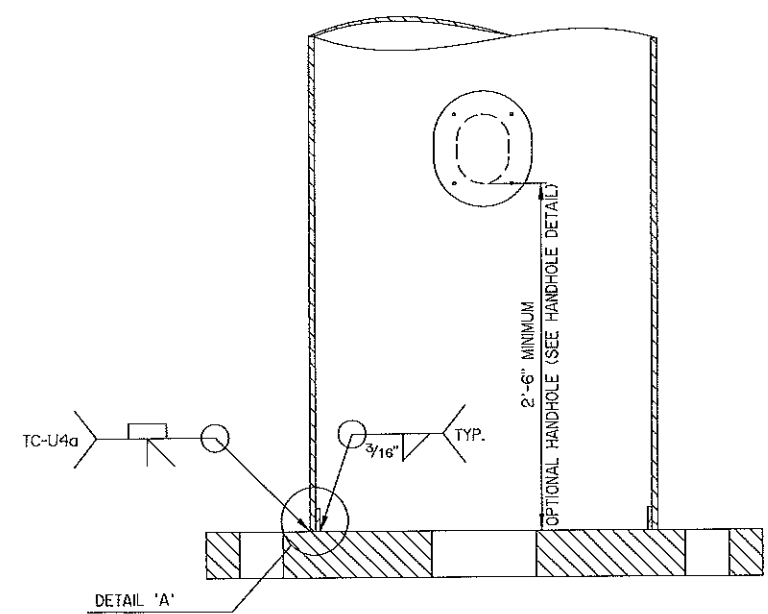
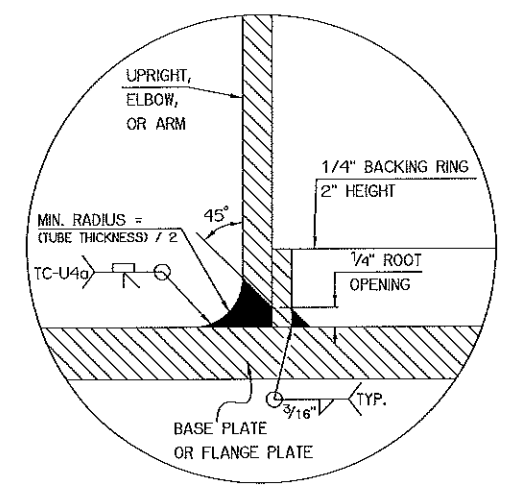


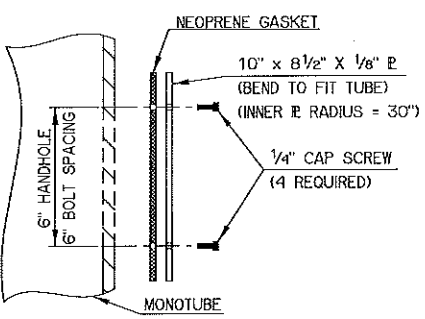
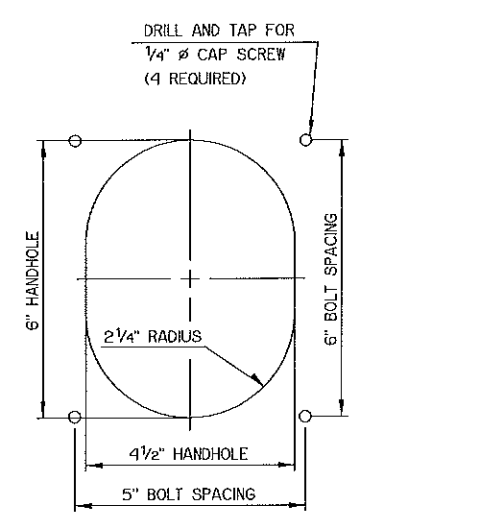
REV. NO.	DESCRIPTION	REVISIONS	DATE



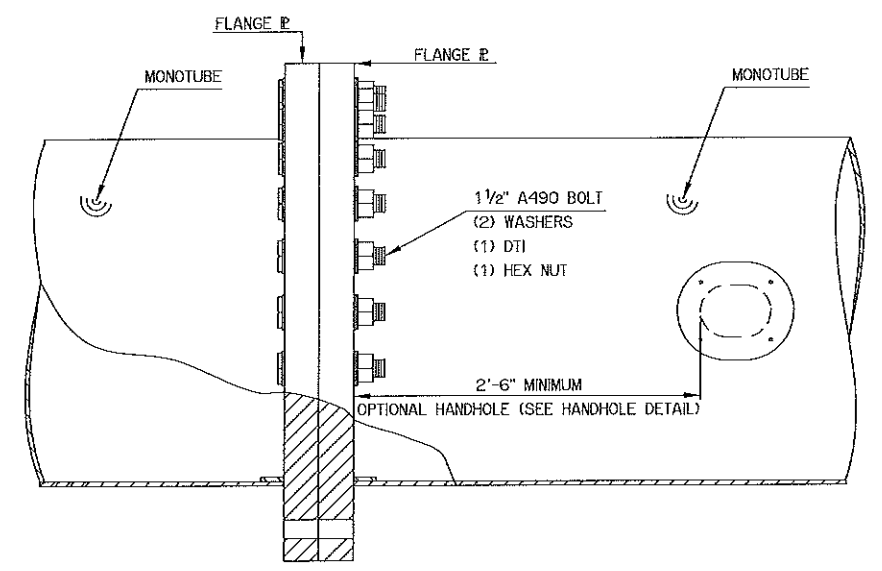
**TUBE-TO-TRANSVERSE-PLATE DETAIL (TYPICAL)**  
(DETAIL TYPICAL FOR BASE AND FLANGE PLATES)



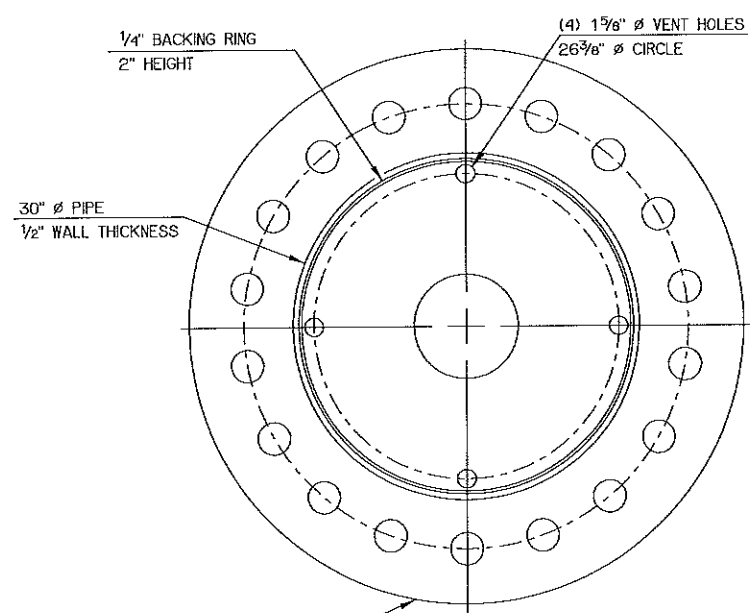
**DETAIL 'A'**



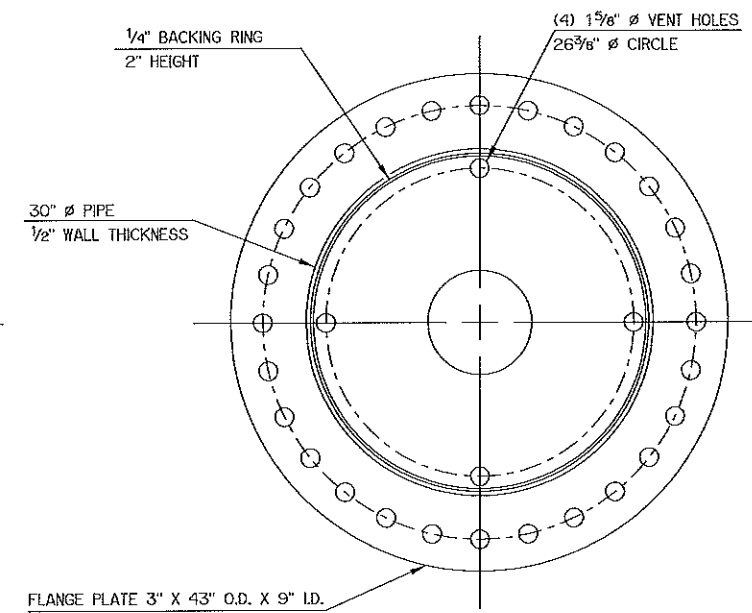
**HANDHOLE DETAIL**  
(OPTIONAL)



**TYPICAL FLANGE CONNECTION DETAIL**  
NOTE: OPTIONAL HANDHOLES FOR TYPE 'C' STRUCTURES SHOULD BE POSITIONED ON THE DOWN TRAFFIC FACE OF THE TUBE.



**BASE PLATE**  
BASE PLATE 4" X 48" O.D. X 9" I.D.  
(18) 2 13/16"  $\phi$  BOLT HOLES  
BOLT CIRCLE 38 1/2"  $\phi$   
2 1/2" F1554 GR.55 ANCHOR BOLTS



**FLANGE PLATE**  
FLANGE PLATE 3" X 43" O.D. X 9" I.D.  
(28) 1 5/8"  $\phi$  BOLT HOLES  
BOLT CIRCLE 37 1/2"  $\phi$   
1 1/2" A490 BOLTS

<b>MONOTUBE STRUCTURE (TYPE 'C' DETAILS)</b>		Design	JG	JW
		Detail	JG	JW
<b>STATE OF OKLAHOMA</b>		Check	JG	JW
		Squad#	SUPERVISOR	
DEPARTMENT OF TRANSPORTATION		Eng.	ENGINEER	
		JOB PRICE NO.	21899(04)	
SHEET NO. M.3		DATE		