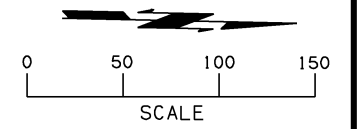
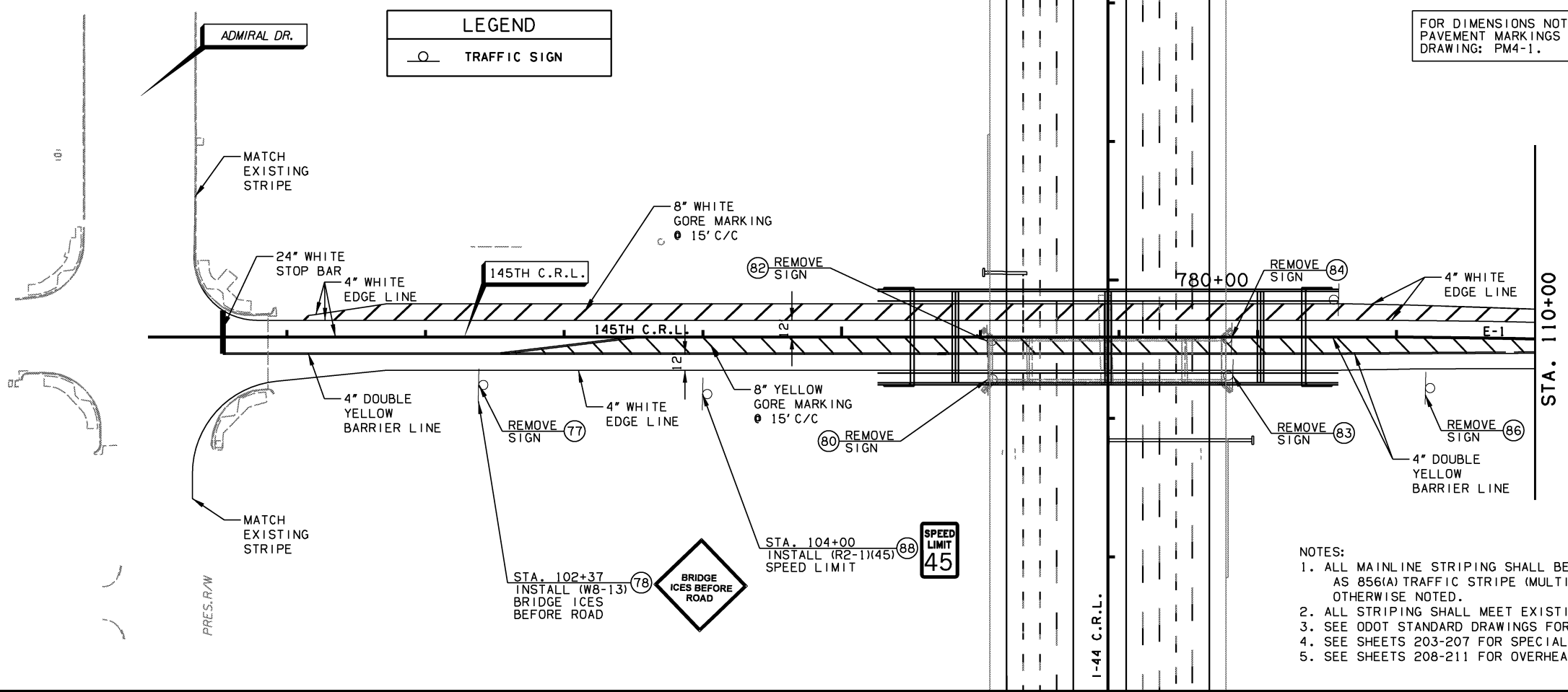


OKLAHOMA DEPARTMENT OF TRANSPORTATION					
FED. ROAD DIST. NO.	STATE	JOB PIECE NO.	FISCAL YEAR	SHEET NO.	TOTAL SHEETS
6	OKLA.	21899(04)			
DESCRIPTION			REVISIONS	DATE	

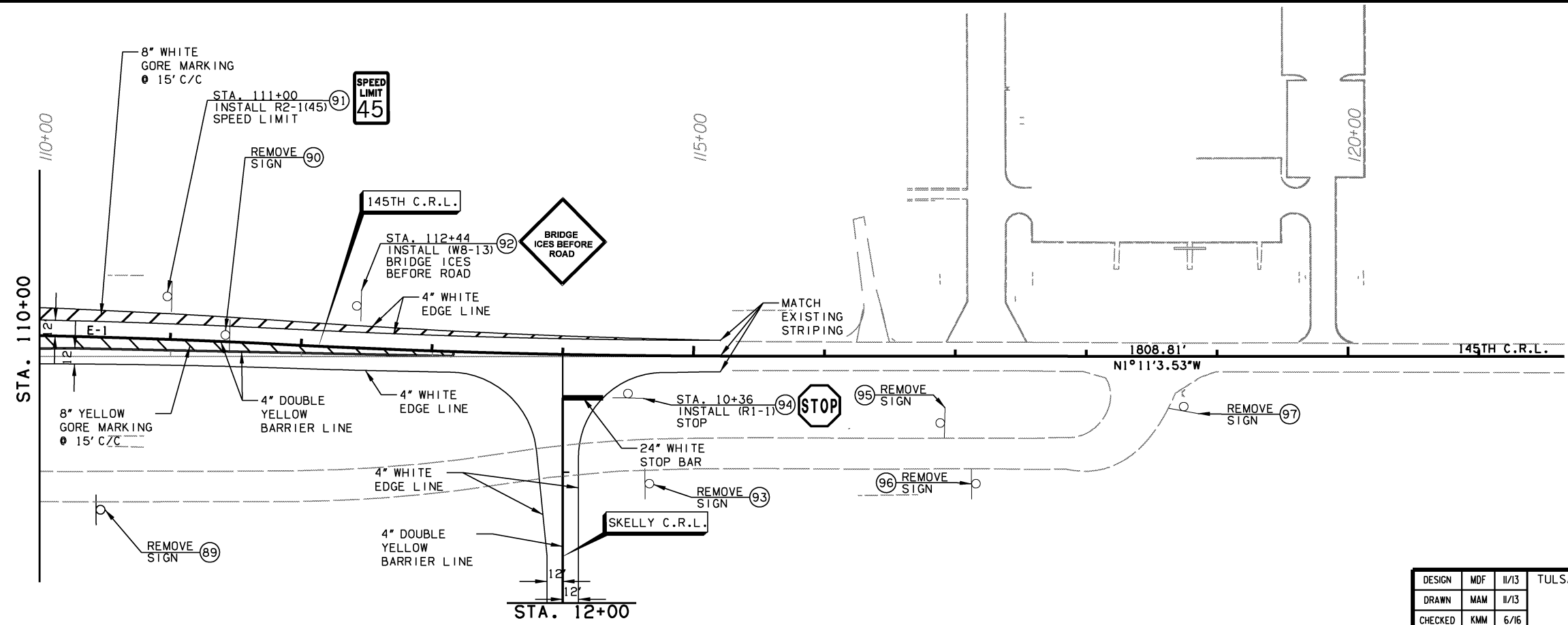
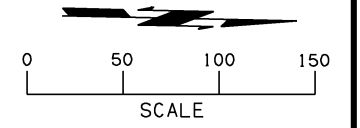


FOR DIMENSIONS NOT SHOWN ON THE PLANS FOR PAVEMENT MARKINGS SEE O.D.O.T. STANDARD DRAWING: PM4-1.

LEGEND	
	TRAFFIC SIGN



- NOTES:
1. ALL MAINLINE STRIPING SHALL BE THE APPROPRIATE COLOR WITH SHADOW STRIPING TO BE PAID FOR AS 856(A) TRAFFIC STRIPE (MULTIPOLYMER). ALL STRIPING SHALL BE MULTIPOLYMER UNLESS OTHERWISE NOTED.
  2. ALL STRIPING SHALL MEET EXISTING STRIPING AT PROJECT TERMINAL POINTS.
  3. SEE ODOT STANDARD DRAWINGS FOR ADDITIONAL DETAILS.
  4. SEE SHEETS 203-207 FOR SPECIAL SIGN DETAILS.
  5. SEE SHEETS 208-211 FOR OVERHEAD SIGN STRUCTURE DETAILS.



DESIGN	MDF	11/13	TULSA & ROGERS COUNTIES
DRAWN	MAM	11/13	PAVEMENT MARKING AND SIGNING PLANS (SHEET 6 OF 6)
CHECKED	KMM	6/16	
APPROVED			
SQUAD	<b>GARVER</b>	STATE JOB NO. 21899(04)	SHEET NO. 202