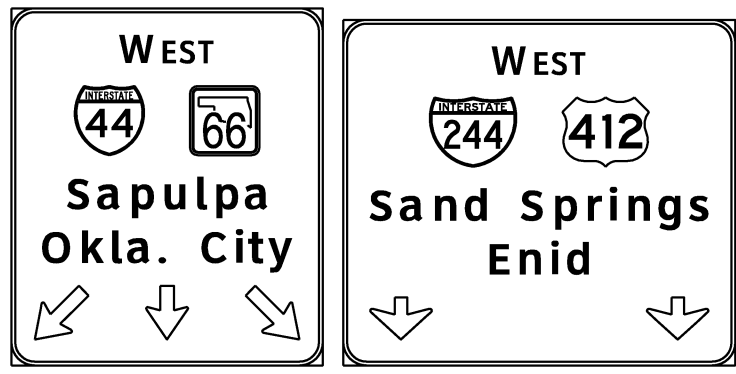
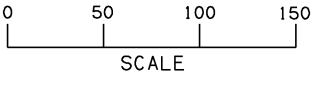


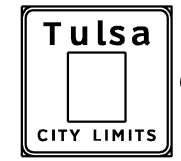
LEGEND	
	TRAFFIC SIGN

FOR DIMENSIONS NOT SHOWN ON THE PLANS FOR PAVEMENT MARKINGS SEE O.D.O.T. STANDARD DRAWING: PM4-1.

OKLAHOMA DEPARTMENT OF TRANSPORTATION					
FED. ROAD DIST. NO.	STATE	JOB PIECE NO.	FISCAL YEAR	SHEET NO.	TOTAL SHEETS
6	OKLA.	21899(04)			
DESCRIPTION			REVISIONS		DATE



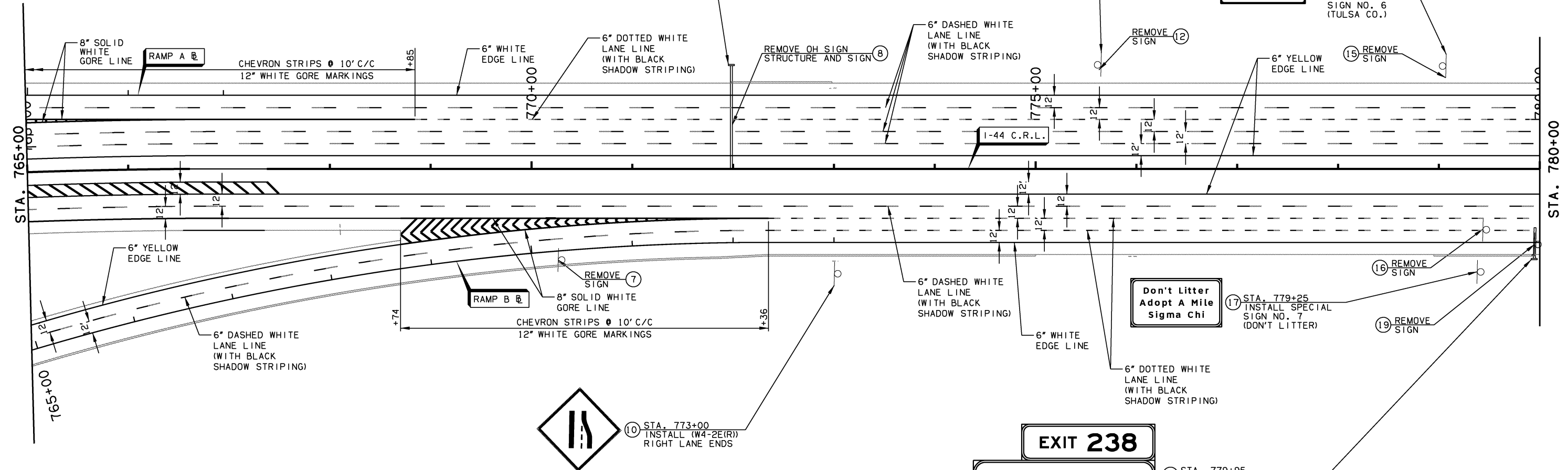
9 STA. 771+98
INSTALL OH SIGN STRUCTURE W/ SPECIAL SIGN NO. 3 (SAPULPA/OKLA. CITY) SPECIAL SIGN NO. 4 (SAND SPRINGS/ENID)



13 STA. 775+62
INSTALL SPECIAL SIGN NO. 5 (TULSA CITY LIMITS)



14 STA. 779+00
INSTALL SPECIAL SIGN NO. 6 (TULSA CO.)



10 STA. 773+00
INSTALL (W4-2E(R)) RIGHT LANE ENDS



18 STA. 779+95
INSTALL OH SIGN STRUCTURE W/ SPECIAL SIGN NO. 8 (161ST E AVE 1 MI)

- NOTES:
- ALL MAINLINE STRIPING SHALL BE THE APPROPRIATE COLOR WITH SHADOW STRIPING TO BE PAID FOR AS 856(A) TRAFFIC STRIPE (MULTIPOLYMER). ALL STRIPING SHALL BE MULTIPOLYMER UNLESS OTHERWISE NOTED.
 - ALL STRIPING SHALL MEET EXISTING STRIPING AT PROJECT TERMINAL POINTS.
 - SEE ODOT STANDARD DRAWINGS FOR ADDITIONAL DETAILS.
 - SEE SHEETS 203-207 FOR SPECIAL SIGN DETAILS.
 - SEE SHEETS 208-211 FOR OVERHEAD SIGN STRUCTURE DETAILS.

DESIGN	MDF	11/13	TULSA & ROGERS COUNTIES
DRAWN	MAM	11/13	PAVEMENT MARKING AND SIGNING PLANS (SHEET 2 OF 6)
CHECKED	KMM	6/16	
APPROVED			
SQUAD	GARVER	STATE JOB NO. 21899(04)	SHEET NO. 198