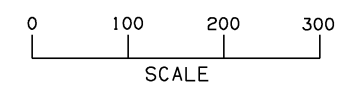
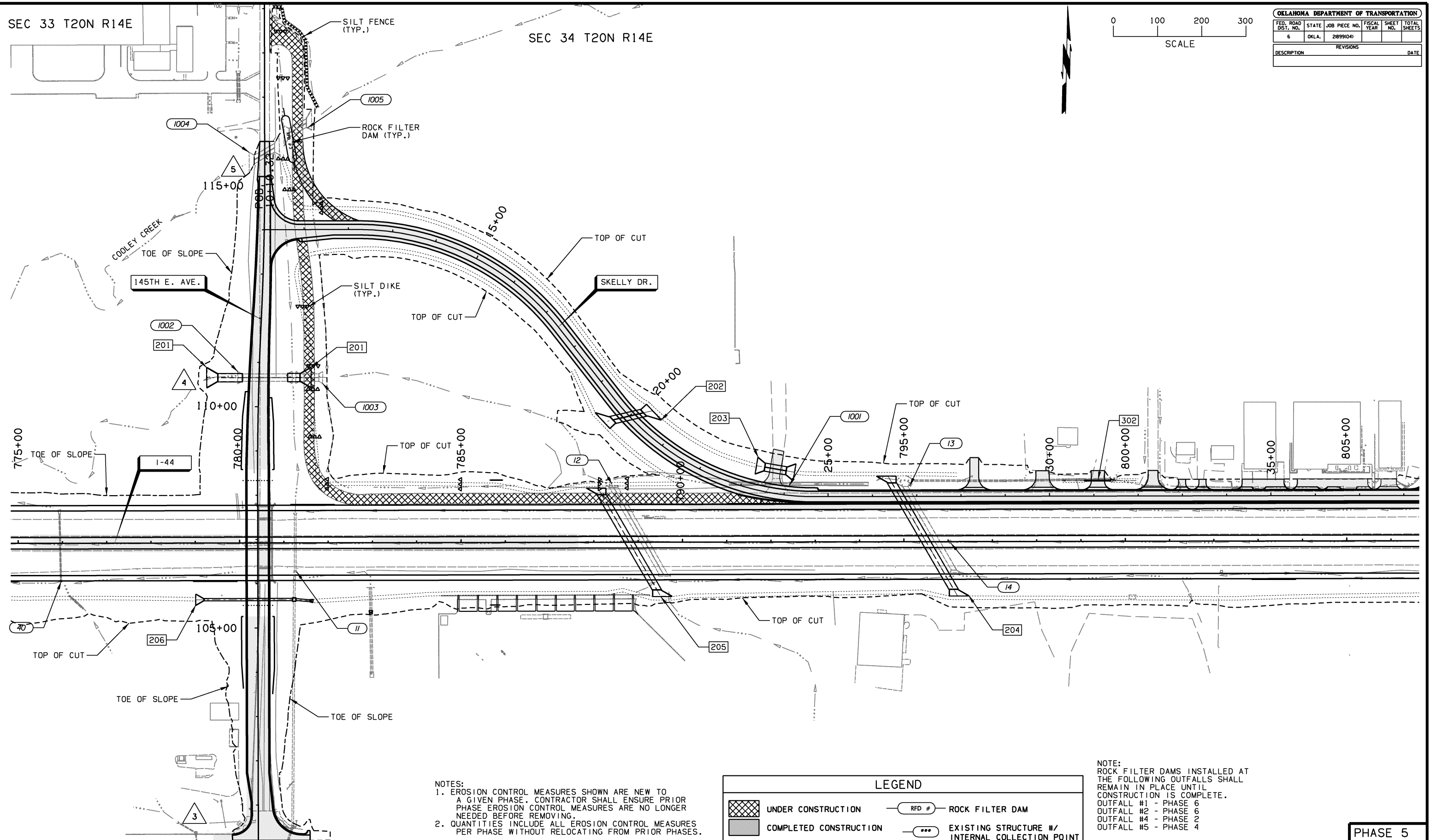


SEC 33 T20N R14E

SEC 34 T20N R14E



| OKLAHOMA DEPARTMENT OF TRANSPORTATION | | | | | |
|---------------------------------------|-------|---------------|-------------|-----------|--------------|
| FED. ROAD DIST. NO. | STATE | JOB PIECE NO. | FISCAL YEAR | SHEET NO. | TOTAL SHEETS |
| 6 | OKLA. | 21899(04) | | | |
| DESCRIPTION | | | REVISIONS | DATE | |



- NOTES:
1. EROSION CONTROL MEASURES SHOWN ARE NEW TO A GIVEN PHASE. CONTRACTOR SHALL ENSURE PRIOR PHASE EROSION CONTROL MEASURES ARE NO LONGER NEEDED BEFORE REMOVING.
 2. QUANTITIES INCLUDE ALL EROSION CONTROL MEASURES PER PHASE WITHOUT RELOCATING FROM PRIOR PHASES.

| LEGEND | |
|--------|--|
| | UNDER CONSTRUCTION |
| | COMPLETED CONSTRUCTION |
| | SILT DIKE |
| | SILT FENCE |
| | SEDIMENT FILTER |
| | ROCK FILTER DAM |
| | EXISTING STRUCTURE #/ INTERNAL COLLECTION POINT |
| | DRAINAGE STRUCTURE #/ INTERNAL COLLECTION POINT |
| | OUTFALL # |

NOTE:
ROCK FILTER DAMS INSTALLED AT THE FOLLOWING OUTFALLS SHALL REMAIN IN PLACE UNTIL CONSTRUCTION IS COMPLETE.
OUTFALL #1 - PHASE 6
OUTFALL #2 - PHASE 6
OUTFALL #4 - PHASE 2
OUTFALL #5 - PHASE 4

SEC 4 T19N R14E

SEC 3 T19N R14E

PHASE 5

| | | | |
|----------|---------------|-------------------------|-------------------------|
| DESIGN | AKS | 6/14 | TULSA & ROGERS COUNTIES |
| DRAWN | TML | 6/14 | |
| CHECKED | KMM | 6/16 | |
| APPROVED | | | |
| SQUAD | GARVER | STATE JOB NO. 21899(04) | SHEET NO. 184 |

EROSION CONTROL PLAN
(SHEET 7 OF 19)