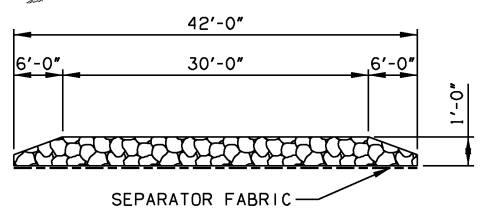
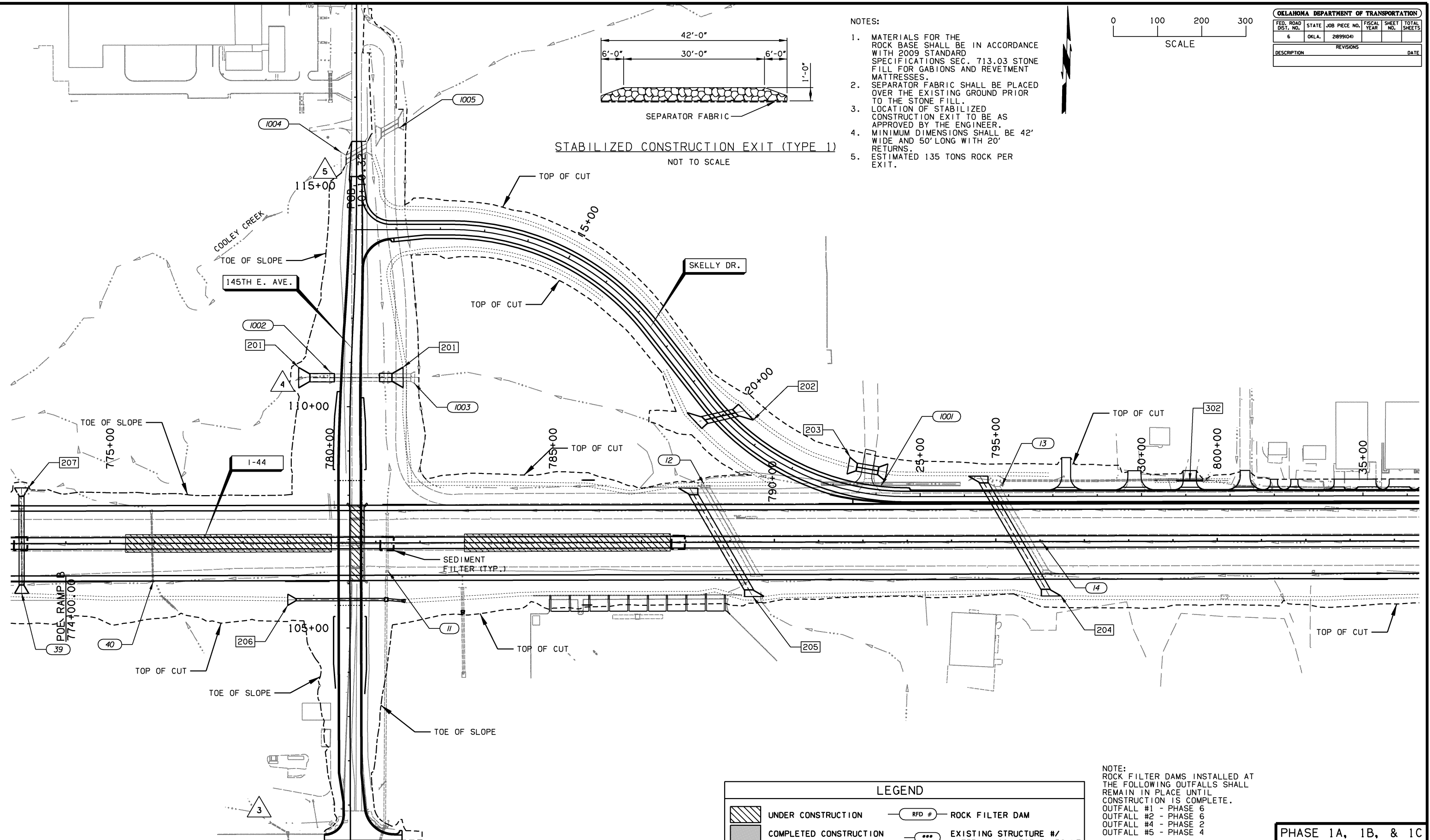


- NOTES:
- MATERIALS FOR THE ROCK BASE SHALL BE IN ACCORDANCE WITH 2009 STANDARD SPECIFICATIONS SEC. 713.03 STONE FILL FOR GABIONS AND REVETMENT MATTRESSES.
  - SEPARATOR FABRIC SHALL BE PLACED OVER THE EXISTING GROUND PRIOR TO THE STONE FILL.
  - LOCATION OF STABILIZED CONSTRUCTION EXIT TO BE AS APPROVED BY THE ENGINEER.
  - MINIMUM DIMENSIONS SHALL BE 42' WIDE AND 50' LONG WITH 20' RETURNS.
  - ESTIMATED 135 TONS ROCK PER EXIT.



STABILIZED CONSTRUCTION EXIT (TYPE 1)  
NOT TO SCALE



- NOTES:
- EROSION CONTROL MEASURES SHOWN ARE NEW TO A GIVEN PHASE. CONTRACTOR SHALL ENSURE PRIOR PHASE EROSION CONTROL MEASURES ARE NO LONGER NEEDED BEFORE REMOVING.
  - QUANTITIES INCLUDE ALL EROSION CONTROL MEASURES PER PHASE WITHOUT RELOCATING FROM PRIOR PHASES.

LEGEND	
	UNDER CONSTRUCTION
	COMPLETED CONSTRUCTION
	SILT DIKE
	SILT FENCE
	SEDIMENT FILTER
	ROCK FILTER DAM
	EXISTING STRUCTURE #/ INTERNAL COLLECTION POINT
	DRAINAGE STRUCTURE #/ INTERNAL COLLECTION POINT
	OUTFALL #

NOTE:  
ROCK FILTER DAMS INSTALLED AT THE FOLLOWING OUTFALLS SHALL REMAIN IN PLACE UNTIL CONSTRUCTION IS COMPLETE.  
OUTFALL #1 - PHASE 6  
OUTFALL #2 - PHASE 6  
OUTFALL #4 - PHASE 2  
OUTFALL #5 - PHASE 4

PHASE 1A, 1B, & 1C

DESIGN	AKS	6/14	TULSA & ROGERS COUNTIES
DRAWN	TML	6/14	
CHECKED	KMM	6/16	
APPROVED			
SQUAD	<b>GARVER</b>	STATE JOB NO. 21899(04)	SHEET NO. 178

EROSION CONTROL PLAN  
(SHEET 1 OF 19)