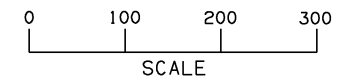


SEC 33 T20N R14E

SEC 34 T20N R14E

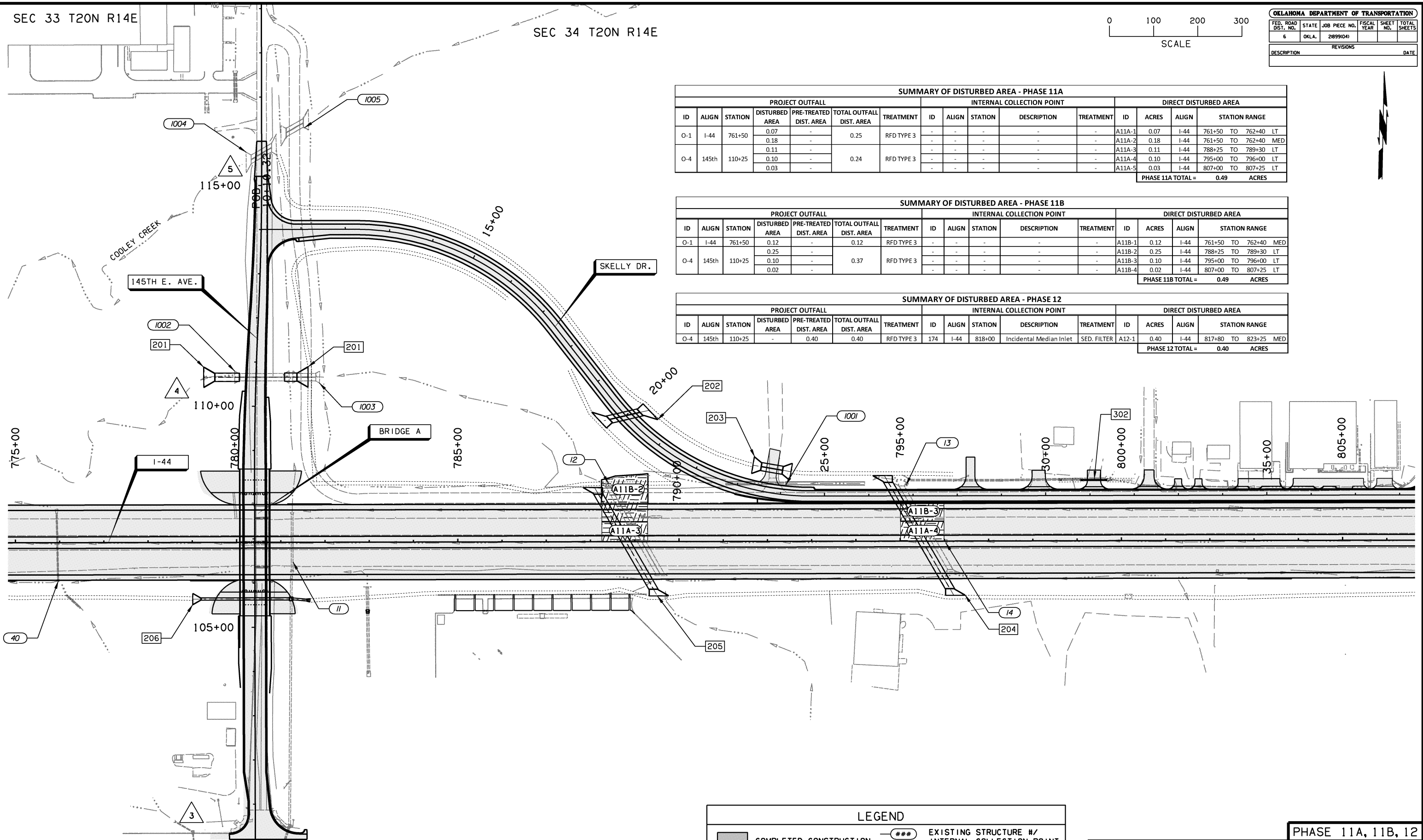


OKLAHOMA DEPARTMENT OF TRANSPORTATION						
FED. ROAD DIST. NO.	STATE	JOB PIECE NO.	FISCAL YEAR	SHEET NO.	TOTAL SHEETS	
6	OKLA.	21899(04)				
DESCRIPTION			REVISIONS		DATE	

SUMMARY OF DISTURBED AREA - PHASE 11A															
PROJECT OUTFALL						INTERNAL COLLECTION POINT				DIRECT DISTURBED AREA					
ID	ALIGN	STATION	DISTURBED AREA	PRE-TREATED DIST. AREA	TOTAL OUTFALL DIST. AREA	TREATMENT	ID	ALIGN	STATION	DESCRIPTION	TREATMENT	ID	ACRES	ALIGN	STATION RANGE
O-1	I-44	761+50	0.07	-	0.25	RFD TYPE 3	-	-	-	-	-	A11A-1	0.07	I-44	761+50 TO 762+40
			0.18	-			-	-	-	-	A11A-2	0.18	I-44	761+50 TO 762+40	
O-4	145th	110+25	0.11	-	0.24	RFD TYPE 3	-	-	-	-	-	A11A-3	0.11	I-44	788+25 TO 789+30
			0.10	-			-	-	-	-	A11A-4	0.10	I-44	795+00 TO 796+00	
			0.03	-			-	-	-	-	A11A-5	0.03	I-44	807+00 TO 807+25	
												PHASE 11A TOTAL =		0.49	ACRES

SUMMARY OF DISTURBED AREA - PHASE 11B															
PROJECT OUTFALL						INTERNAL COLLECTION POINT				DIRECT DISTURBED AREA					
ID	ALIGN	STATION	DISTURBED AREA	PRE-TREATED DIST. AREA	TOTAL OUTFALL DIST. AREA	TREATMENT	ID	ALIGN	STATION	DESCRIPTION	TREATMENT	ID	ACRES	ALIGN	STATION RANGE
O-1	I-44	761+50	0.12	-	0.12	RFD TYPE 3	-	-	-	-	-	A11B-1	0.12	I-44	761+50 TO 762+40
			0.25	-			-	-	-	-	A11B-2	0.25	I-44	788+25 TO 789+30	
O-4	145th	110+25	0.10	-	0.37	RFD TYPE 3	-	-	-	-	-	A11B-3	0.10	I-44	795+00 TO 796+00
			0.02	-			-	-	-	-	A11B-4	0.02	I-44	807+00 TO 807+25	
												PHASE 11B TOTAL =		0.49	ACRES

SUMMARY OF DISTURBED AREA - PHASE 12															
PROJECT OUTFALL						INTERNAL COLLECTION POINT				DIRECT DISTURBED AREA					
ID	ALIGN	STATION	DISTURBED AREA	PRE-TREATED DIST. AREA	TOTAL OUTFALL DIST. AREA	TREATMENT	ID	ALIGN	STATION	DESCRIPTION	TREATMENT	ID	ACRES	ALIGN	STATION RANGE
O-4	145th	110+25	-	0.40	0.40	RFD TYPE 3	174	I-44	818+00	Incidental Median Inlet	SED. FILTER	A12-1	0.40	I-44	817+80 TO 823+25
												PHASE 12 TOTAL =		0.40	ACRES



SEC 4 T19N R14E

SEC 3 T19N R14E

LEGEND			
	COMPLETED CONSTRUCTION		EXISTING STRUCTURE #/ INTERNAL COLLECTION POINT
	DISTURBED AREA		PROPOSED STRUCTURE #/ INTERNAL COLLECTION POINT
	DISTURBED AREA #		OUTFALL #

DESIGN	AKS	6/14	TULSA & ROGERS COUNTIES
DRAWN	TML	6/14	
CHECKED	KMM	6/16	
APPROVED			
SQUAD	GARVER	STATE JOB NO. 21899(04)	SHEET NO. 176

DISTURBED AREA MAP
(SHEET 21 OF 22)

PHASE 11A, 11B, 12