
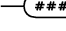

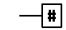


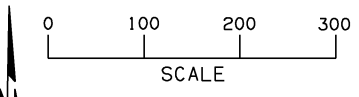


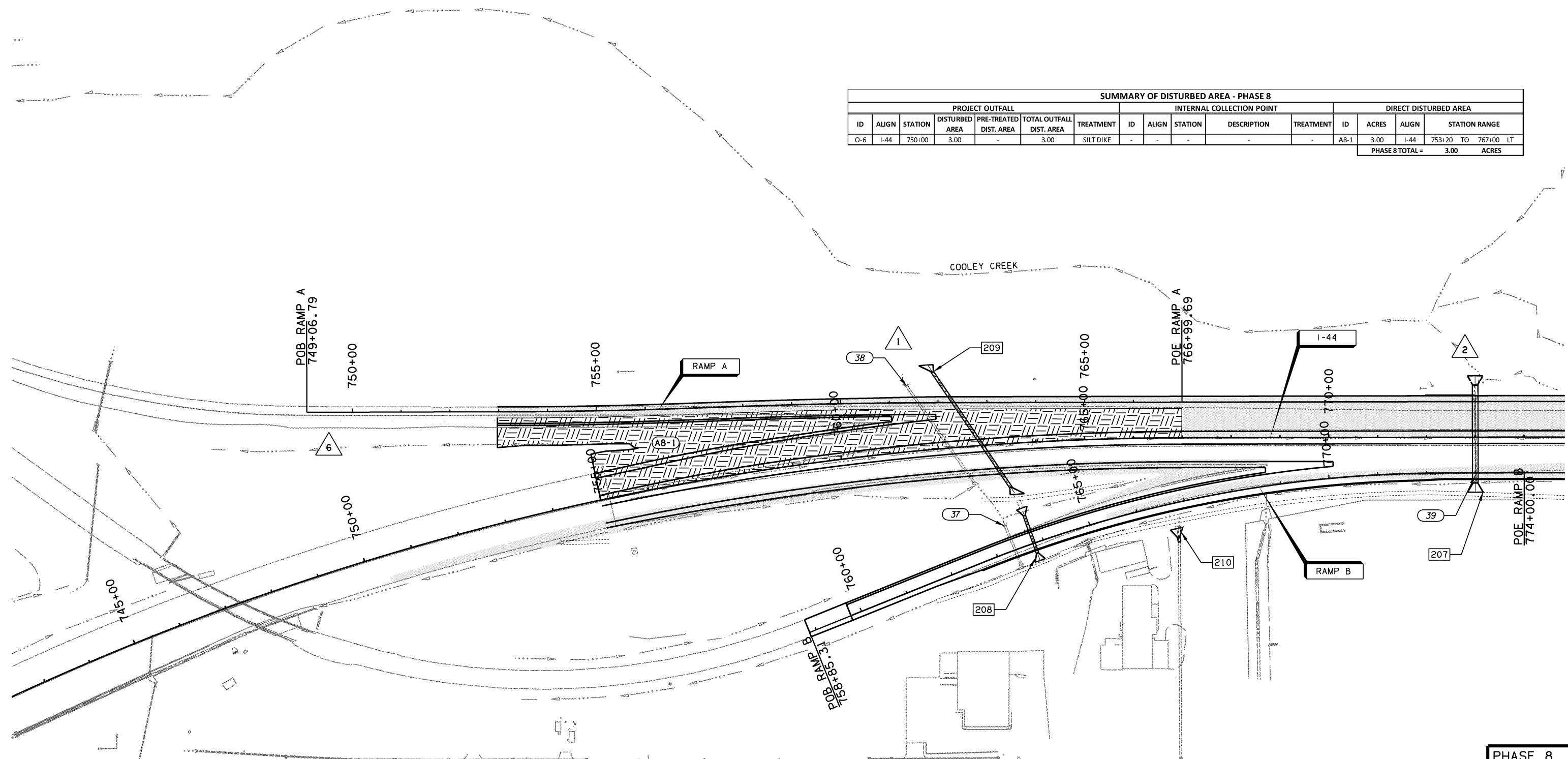
SEC 33 T20N R14E

LEGEND			
	COMPLETED CONSTRUCTION		EXISTING STRUCTURE #/ INTERNAL COLLECTION POINT
	DISTURBED AREA		PROPOSED STRUCTURE #/ INTERNAL COLLECTION POINT
	DISTURBED AREA #		OUTFALL #



OKLAHOMA DEPARTMENT OF TRANSPORTATION					
FED. ROAD DIST. NO.	STATE	JOB PIECE NO.	FISCAL YEAR	SHEET NO.	TOTAL SHEETS
6	OKLA.	21899(04)			
DESCRIPTION			REVISIONS	DATE	

SUMMARY OF DISTURBED AREA - PHASE 8																
PROJECT OUTFALL							INTERNAL COLLECTION POINT				DIRECT DISTURBED AREA					
ID	ALIGN	STATION	DISTURBED AREA	PRE-TREATED DIST. AREA	TOTAL OUTFALL DIST. AREA	TREATMENT	ID	ALIGN	STATION	DESCRIPTION	TREATMENT	ID	ACRES	ALIGN	STATION RANGE	
O-6	I-44	750+00	3.00	-	3.00	SILT DIKE	-	-	-	-	-	A8-1	3.00	I-44	753+20 TO 767+00 LT	
													PHASE 8 TOTAL =		3.00	ACRES



SEC 4 T19N R14E

DESIGN	AKS	6/14	TULSA & ROGERS COUNTIES
DRAWN	TML	6/14	
CHECKED	KMM	6/16	
APPROVED			
SQUAD	GARVER	STATE JOB NO. 21899(04)	SHEET NO. 170

PHASE 8
DISTURBED AREA MAP
(SHEET 15 OF 22)