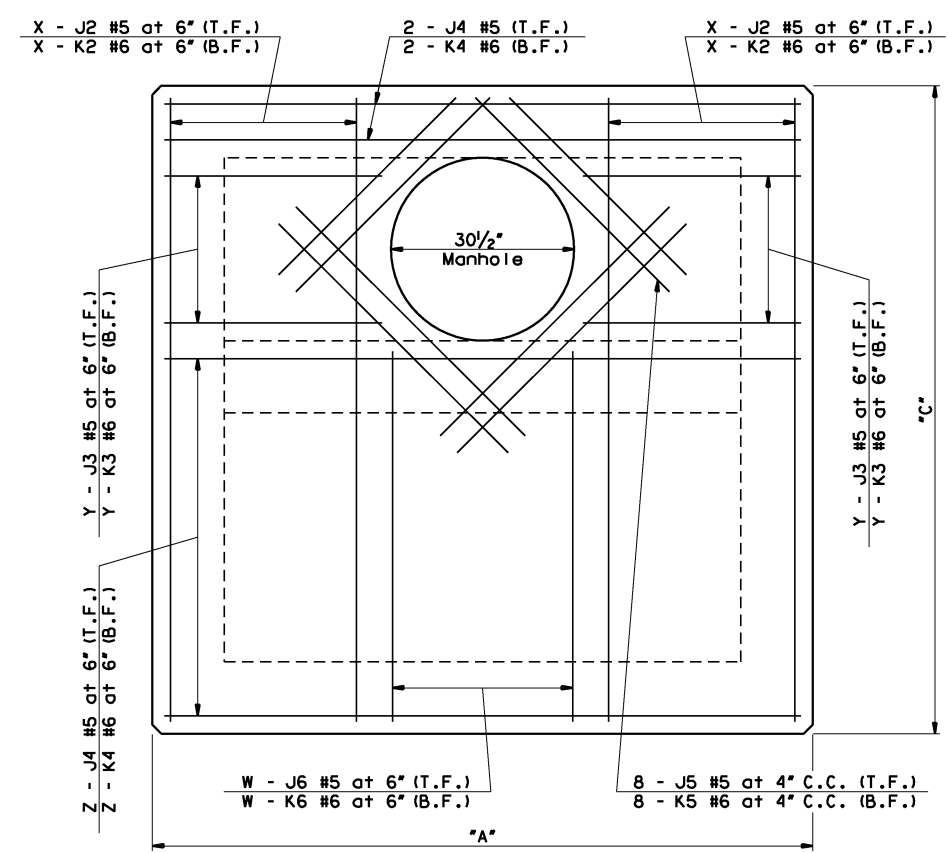
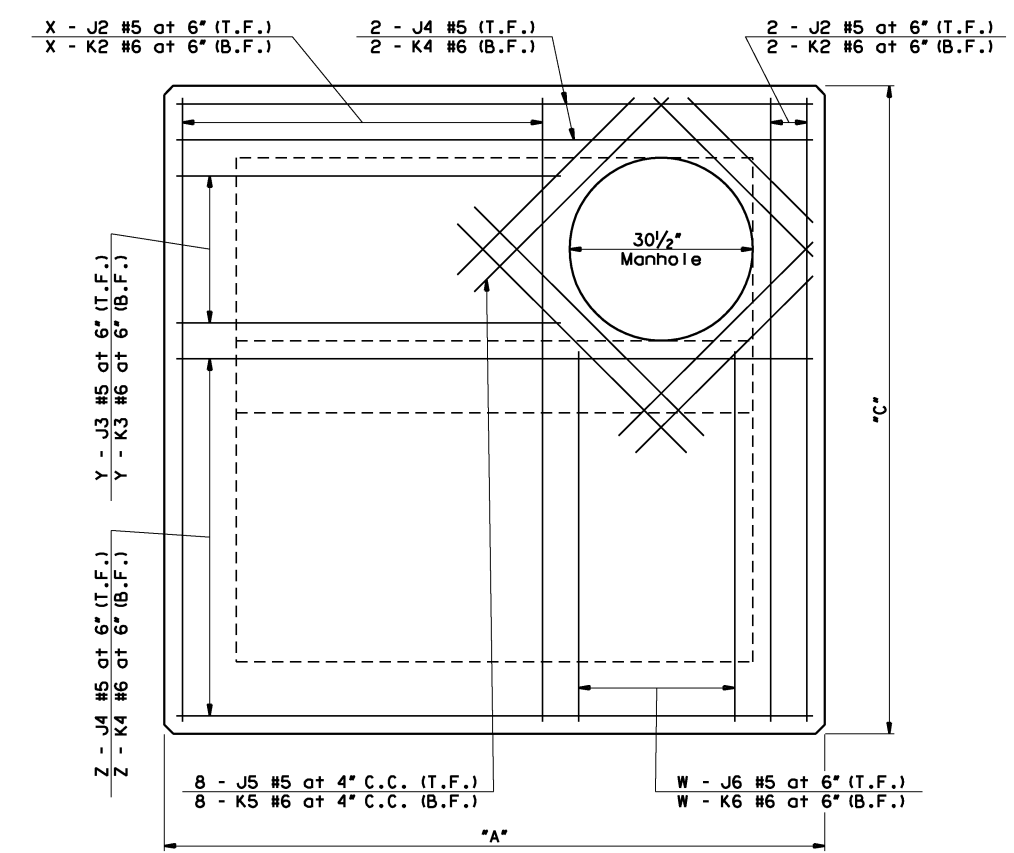


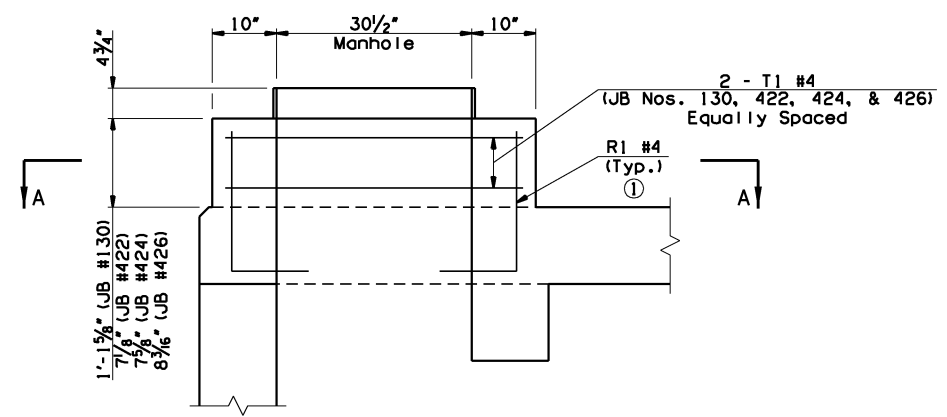
TOP SLAB REINFORCING DETAILS
(Only applicable for Junction Box No. 421)



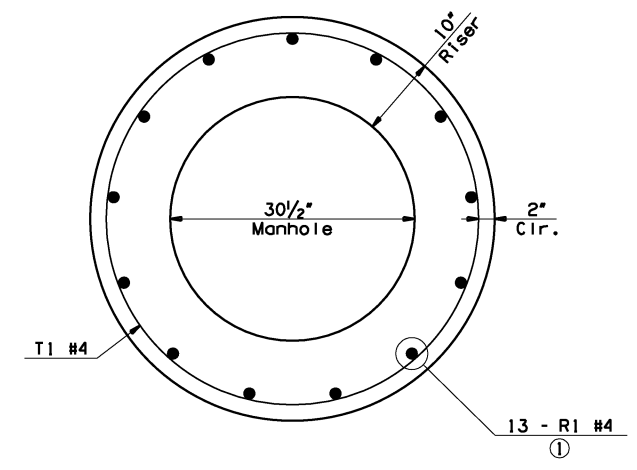
TOP SLAB REINFORCING DETAILS
(Only applicable for Junction Box Nos. 422, 424, & 426)



TOP SLAB REINFORCING DETAILS
(Only applicable for Junction Box No. 130)



TYPICAL SECTION THRU RISER
(Shown for Junction Box No. 422)
(Similar for Junction Box Nos. 130, 424, & 426)



SECTION A-A

NOTES:
See Sheet No. 147 for layout and dimensions of junction boxes.
See Sheet No. 148 for additional reinforcement layout details.
See Sheet No. 150 for bar bends and bar lists for junction boxes.

① Rotate R1 bars so that 2" minimum clearance is maintained.

TABLE OF VARIABLES				
JUNCTION BOX NO.	W	X	Y	Z
130	5	11	5	11
421	6	8	6	8
422	6	8	5	15
424	6	3	5	15
426	6	3	5	15

LEGEND:
B.F. = Bottom Face
T.F. = Top Face

145TH OVER I-44 TULSA & ROGERS COUNTIES		DESIGN	JGS	12/14
JUNCTION BOX DETAILS (SHEET 3 OF 4)		DETAIL	JGS	12/14
		CHECK	XXX	XXX
		GARVER		
STATE OF OKLAHOMA	DEPARTMENT OF TRANSPORTATION			
JOB PIECE NO. 21899(04)		SHEET NO. 149		