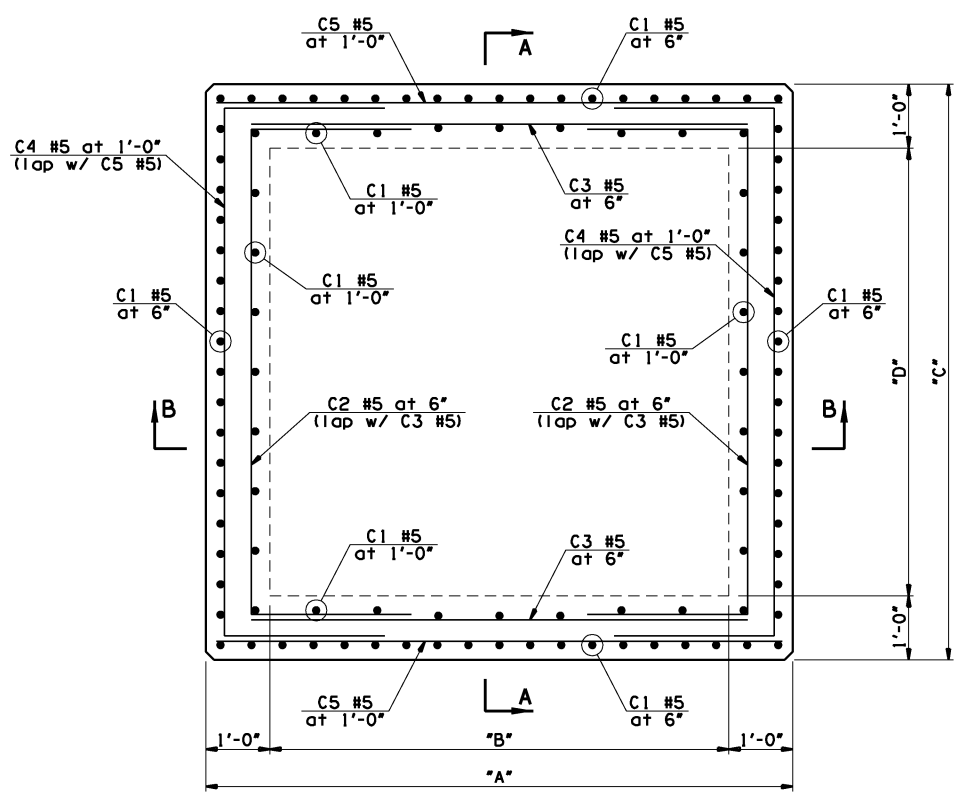
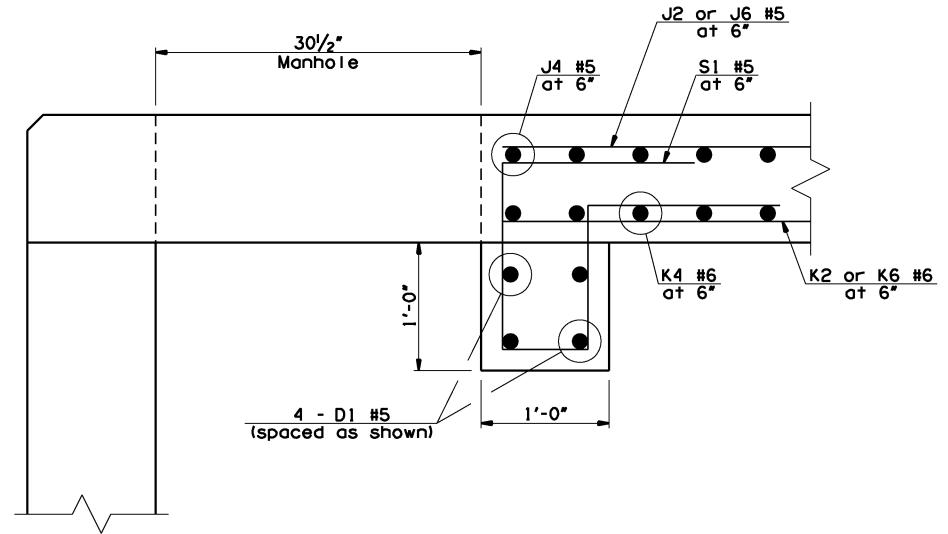


OKLAHOMA DEPARTMENT OF TRANSPORTATION						
FED. ROAD DIST. NO.	STATE	JOB PIECE NO.	FISCAL YEAR	SHEET NO.	TOTAL SHEETS	
6	OKLA.	21899(04)				
DESCRIPTION		REVISIONS		DATE		



**PLAN VIEW OF WALL REINFORCING**



**TYPICAL SECTION THRU EDGE BEAM**  
(Edge Beam only at Junction Box Nos. 130, 422, 424, & 426)

**NOTES:**  
See Sheet No. 147 for layout and dimensions of junction boxes.  
See Sheet No. 148 for details on top slab and riser.  
See Sheet No. 150 for bar bends and bar lists for junction boxes.

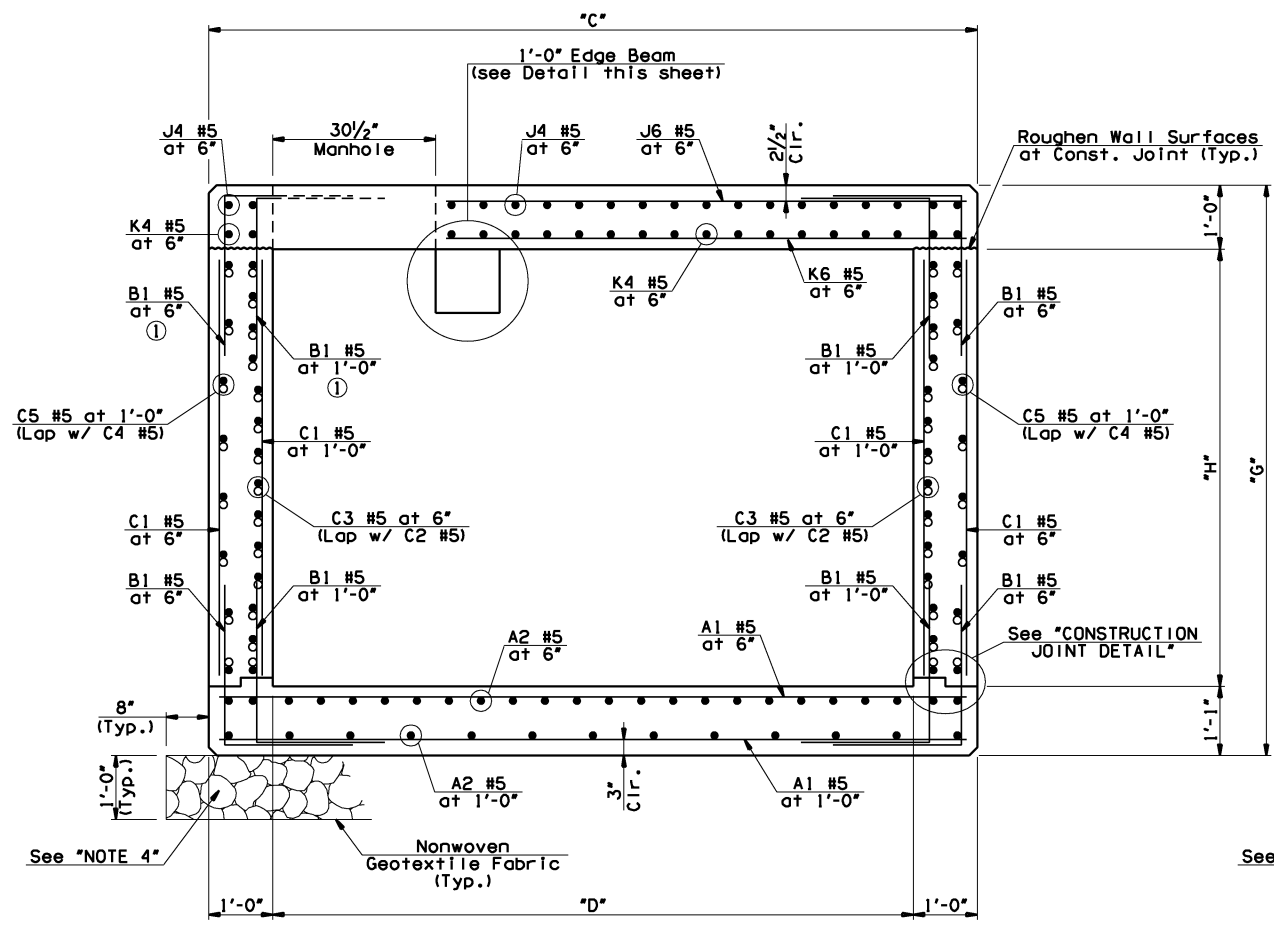
**DESIGN DATA:**

1. Designed in accordance with 2012 AASHTO LRFD Bridge Design Specifications and current interim specifications.
2. Designed for HL-93 loading.
3. Materials:  
Concrete (Class AA)  $f'_c = 4,000$  psi  
Reinforcing Steel (Grade 60)  $F_y = 60,000$  psi

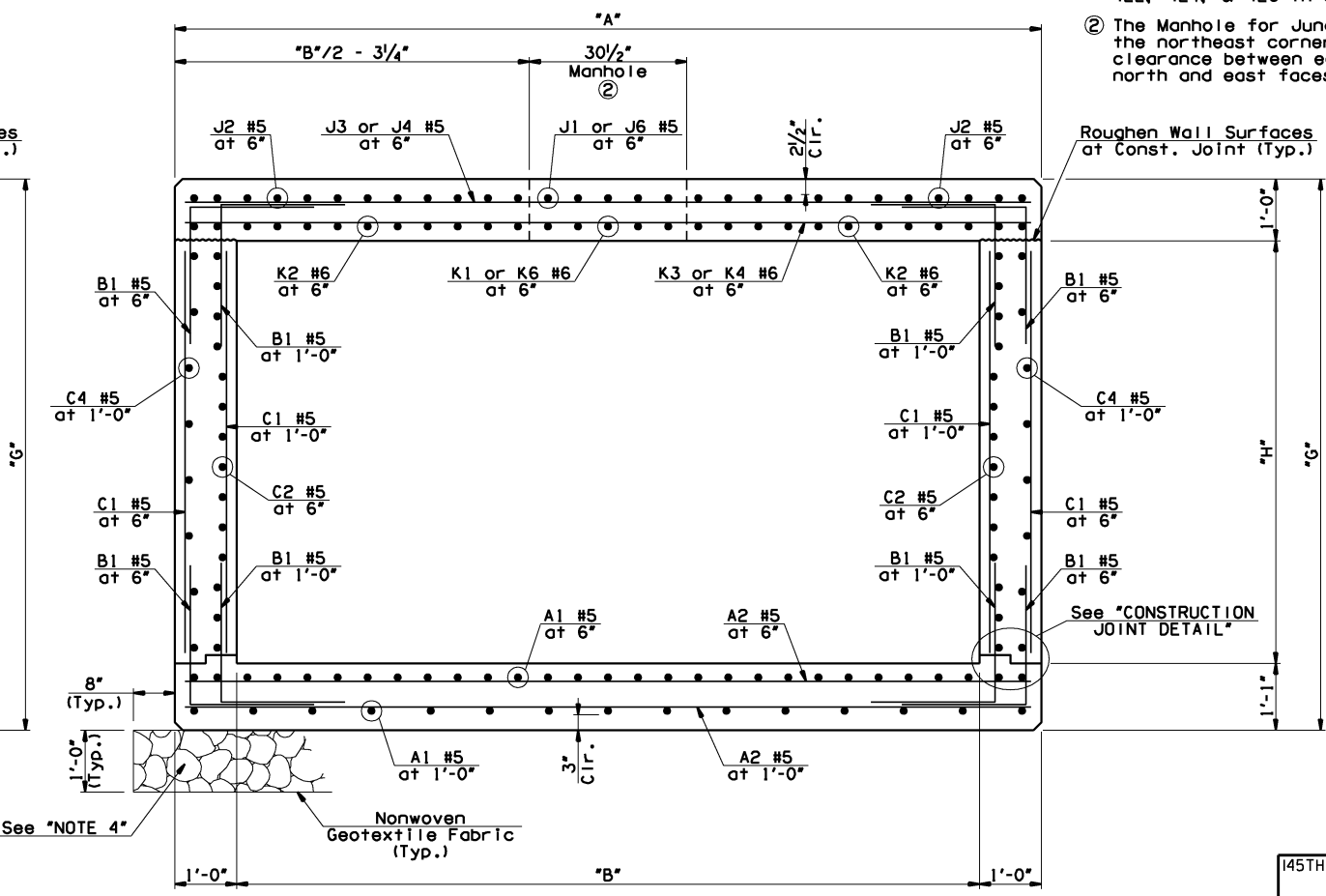
**GENERAL NOTES:**

1. All construction and material requirements shall be in accordance with the 2009 Oklahoma Standard Specifications for Highway Construction.
2. All concrete edges shall have a 1/2 inch chamfer unless otherwise shown or noted. All chamfer strips shall be sized lumber.
3. All reinforcing steel shall have a 2 inch minimum clear cover unless otherwise shown. Reinforcing steel shall be deformed bars and cold bent.
4. Place 1 foot of aggregate base below all junction box structures. The aggregate base shall extend a minimum of 8 inches past the edge of the junction box. The aggregate base shall be ODOT Type "A" or approved equivalent and compacted to at least 98% of the material's maximum density (AASHTO T-180, Method D).
5. Place non-shrink grout in the bottom of the junction boxes to provide positive drainage to the exit flow line. The non-shrink grout shall be in accordance with ODOT Standard Specifications Section 733.07 and shall be approved by the Engineer.

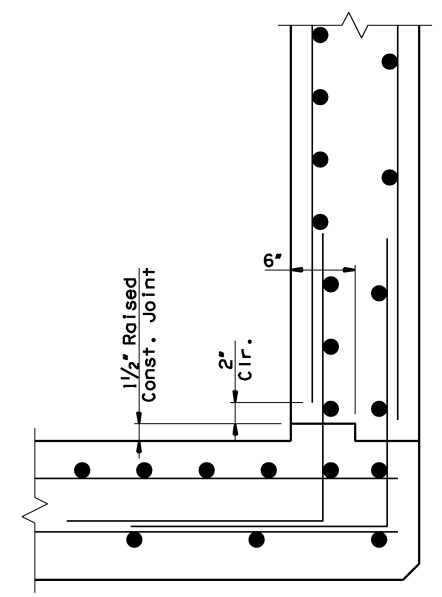
- ① Rotate horizontal leg of B1 bars at Junction Box Nos. 130, 422, 424, & 426 in order to maintain a 2 inch minimum clearance.
- ② The Manhole for Junction Box No. 130 shall be constructed in the northeast corner of the top slab. Provide 1 foot minimum clearance between edge of Manhole and edge of top slab at the north and east faces of the top slab.



**SECTION A-A**  
(Layout of Manhole and Reinforcement shown for Junction Box Nos. 130, 422, 424, & 426)  
(Layout similar for Junction Box No. 421 except Manhole is centered in Top Slab and no Edge Beam)



**SECTION B-B**  
(Layout of Manhole and Reinforcement shown for Junction Box Nos. 130, 422, 424, & 426)  
(Layout similar for Junction Box No. 421 except Manhole is centered in Top Slab and no Edge Beam)



**CONSTRUCTION JOINT DETAIL**  
(Located at all Exterior Walls at the Bottom Slab)

145TH OVER I-44	TULSA & ROGERS COUNTIES	DESIGN	JGS	12/14
		DETAIL	JGS	12/14
		CHECK	XXX	XXX
<b>GARVER</b>				

<b>STATE OF OKLAHOMA</b>	<b>DEPARTMENT OF TRANSPORTATION</b>
JOB PIECE NO. 21899(04)	SHEET NO. 148