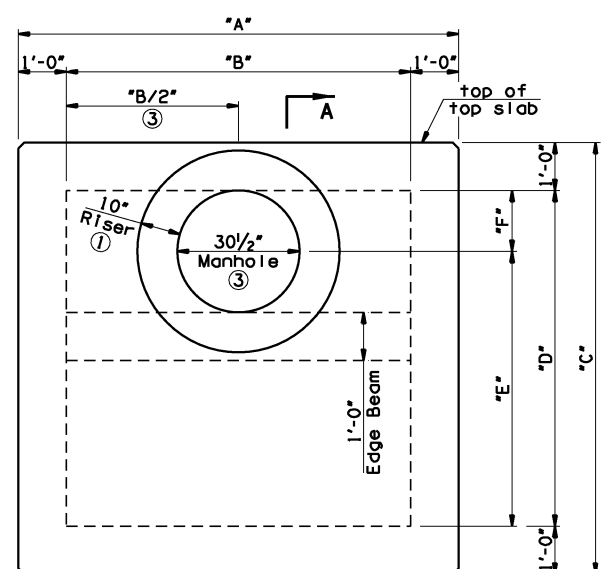
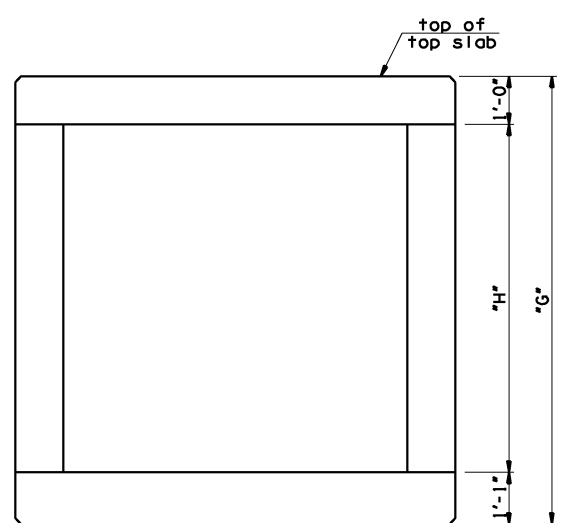


**PLAN WITH CENTERED MANHOLE**  
(only applicable for Junction Box No. 421)

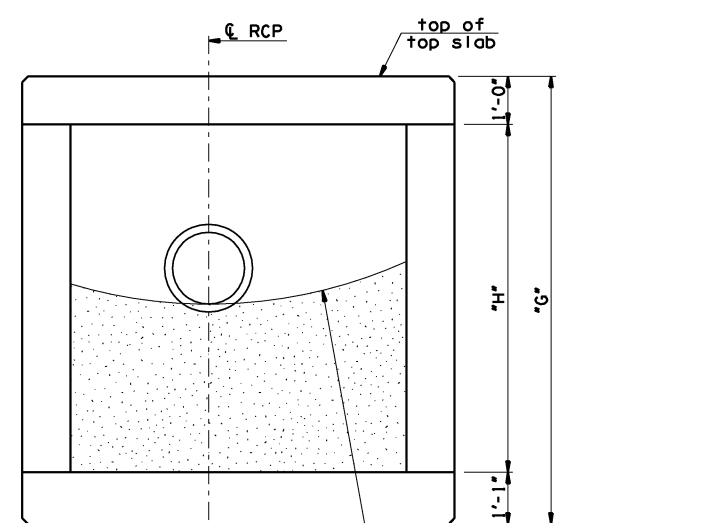


**PLAN WITH OFFSET MANHOLE**  
(only applicable for Junction Box Nos. 130, 422, 424, & 426)

JUNCTION BOX NO.	NORTH WALL		EAST WALL		SOUTH WALL		WEST WALL	
	WALL ELEVATION DESCRIPTION	FLOWLINE ELEVATION	WALL ELEVATION DESCRIPTION	FLOWLINE ELEVATION	WALL ELEVATION DESCRIPTION	FLOWLINE ELEVATION	WALL ELEVATION DESCRIPTION	FLOWLINE ELEVATION
130	1 - 18" PROPOSED RCP	693.88	1 - 42" PROPOSED RCP	693.40	1 - 4'x4' RCB EXTENSION	697.47	1 - 4'x4' PROPOSED RCB	692.62
421	N/A		1 - 18" PROPOSED RCP	704.78	1 - 5'x4' PROPOSED RCB	702.28	1 - 5'x4' PROPOSED RCB	702.28
422	1 - 5'x4' PROPOSED RCB	702.43	1 - 5'x4' PROPOSED RCB	702.43	N/A		N/A	
424	1 - 18" PROPOSED RCP	705.89	1 - 5'x4' PROPOSED RCB	703.39	N/A		1 - 5'x4' PROPOSED RCB	703.39
426	1 - 18" PROPOSED RCP	705.07	1 - 48" PROPOSED RCP	703.83	N/A		1 - 5'x4' PROPOSED RCB	703.83

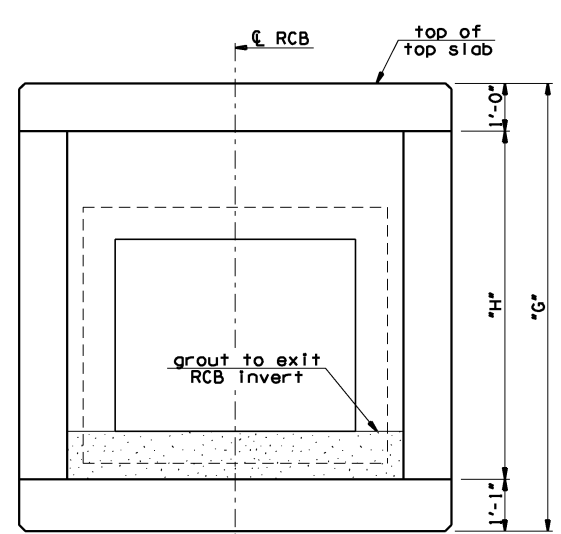


**WALL ELEVATION VIEW WITHOUT RCP'S OR RCB'S**

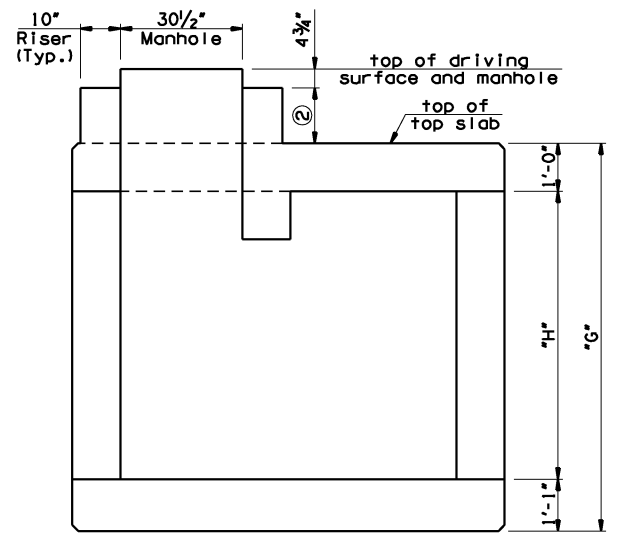


**WALL ELEVATION VIEW WITH ONE RCP**

JUNCTION BOX NO.	TOP OF TOP SLAB	TOP OF BOTTOM SLAB
130	703.47	691.55
421	709.52	701.27
422	708.43	701.43
424	709.39	702.39
426	709.83	702.83



**WALL ELEVATION VIEW WITH ONE RCB**



**ELEVATION VIEW A-A WITH RISER**

JUNCTION BOX NO.	"A"	"B"	"C"	"D"	"E"	"F"	"G"	"H"
130	9'-0"	7'-0"	9'-0"	7'-0"	5'-8 3/4"	1'-3 1/4"	13'-0"	10'-11"
421	11'-0"	9'-0"	11'-0"	9'-0"	4'-6"	4'-6"	9'-4"	7'-3"
422	11'-0"	9'-0"	11'-0"	9'-0"	7'-8 3/4"	1'-3 1/4"	8'-1"	6'-0"
424	6'-0"	4'-0"	11'-0"	9'-0"	7'-8 3/4"	1'-3 1/4"	8'-1"	6'-0"
426	6'-0"	4'-0"	11'-0"	9'-0"	7'-8 3/4"	1'-3 1/4"	8'-1"	6'-0"

- ① 10" concrete riser shall only be used with Junction Box Nos. 130, 422, 424, & 426. See details on Sheet No. 149.
- ② 1'-1 5/8" (JB #130)  
7/8" (JB #422)  
7/8" (JB #424)  
8 7/16" (JB #426)
- ③ The Manhole for Junction Box No. 130 shall be constructed in the northeast corner of the top slab. Provide 1'-0" minimum clearance between edge of Manhole and edge of top slab at the north and east faces of the top slab.

145TH OVER I-44 TULSA & ROGERS COUNTIES		DESIGN	JGS	12/14
JUNCTION BOX DETAILS (SHEET 1 OF 4)		DETAIL	JGS	12/14
		CHECK	XXX	XXX
STATE OF OKLAHOMA		DEPARTMENT OF TRANSPORTATION		
		JOB PIECE NO. 21899(04)		SHEET NO. 147