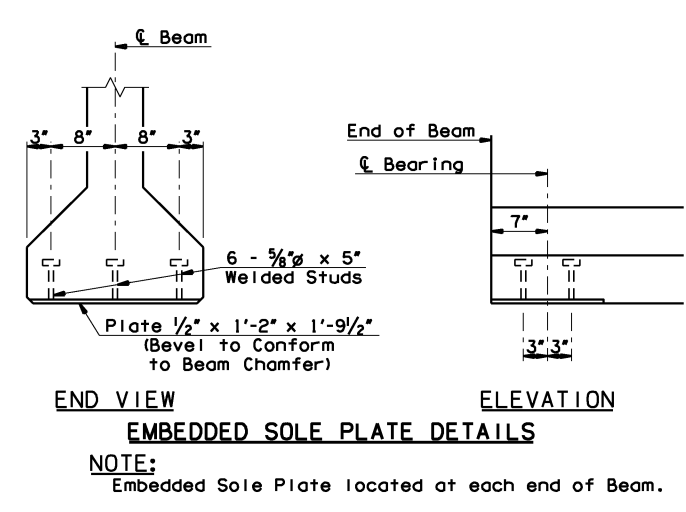
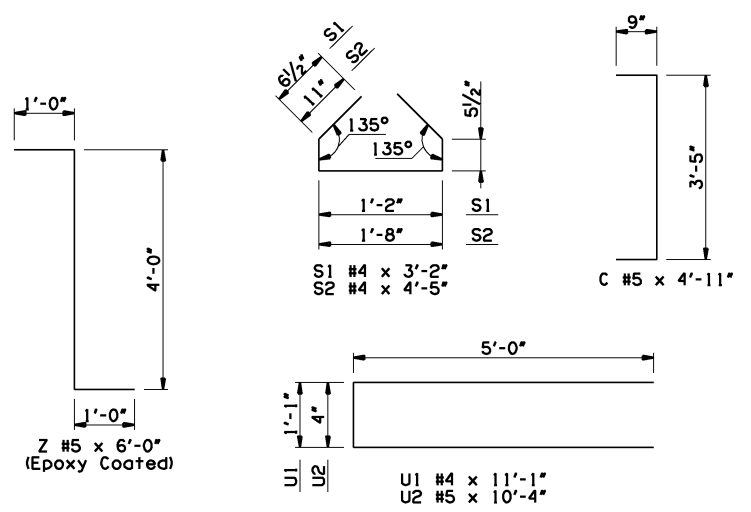
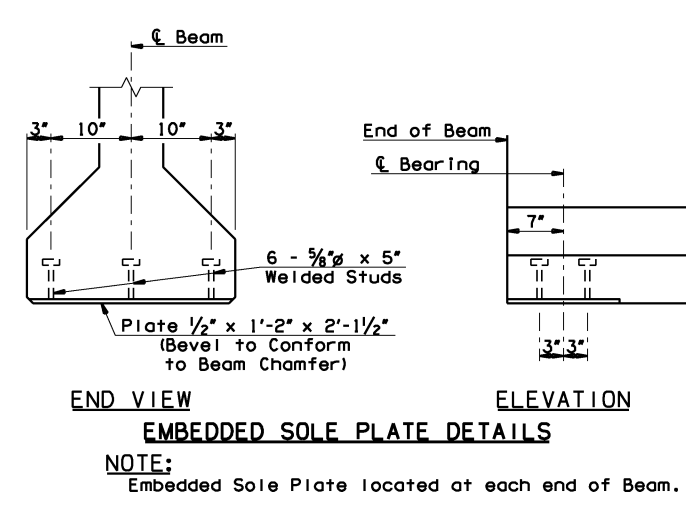
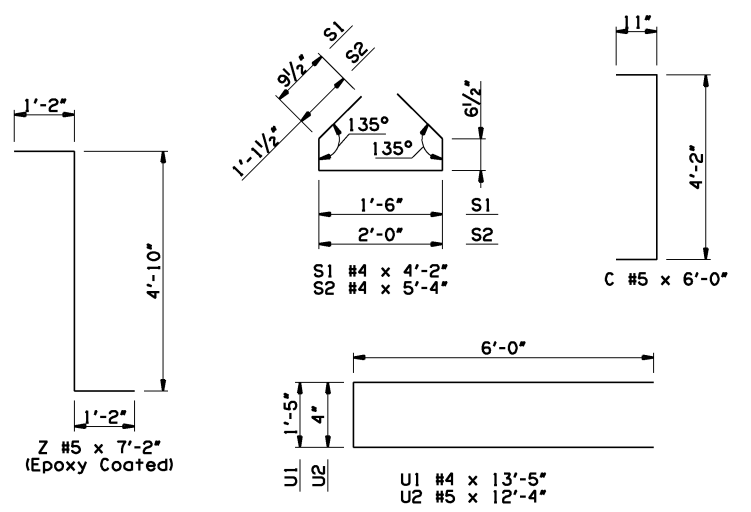


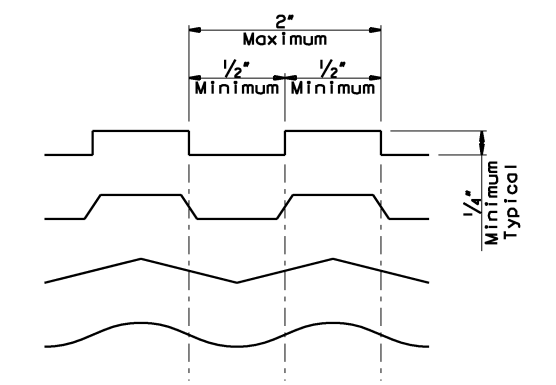
OKLAHOMA DEPARTMENT OF TRANSPORTATION						
FED. ROAD DIST. NO.	STATE	JOB PIECE NO.	FISCAL YEAR	SHEET NO.	TOTAL SHEETS	
6	OKLA.	21899(04)				
DESCRIPTION		REVISIONS			DATE	



**TYPE III BEAMS**



**TYPE IV BEAMS**



**INTENTIONALLY ROUGHENED SURFACE EXAMPLES**

Top surface of P.C. Beams shall be intentionally roughened to a minimum height of 1/4" over a maximum pitch of 2" measured longitudinally along the length of the beam. The crest and trough associated with the height shall not be less than 1/2" and shall extend the full width of the top flange. Roughened surface may be obtained by a special trowel as shown in the examples, by cleaning the concrete surface with a stiff wire brush (or blasting) to the extent that aggregate is exposed to a height of 1/4", or by another approved method. The method used shall be submitted for approval by the Engineer. Repair any damage to reinforcement epoxy coating before placement of deck concrete.

145TH OVER I-44 BRIDGE "A"	TULSA & ROGERS COUNTIES	DESIGN	JMO	2/14
		DETAIL	JMO	3/14
		CHECK	BRT	3/14
BEAM DETAILS				<b>GARVER</b>
STATE OF OKLAHOMA	DEPARTMENT OF TRANSPORTATION			
	JOB PIECE NO. 21899(04)	SHEET NO.	124	