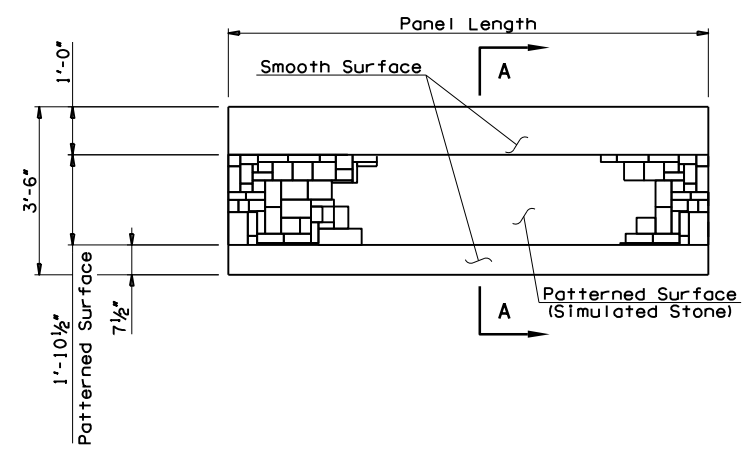
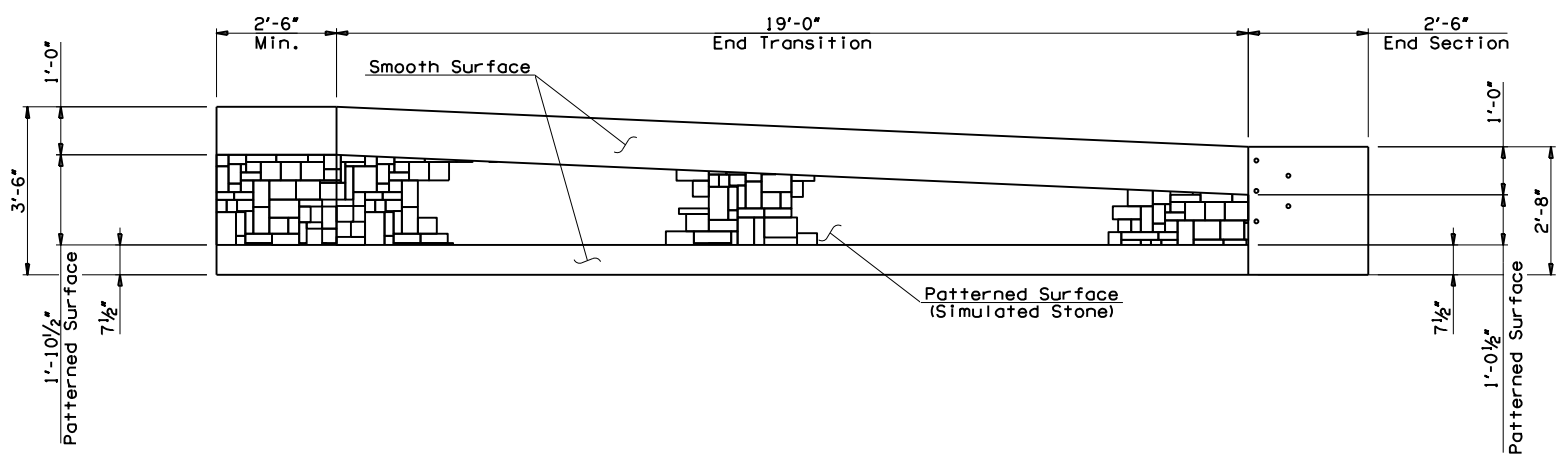


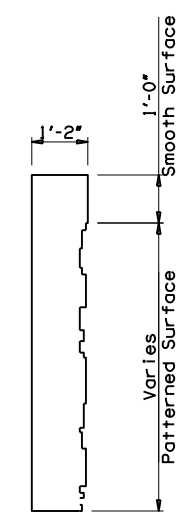
**SECTION A-A**



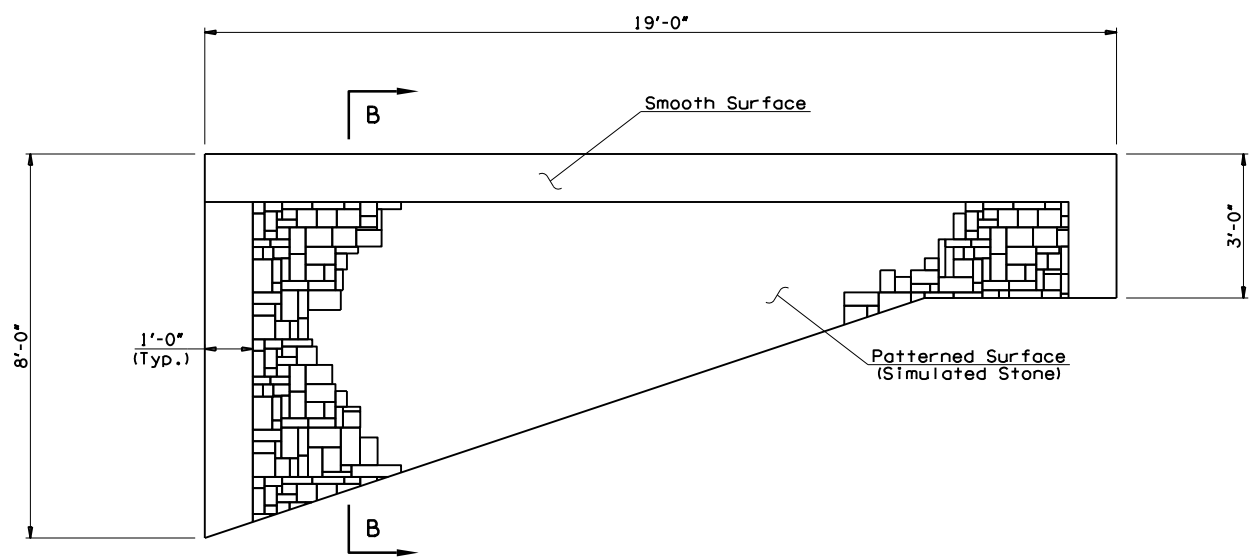
**TYPICAL PANEL ELEVATION**  
(Showing aesthetic treatment details on 42" F-Shaped Parapet)  
(Looking at outside face of Parapet)



**TYPICAL END PANEL ELEVATION**  
(Showing aesthetic treatment details on 42" F-Shaped Parapet)  
(Looking at outside face of Parapet)



**SECTION B-B**



**TYPICAL ABUTMENT WING ELEVATION**  
(Showing aesthetic treatment details on Wingwall)  
(Looking at outside face of Wingwall)

**NOTES:**  
For 42" F-Shaped Parapet layout details, see Sheet No. 121.  
For abutment wing details, see Sheet No. 108.  
Refer to Sheet Nos. 15A-15B for aesthetics specifications and installation notes.

145TH OVER I-44 BRIDGE "A"	TULSA & ROGERS COUNTIES	DESIGN	MJY	8/16
SUPERSTRUCTURE DETAILS (SHEET 4 OF 4)		DETAIL	SJL	8/16
		CHECK	MJY	8/16
		<b>GARVER</b>		
STATE OF OKLAHOMA	DEPARTMENT OF TRANSPORTATION			
	JOB PIECE NO. 21899(04)	SHEET NO. 121A		