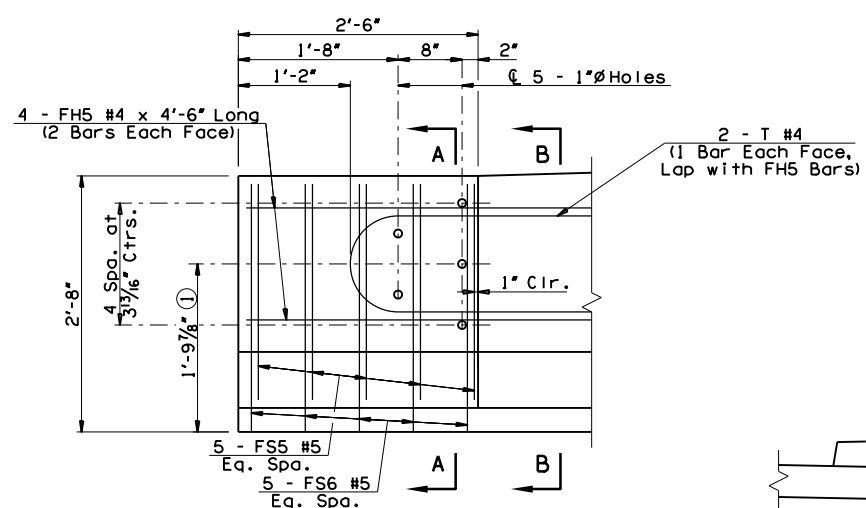


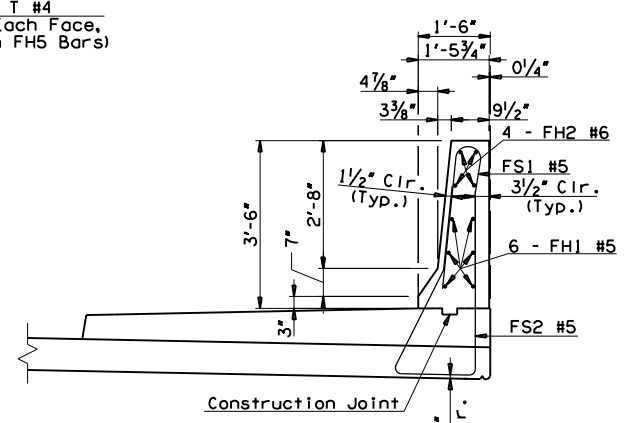
**42" F-SHAPED PARAPET LAYOUT - WITHOUT OPENINGS**

(Looking at Inside Face of West Parapet; East Parapet similar, but opposite hand)

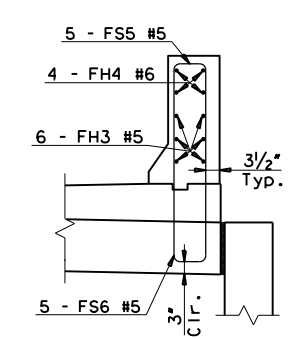
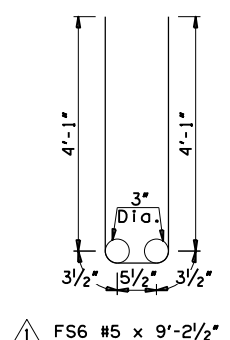


**ELEVATION OF GUARDRAIL CONNECTION HOLES**

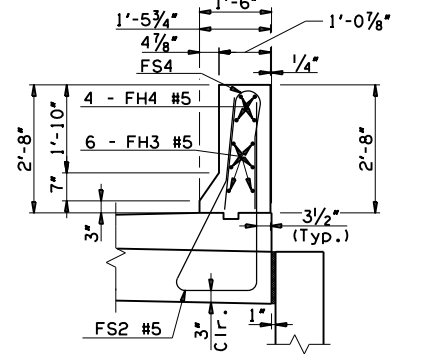
① Dimension modified from standard FSHP-42-00E to match dimensions of THR1-1-02



**SECTION THRU BRIDGE PARAPET AT DECK SLAB**



**SECTION A-A THRU PARAPET AT END SECTION**



**SECTION B-B THRU PARAPET AT TRANSITION END**

**SECTION THRU BRIDGE PARAPET AT APPROACH SLAB**

**NOTE:**  
For details showing the reinforcement layout, bar bend details transition details, and Sloped Face Concrete Parapet see Std. FSHP-42-2-00E.

**CRACK CONTROL JOINTS:**  
Provide double 3/4" chamfers or 3/4" deep sawcut in accordance with the details shown. Place Crack Control Joints at the locations shown.

**CONSTRUCTION JOINTS:**  
Place Construction Joints at the locations shown. Place 1/4" thick preformed expansion material in the Construction Joint in accordance with the details shown. Do not place Longitudinal Reinforcement through a Construction Joint.

145TH OVER I-44 BRIDGE 'A'	TULSA & ROGERS COUNTIES	DESIGN JMO 1/14
		DETAIL JMO 1/14
		CHECK BRT 3/14
SUPERSTRUCTURE DETAILS (SHEET 3 OF 4)		
<b>GARVER</b>		
STATE OF OKLAHOMA	DEPARTMENT OF TRANSPORTATION	
	JOB PIECE NO. 21899(04)	SHEET NO. 121