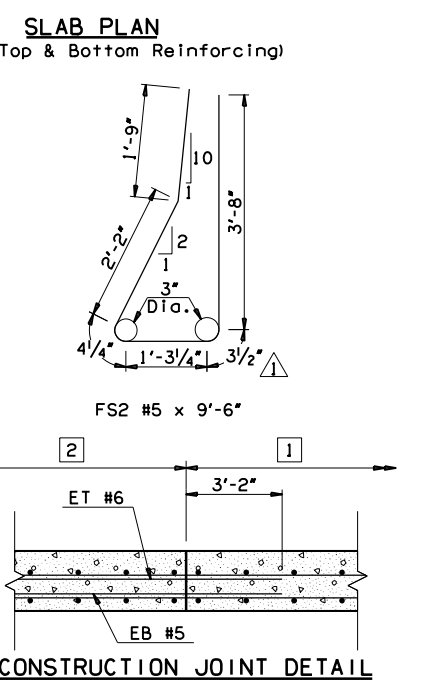
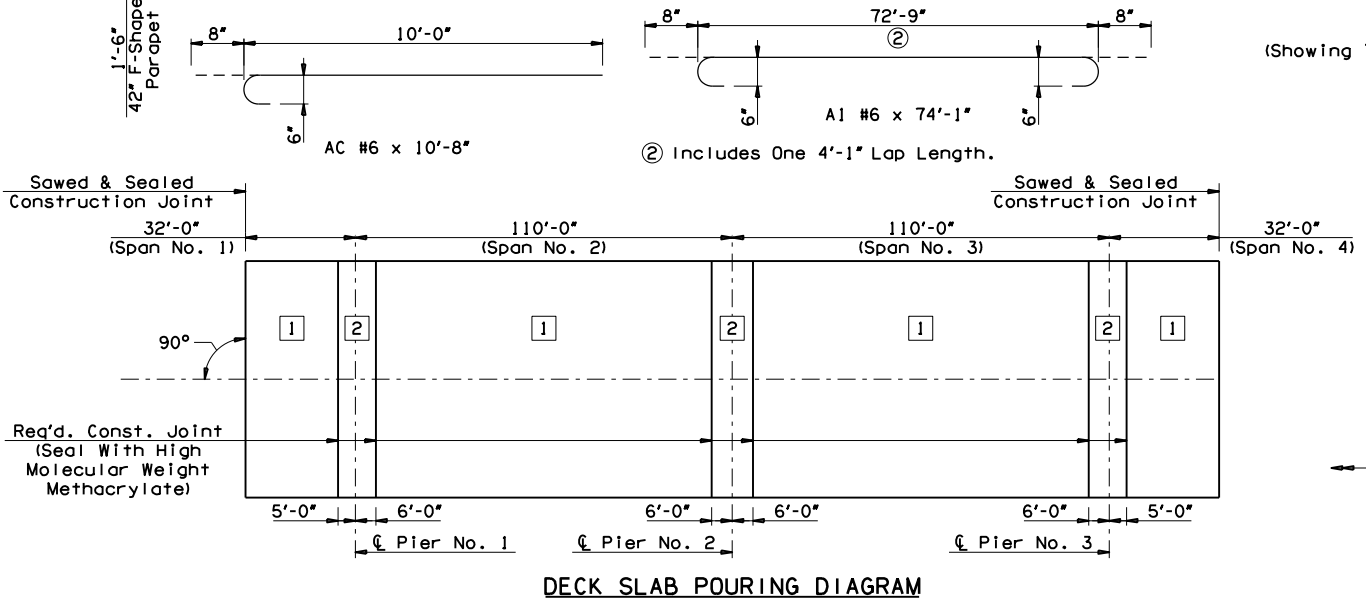


NOTES:
 Sidewalk reinforcing not shown for clarity. See Sheet No. 117.
 42" F-Shaped Parapet reinforcing not shown for clarity. See Sheet No. 121 and Std. FSHP-42-2-00E for details.
 All lap lengths shall be staggered.



BAR LIST - SUPERSTRUCTURE

MARK	SIZE	NO.	FORM	LENGTH
EPOXY COATED REINFORCING STEEL				
A1	#6	568	BENT	74'-1"
AC	#6	1122	BENT	10'-8"
AS	#4	140	BENT	5'-0"
B1	#6	383	STR.	72'-8"
C1	#4	570	BENT	4'-10"
C2	#4	570	STR.	8'-1"
EB1	#5	210	STR.	60'-0"
EB2	#5	140	STR.	60'-0"
EB3	#5	276	STR.	17'-4"
EB4	#5	138	STR.	18'-4"
ET1	#6	264	STR.	60'-0"
ET2	#6	176	STR.	60'-0"
ET3	#6	276	STR.	17'-4"
ET4	#6	138	STR.	18'-4"
FS2	#5	596	BENT	9'-6"

NOTE:
 Primary longitudinal reinforcing shall be continuous through all Construction Joints. Do not lap within 10' of centerline Pier.
 Epoxy-coat or galvanize steel items used to facilitate construction, such as Deck Form Hangers, Ty-Bar Clips, Insert Weld Anchors, or other appurtenances, that will remain in place in the Deck Slab. Epoxy-coat in accordance with AASHTO M284 or galvanize in accordance with AASHTO M111.
 Place Deck Slab concrete one section at a time consistent with the Deck Slab Pouring Sequence Diagram. In the event of an emergency, halt the placement of concrete by forming a Construction Joint made perpendicular to the direction of traffic or as directed by the Engineer. Do not place any heavy equipment on the finished Deck Slab within 5'-0" of any Construction Joint until concrete is in place on both sides of the respective joint and at least 48 hours has elapsed since concrete placement.
 Seal all Deck Slab Construction Joints with High Molecular Weight Methacrylate in accordance with Section 523 of the Specifications. Include all cost of equipment and labor for the installation of the High Molecular Weight Methacrylate Sealer in the contract unit price of "SEALER CRACK PREPARATION". Include all cost of the High Molecular Weight Methacrylate Sealer in the contract unit price of "SEALER RESIN". The Department will not measure the preparation and sealer of emergency construction joints for payment.

NOTE:
 The Deck Slab is divided into sections between Construction Joints as shown. Place the Deck Slab concrete of each section in the numerical sequence indicated. Sections of the Deck Slab with the same number may be placed in any order. Sections in sequence 2 may be placed before all of sequence 1 are completed if sequence 1 at the common joint is complete.

145TH OVER I-44 TULSA & ROGERS COUNTIES DESIGN JMO 1/14
 BRIDGE "A" DETAIL SJL 2/14
 SUPERSTRUCTURE DETAILS (SHEET 1 OF 4) CHECK BRT 3/14
GARVER

STATE OF OKLAHOMA DEPARTMENT OF TRANSPORTATION
 JOB PIECE NO. 21899(04) SHEET NO. 119