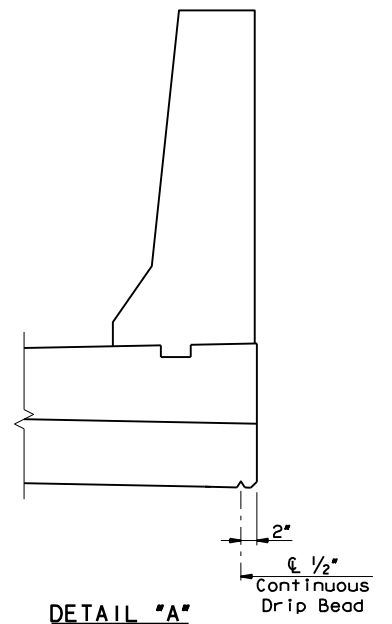


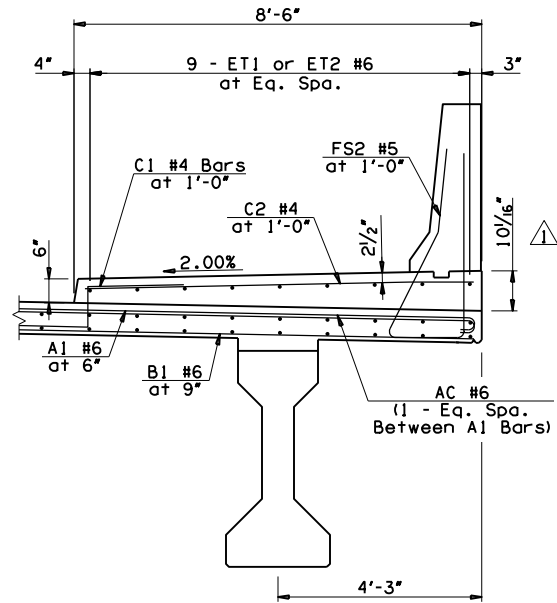
HALF SECTION AT INTERMEDIATE DIAPHRAGM

HALF SECTION AT PIER DIAPHRAGM

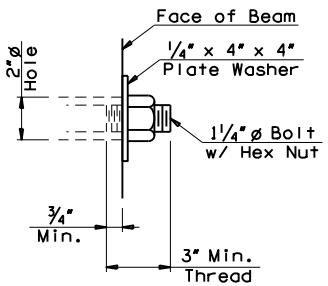
TYPICAL SECTION



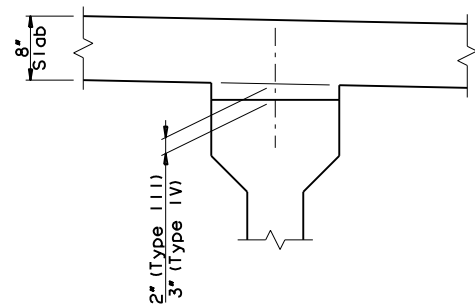
DETAIL "A"



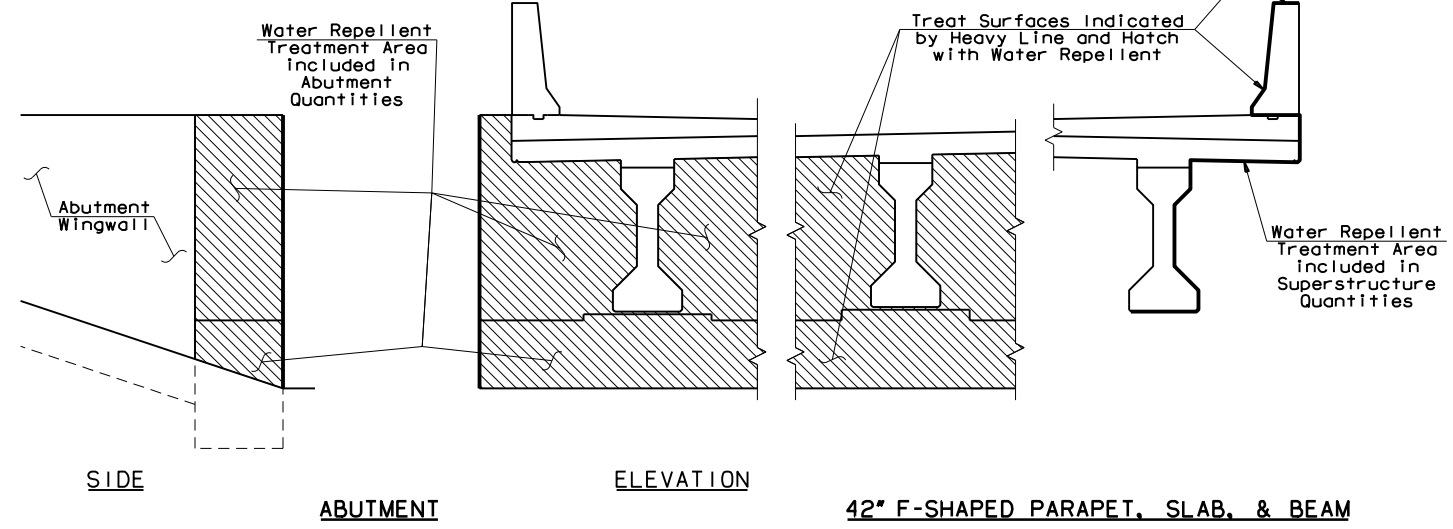
DETAIL "C"



DETAIL "B"



BEAM HAUNCH DETAIL



CONCRETE TREATMENT DETAILS

**DIAPHRAGM BOLT NOTES:**  
 Provide structural steel for Diaphragm Bolts and Plate Washers in accordance with AASHTO M270 (ASTM A709), Grade 50W (Weathering Steel, Charpy V-Notch testing not required). The Contractor may substitute a #10 reinforcing bar in accordance with AASHTO M31, Grade 60, and threaded at the ends as shown for the Diaphragm Bolt at no additional cost to the Department. Provide Hex Nuts in accordance with AASHTO M291 (ASTM A563).  
 Paint exposed Diaphragm Bolt, Plate Washer and Hex Nut with two (2) coats of zinc-rich paint (6 mil minimum thickness) after assembly. Include all cost of Diaphragm Bolt, Plate Washer, and Hex Nut in the contract unit price for "STRUCTURAL STEEL".

SUMMARY OF QUANTITIES - SUPERSTRUCTURE		
ITEM	UNIT	TOTAL
PRESTRESSED CONCRETE BEAMS (TYPE III)	L.F.	440.00
PRESTRESSED CONCRETE BEAMS (TYPE IV)	L.F.	1,535.40
SAW-CUT GROOVING	S.Y.	1,641.00
42" F-SHAPED PARAPET	L.F.	568.00
STRUCTURAL STEEL	LB.	3,126.00
STAINLESS STEEL FIXED BEARING ASSEMBLY	EA.	14.00
WEATHERING STEEL FIXED BEARING ASSEMBLY	EA.	14.00
STAINLESS STEEL EXPANSION BEARING ASSEMBLY	EA.	28.00
ELASTOMERIC BEARING PADS	EA.	42.00
CLASS AA CONCRETE	C.Y.	628.30
EPOXY COATED REINFORCING STEEL	LB.	219,250.00
WATER REPELLENT (VISUALLY INSPECTED)	S.Y.	1,746.00
SEALER CRACK PREPARATION	L.F.	419.40
SEALER RESIN	GAL.	3.60

**NOTES:**  
 For the layout of the reinforcement in the top and bottom of the slab, bar bends & bar lists, see Sheet No. 119.  
 Rotate hooks on A1 & AC Bars to maintain minimum clearance.

145TH OVER I-44 TULSA & ROGERS COUNTIES DESIGN M/J 1/13  
 BRIDGE "A" DETAIL M/J 1/13  
 CHECK BRT 3/14  
**GARVER**