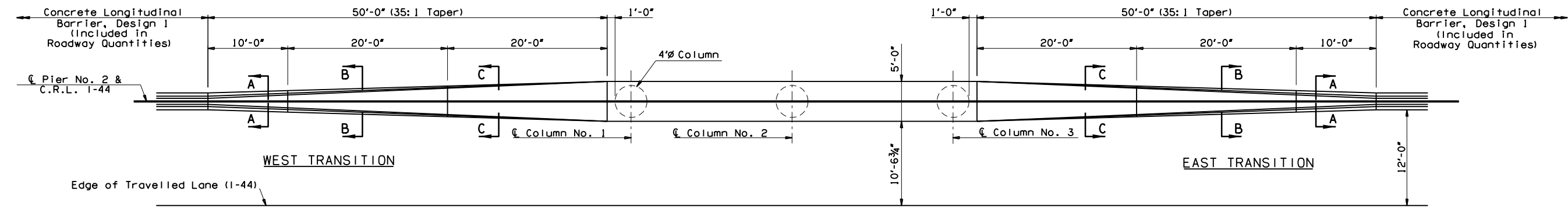
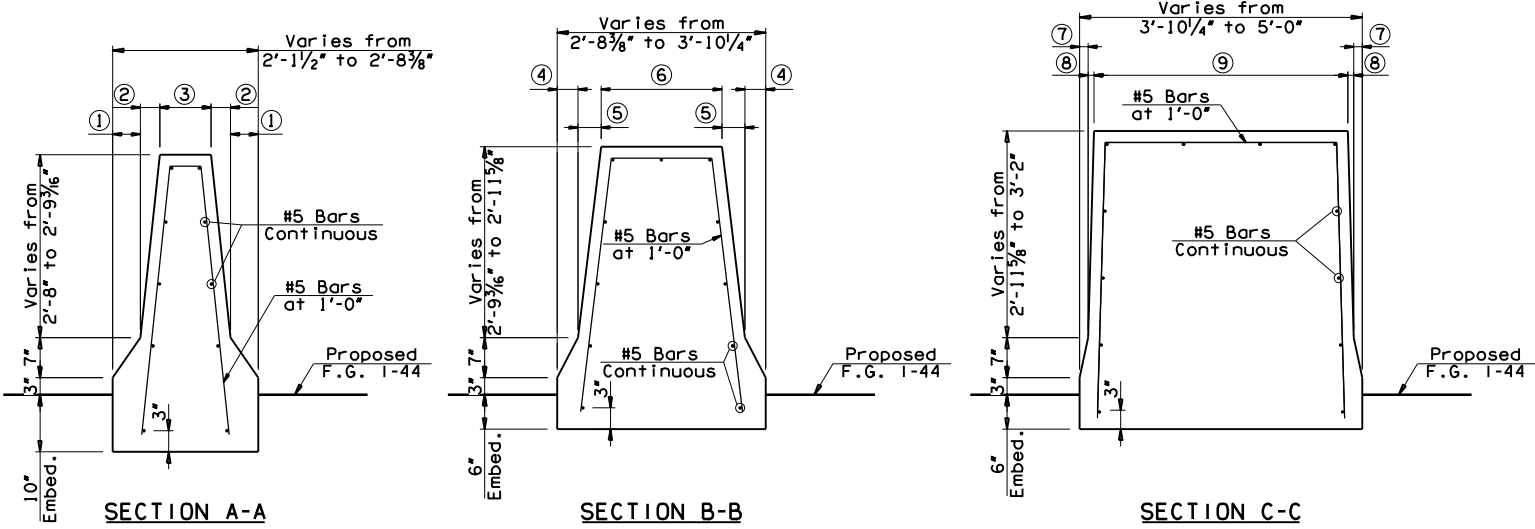


ELEVATION - MEDIAN BARRIER TRANSITION
(Looking Forward Station, North)
(Sta. 779+68.03 to Sta. 780+18.03)
(Sta. 780+64.36 to Sta. 781+14.36)

* Measured from Top of Proposed Pavement to Bottom of Crashwall.

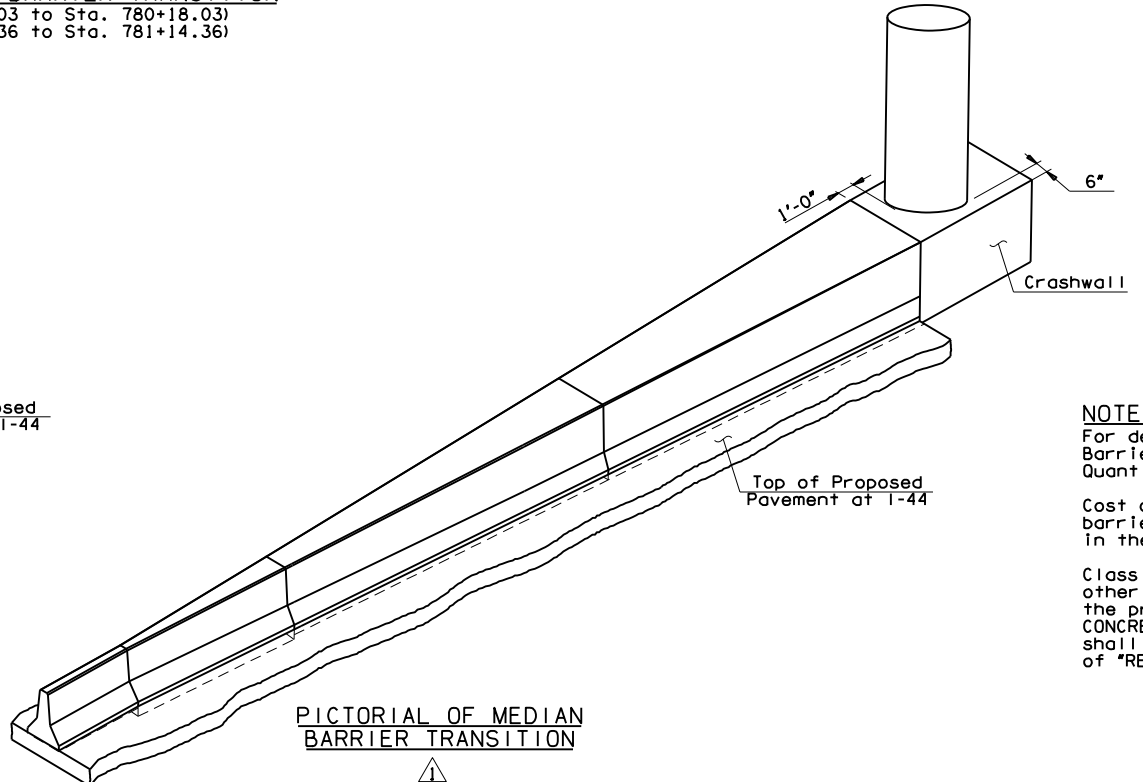


PLAN - MEDIAN BARRIER TRANSITION
(Sta. 779+68.03 to Sta. 780+18.03)
(Sta. 780+64.36 to Sta. 781+14.36)



- ① Varies from 4 7/8" to 3 7/8"
- ② Varies from 3 3/8" to 2 11/16"
- ③ Varies from 9" to 1'-7 7/16"
- ④ Varies from 3 7/8" to 1 15/16"
- ⑤ Varies from 2 11/16" to 1 3/8"
- ⑥ Varies from 1'-7 7/16" to 3'-3 5/16"
- ⑦ Varies from 1 15/16" to 0"
- ⑧ Varies from 1 3/8" to 0"
- ⑨ Varies from 3'-3 5/16" to 5'-0"

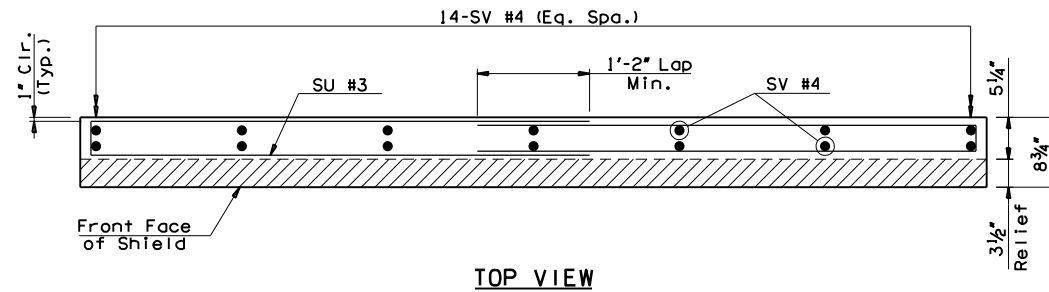
NOTES:
CONSTRUCTION JOINTS:
 Place Construction Joints at the locations shown. Place 1/4" thick preformed expansion material in the Construction Joint in accordance with the details shown. Do not place Longitudinal Reinforcement through a Construction Joint.
CRACK CONTROL JOINTS:
 Provide double 3/4" chamfers or 3/4" deep sawcut in accordance with the details shown. Place Crack Control Joints at the locations shown.
REINFORCING STEEL:
 Provide 3'-7" Lap Splices for Longitudinal #5 Bars where required. All construction and material shall be in accordance with the Standard Specifications.



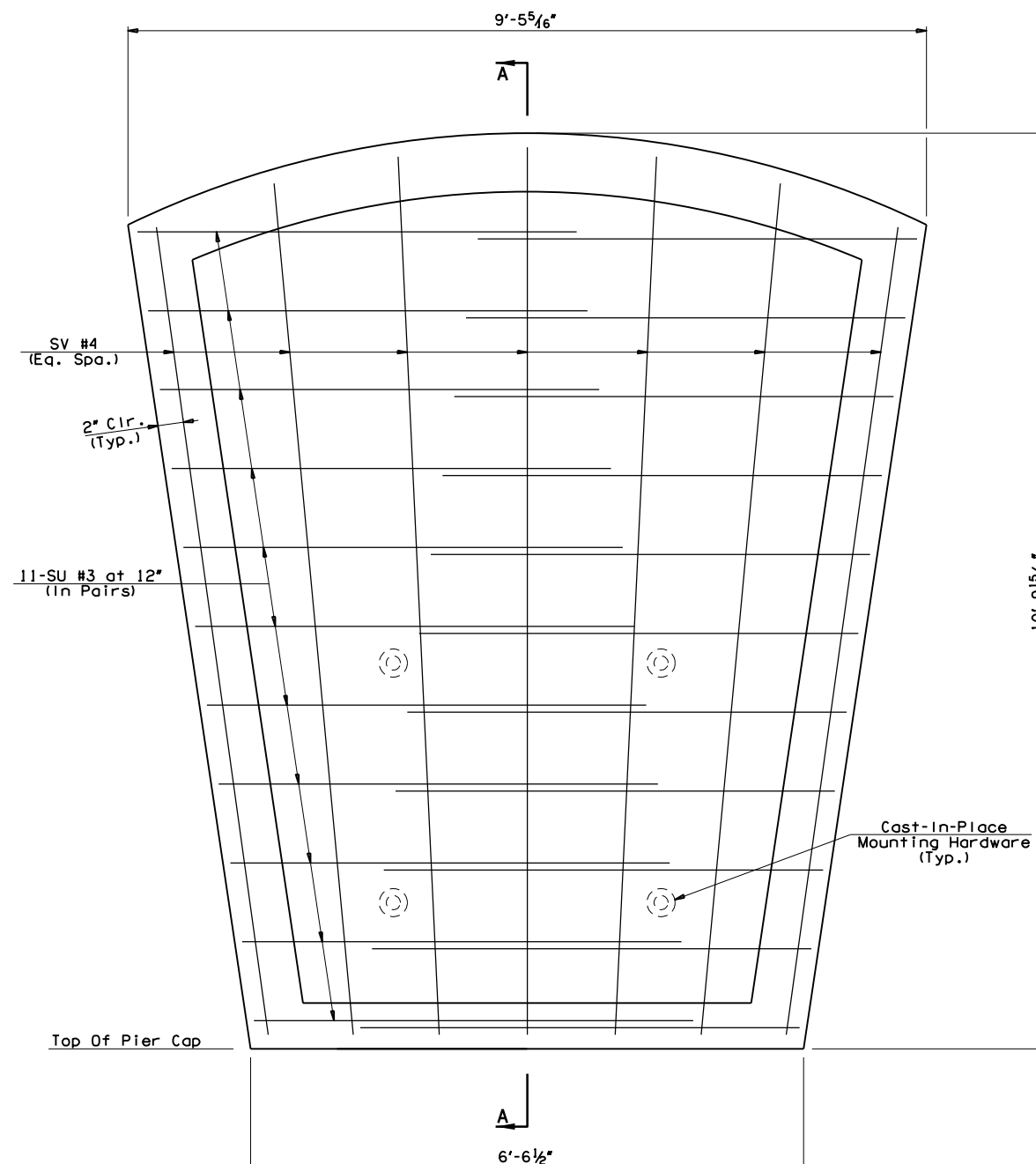
NOTES:
 For details on Concrete Longitudinal Barrier, Design I included in Roadway Quantities, see ODOT Std. CLB-1-2.
 Cost of removal of the existing median barrier at Bridge "A" shall be included in the Roadway Quantities.
 Class A Concrete, Labor, Equipment, and other incidentals shall be included in the price bid per Cubic Yard of "CLASS A CONCRETE". Reinforcing steel and Lap Splices shall be included in the price bid per LB. of "REINFORCING STEEL".

SUMMARY OF QUANTITIES - MEDIAN BARRIER TRANSITION		
ITEM	UNIT	TOTAL
CLASS A CONCRETE	C.Y.	45.70
REINFORCING STEEL	LB.	2,324.00

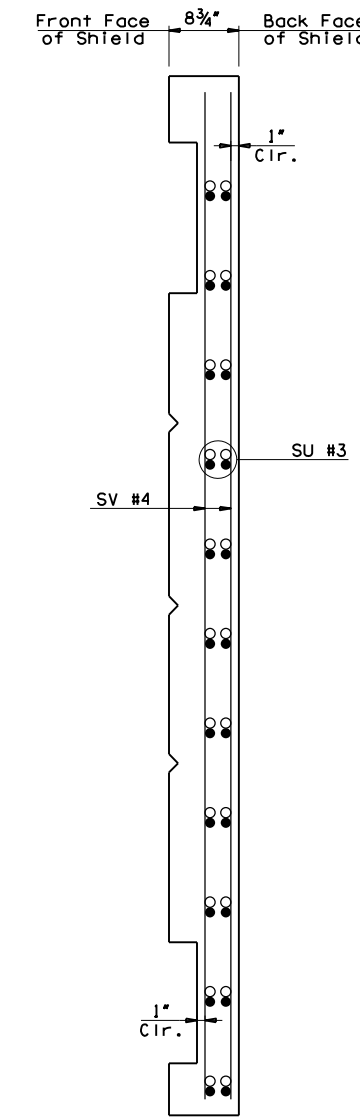
145TH OVER I-44 BRIDGE "A"	TULSA & ROGERS COUNTIES	DESIGN M/J 1/13
MEDIAN BARRIER TRANSITION DETAILS		DETAIL M/J 1/13
		CHECK BRT 3/14
GARVER		
STATE OF OKLAHOMA	DEPARTMENT OF TRANSPORTATION	
JOB PIECE NO. 21899(04)	SHEET NO. 116	



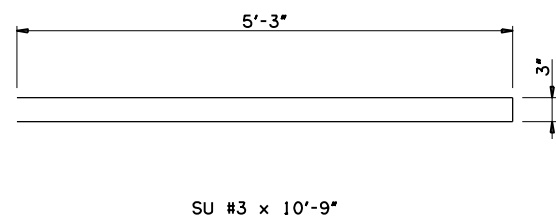
TOP VIEW



ELEVATION OF PEACE SHIELD



SECTION A-A



SU #3 x 10'-9"

NOTES:
Peace shield shall be constructed of Class P concrete with a compressive strength of 6500 psi reinforced with epoxy coated steel.

145TH OVER I-44 BRIDGE 'A'	TULSA & ROGERS COUNTIES	DESIGN	MJY	7/16
		DETAIL	TJH	7/16
		CHECK	MJY	8/16
PIER DETAILS (SHEET 6 OF 6)		GARVER		

STATE OF OKLAHOMA	DEPARTMENT OF TRANSPORTATION
JOB PIECE NO. 21899(04)	SHEET NO. 115B