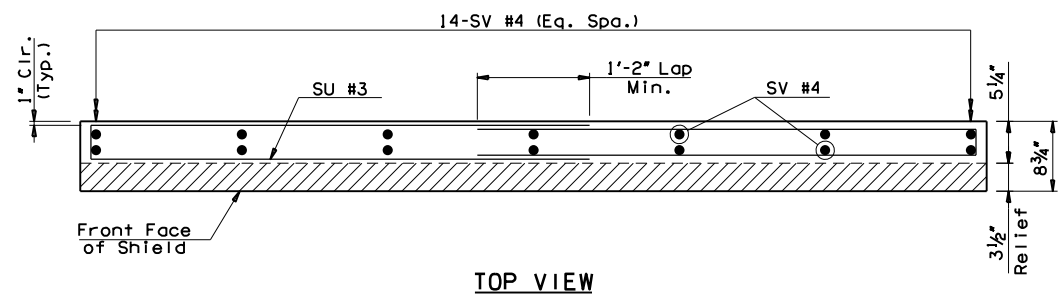
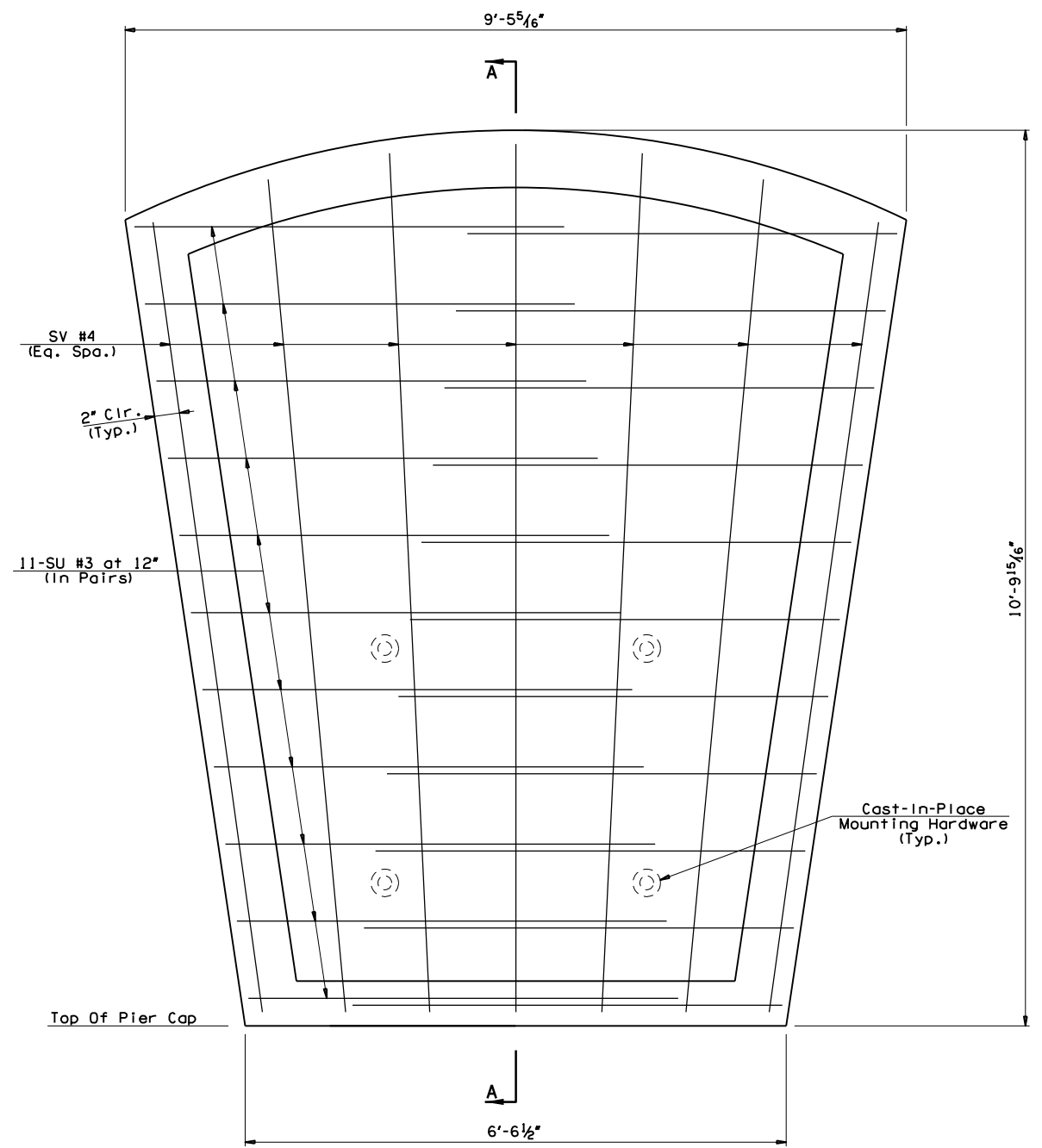


FED. ROAD DIST. NO.	STATE	JOB PIECE NO.	FISCAL YEAR	SHEET NO.	TOTAL SHEETS
6	OKLA.	21899(04)			

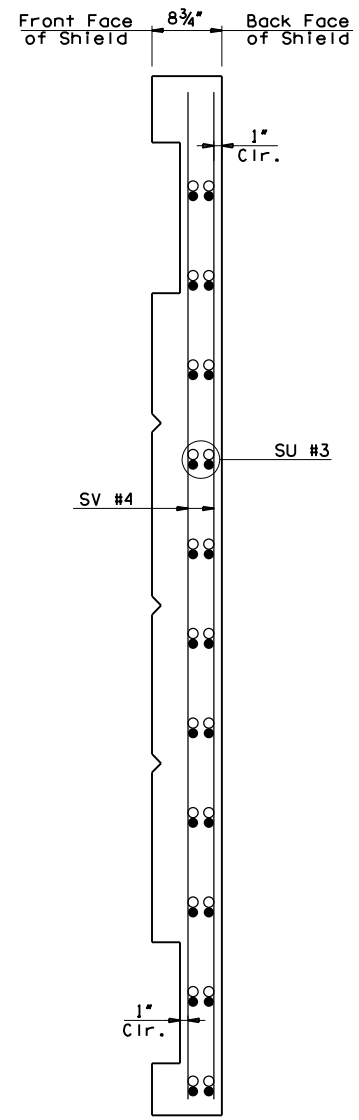
DESCRIPTION	REVISIONS	DATE
Added Sheet		08/22/2016



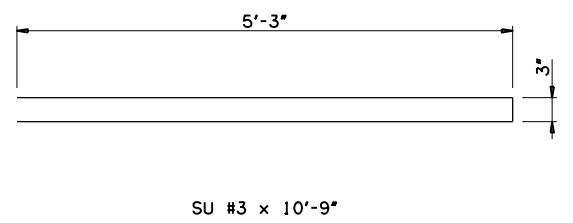
TOP VIEW



ELEVATION OF PEACE SHIELD



SECTION A-A



SU #3 x 10'-9"

NOTES:
Peace shield shall be constructed of Class P concrete with a compressive strength of 6500 psi reinforced with epoxy coated steel.

145TH OVER I-44 BRIDGE 'A'	TULSA & ROGERS COUNTIES	DESIGN	MJY	7/16
		DETAIL	TJH	7/16
		CHECK	MJY	8/16
PIER DETAILS (SHEET 6 OF 6)		GARVER		

STATE OF OKLAHOMA	DEPARTMENT OF TRANSPORTATION
JOB PIECE NO. 21899(04)	SHEET NO. 115B