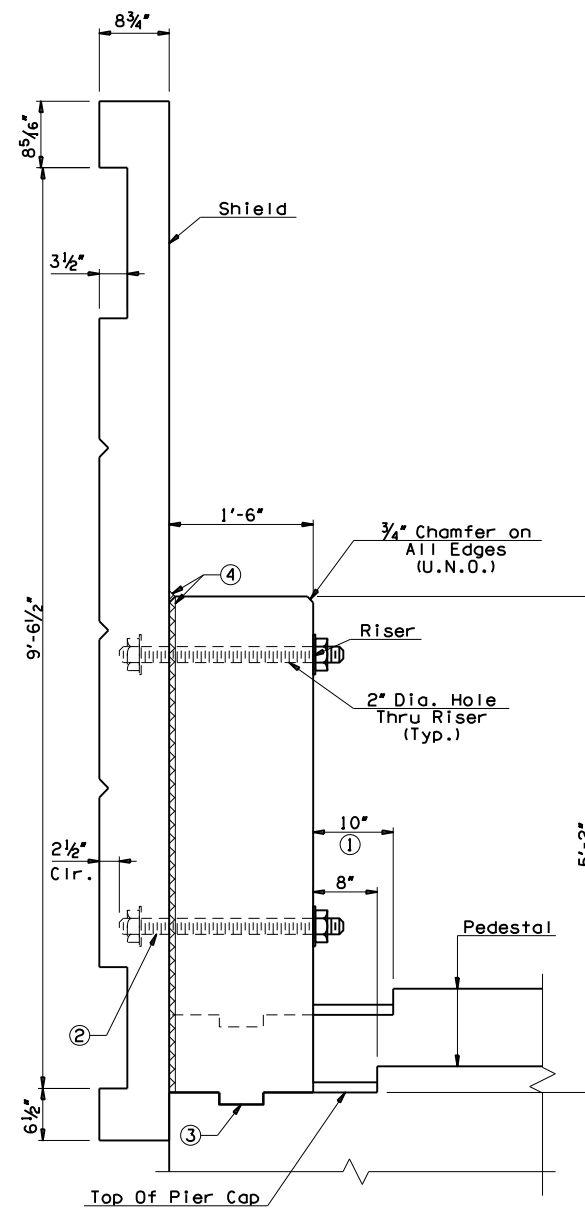
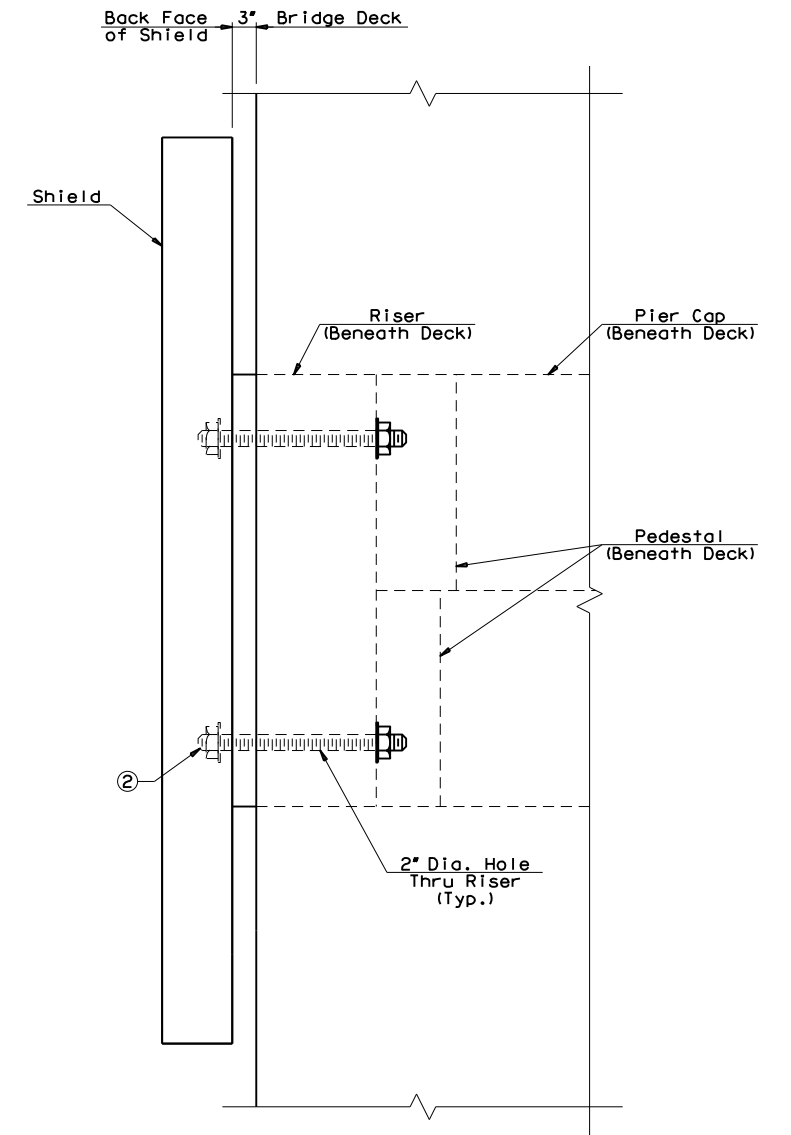


ELEVATION OF PEACE SHIELD
(Pier No. 1 or 3 Shown. Pier No. 2 Similar, But Without Stepped Cap.)



SIDE VIEW OF PEACE SHIELD
(Pier No. 1 or 3 Shown. Pier No. 2 Similar, But Without Stepped Cap.)



CONNECTION PLAN
(Pier No. 1 or 3 Shown. Pier No. 2 Similar, But Without Stepped Cap.)

- ① Split Cap at Pier Nos. 1 & 3 Only.
- ② 1/4" Dia. x 28" Threaded Rod w/A563 Nuts and 4" Dia. Washers. Cast-in-Place in shield. Cost to be included in other items of work.
- ③ 1/2"x5/2" Construction Joint.
- ④ Caulk around edges between riser and shield. Use a caulk that is compatible with coating material. Cost of caulk and materials to be included in other items of work.

145TH OVER I-44 BRIDGE 'A'	TULSA & ROGERS COUNTIES	DESIGN	MJY	7/16
PIER DETAILS (SHEET 5 OF 6)		DETAIL	TJH	7/16
		CHECK	MJY	8/16
STATE OF OKLAHOMA		DEPARTMENT OF TRANSPORTATION		
		JOB PIECE NO. 21899(04)	SHEET NO. 115A	