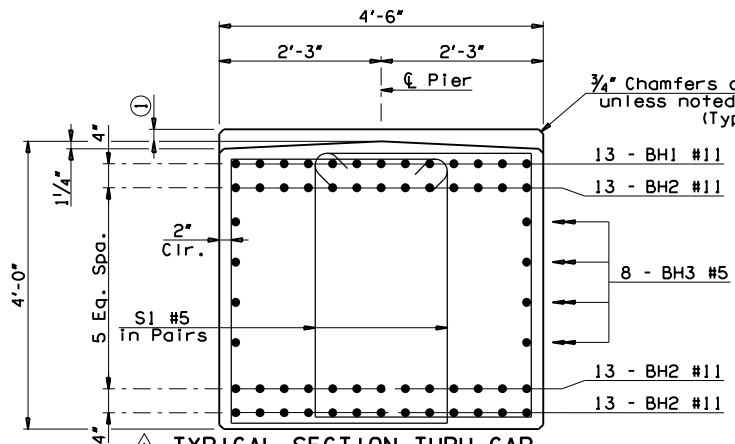
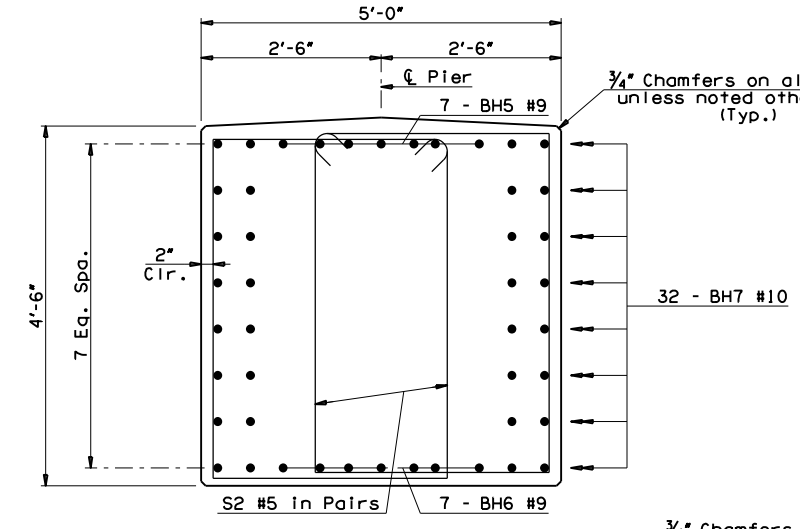


△ DETAILS OF ROLLER INSTALLATION

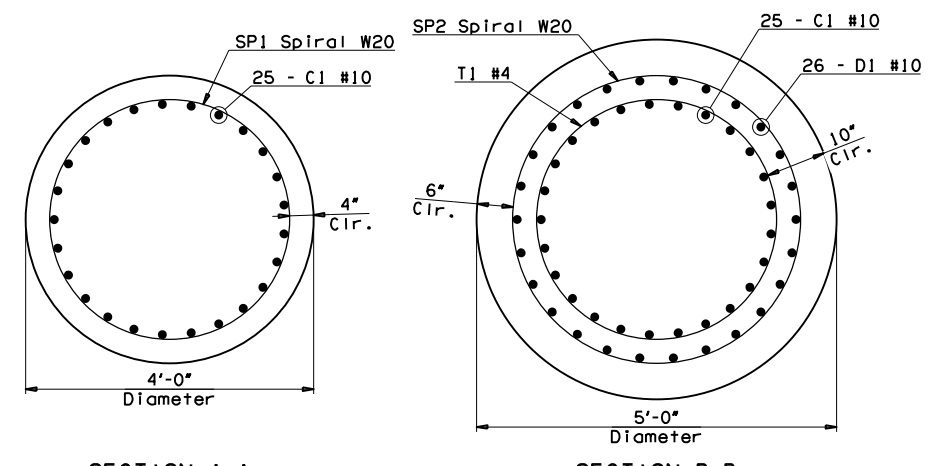


△ TYPICAL SECTION THRU CAP

① 2" Minimum Pedestal.

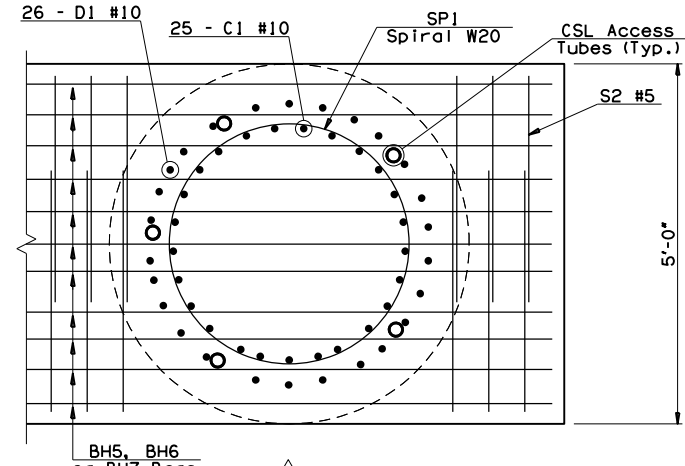


△ TYPICAL SECTION THRU CRASHWALL

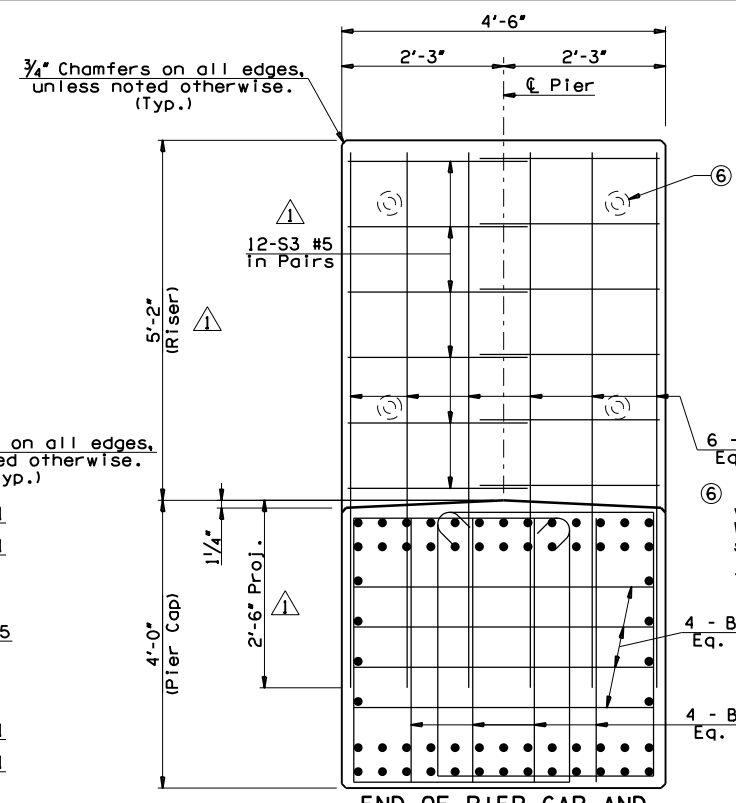


SECTION A-A

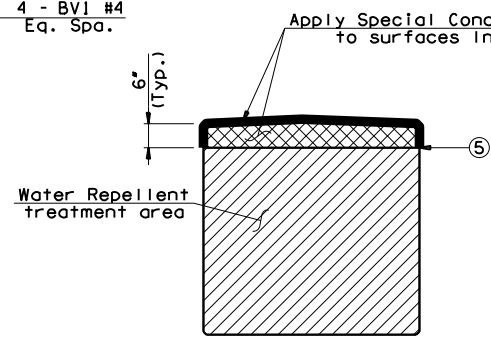
SECTION B-B



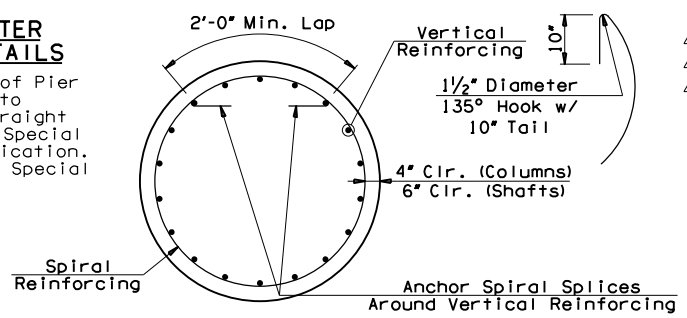
SECTION C-C



△ END OF PIER CAP AND RISER REINFORCING



⑤ Mask sided and ends of Pier Cap along this line to provide a clean, straight finish at bottom of Special Concrete Finish Application. See Sheet No. 14 for Special Concrete Finish Specifications.



△ DETAIL OF SPIRAL REINFORCING STEEL

NOTE:
 Spiral bars shall conform to AASHTO M32. Spiral bar length does not include lap. If lap is required, the length of the lap shall be as shown.

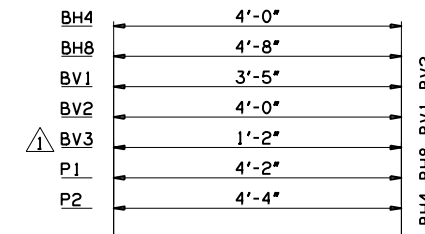
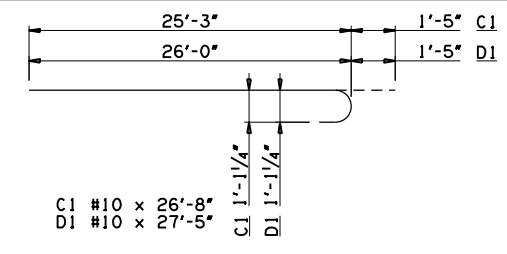
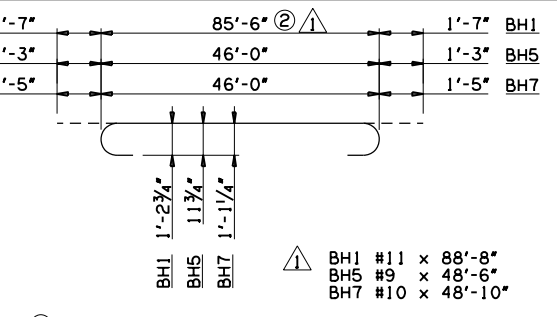
③ 3 DRILLED SHAFTS - PIER 2

MARK	SIZE	NO.	FORM	LENGTH
REINFORCING STEEL				
D1	#10	78	BENT	27'-5"
SP2	W20	3	SPIRAL	565'-11"
T1	#4	27	BENT	12'-6"

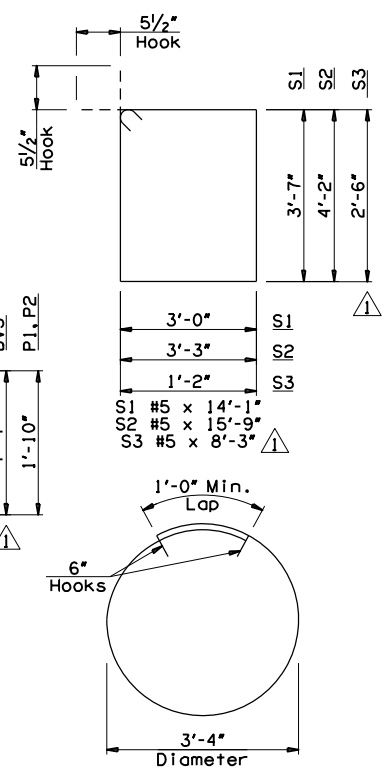
⑤ Included in the price bid per Linear Foot of "DRILLED SHAFTS 60" DIAMETER".

NOTES:

For Pier Nos. 1 & 3 reinforcing details see Sheet Nos. 112 & 113.
 For Pier No. 2 reinforcing details see Sheet No. 114.
 For Crashwall reinforcement details, see Sheet No. 114.
 △ For Aesthetics shield details see Sheet Nos. 115A & 115B.



- △ BH4 #4 x 6'-0"
- △ BH8 #4 x 6'-8"
- △ BV1 #4 x 5'-5"
- △ BV2 #4 x 6'-0"
- △ BV3 #5 x 15'-10"
- △ P1 #4 x 7'-10"
- △ P2 #4 x 8'-0"



BAR LIST - PIER NO. 2

MARK	SIZE	NO.	FORM	LENGTH	LENGTH VARIATION
EPOXY COATED REINFORCING STEEL					
BH1	#11	13	BENT	88'-8"	-
BH2	#11	39	STR.	85'-6"	-
BH3	#5	8	STR.	72'-10"	-
BH4	#4	8	BENT	6'-0"	-
BH5	#9	7	BENT	48'-6"	-
BH6	#9	7	STR.	46'-0"	-
BH7	#10	32	BENT	48'-10"	-
BH8	#4	8	BENT	6'-8"	-
BV1	#4	8	BENT	5'-5"	-
BV2	#4	8	BENT	6'-0"	-
BV3	#5	12	BENT	15'-10"	-
C1	#10	75	BENT	26'-8"	-
P1	#4	35	BENT	7'-10"	-
P2	#4	28	BENT	8'-0"	-
S1	#5	188	BENT	14'-1"	-
S2	#5	140	BENT	15'-9"	-
S3	#5	24	BENT	8'-3"	-
SU	#3	44	BENT	10'-9"	-
SV	#4	28	STR.	10'-1" AVG.	9'-8" TO 10'-6"
REINFORCING STEEL					
SP1	W20	3	SPIRAL	362'-0"	-

③ Includes one 16'-4" lap length.
 ④ Includes one 3'-8" lap length.

SUGGESTED ORDER OF PLACEMENT

D1 Bars, CSL Access Tubes, C1 Bars, SP1 Bars, S2 Bars, BH Bars.
 T1 and SP2 bars not shown for clarity.

145TH OVER I-44 TULSA & ROGERS COUNTIES BRIDGE 'A'
 DESIGN JMO 2/14
 DETAIL SJL 2/14
 CHECK MUY 10/14
 GARVER
 PIER DETAILS (SHEET 4 OF 6)
 STATE OF OKLAHOMA DEPARTMENT OF TRANSPORTATION
 JOB PIECE NO. 21899(04) SHEET NO. 115