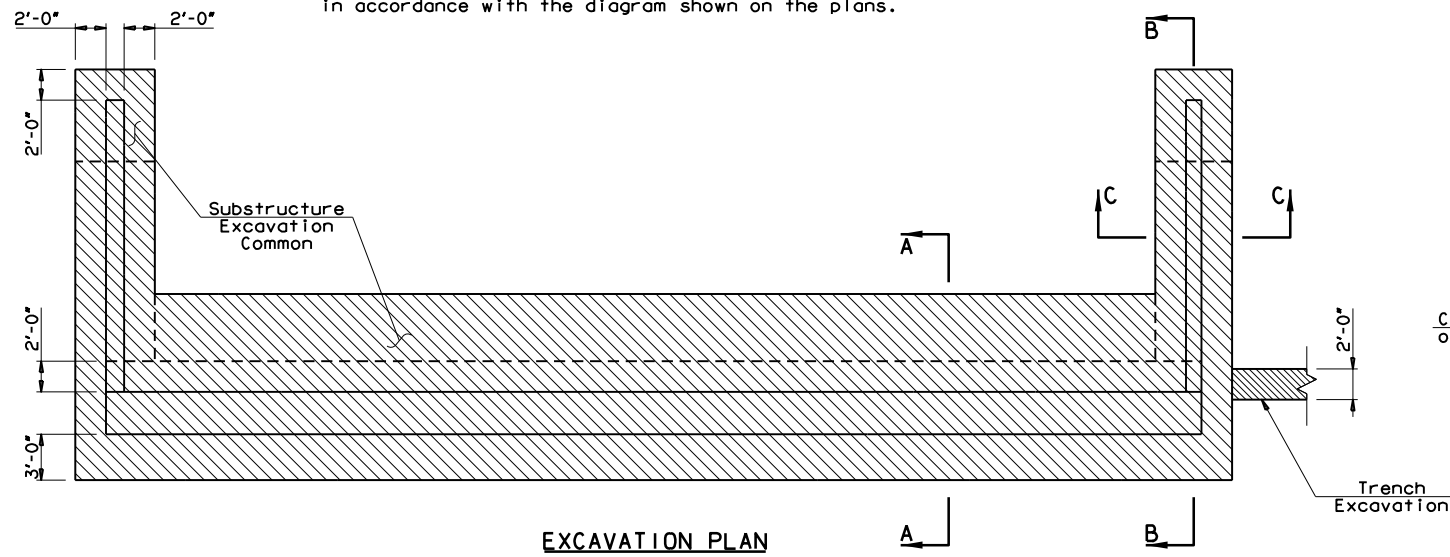


NOTE:

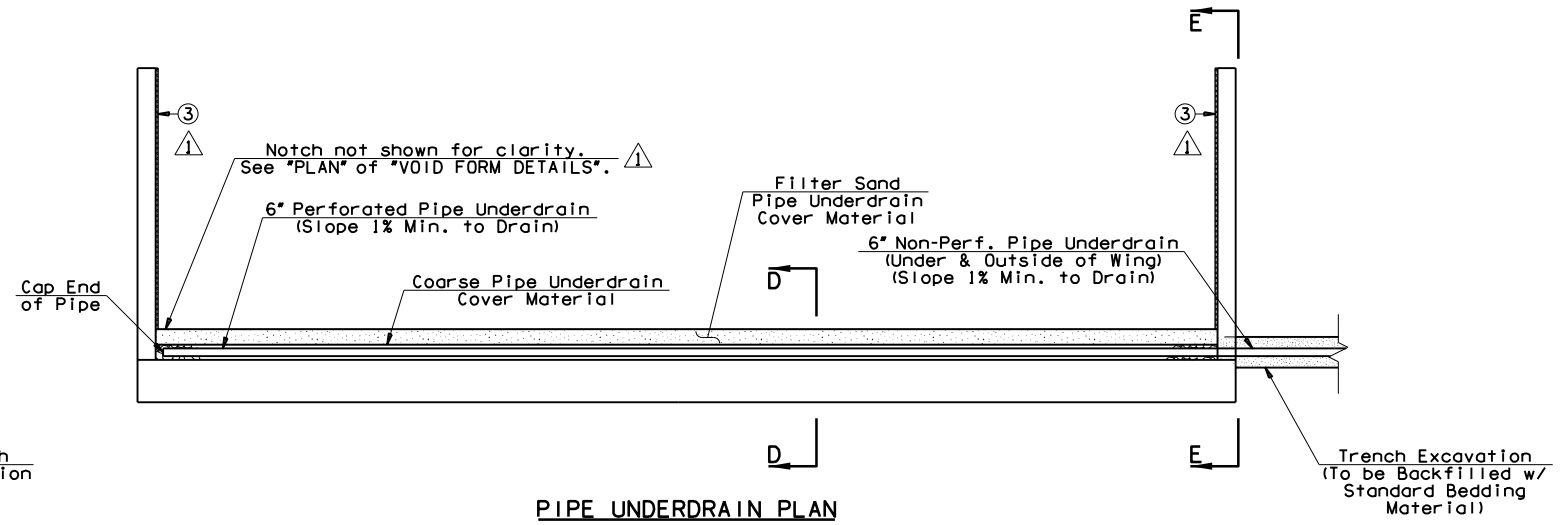
The Contractor may place concrete against the limits of excavation if the material is excavated to the neat lines of the abutment and approved by the Engineer. If necessary, use forms on the back vertical face of the abutment and remove forms after concrete hardens. If the Contractor chooses to place concrete against the soil, the Department will pay for "SUBSTRUCTURE EXCAVATION COMMON" in accordance with the diagram shown on the plans.



EXCAVATION PLAN

NOTE:

The Engineer may adjust the extent, location and depth of 6" Non-Perforated Pipe Underdrain during construction. Include the cost of Pipe Underdrain Cover Material (both Fine Sand and Coarse), Filter Fabric, Trench Excavation, Standard Bedding Material, and equipment and labor for their installation in the contract unit price of "6" PERFORATED PIPE UNDERDRAIN ROUND" and "6" NON-PERF. PIPE UNDERDRAIN RND.". Install as shown on the plans and on Std. PUD-3-2.

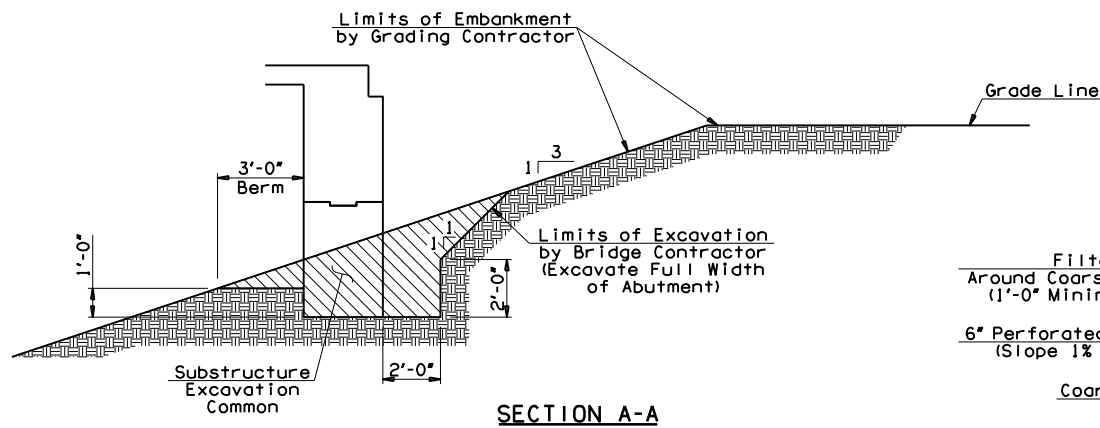


PIPE UNDERDRAIN PLAN

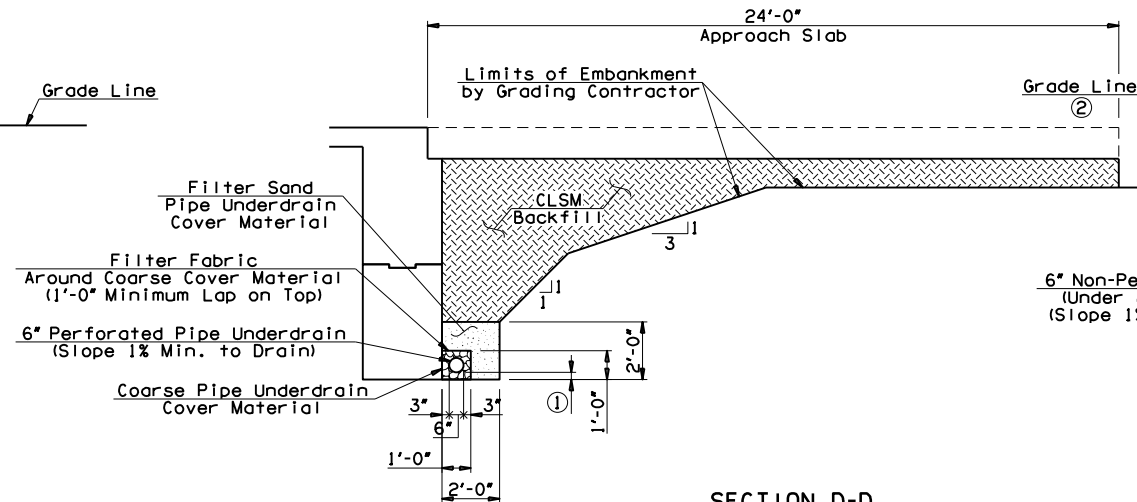
Do not place CLSM Backfill until Superstructure is in place and the Abutment Wing Concrete has attained a strength of 3,000 psi.

① Set bottom of pipe 3" above the bottom of the abutment at the low end.

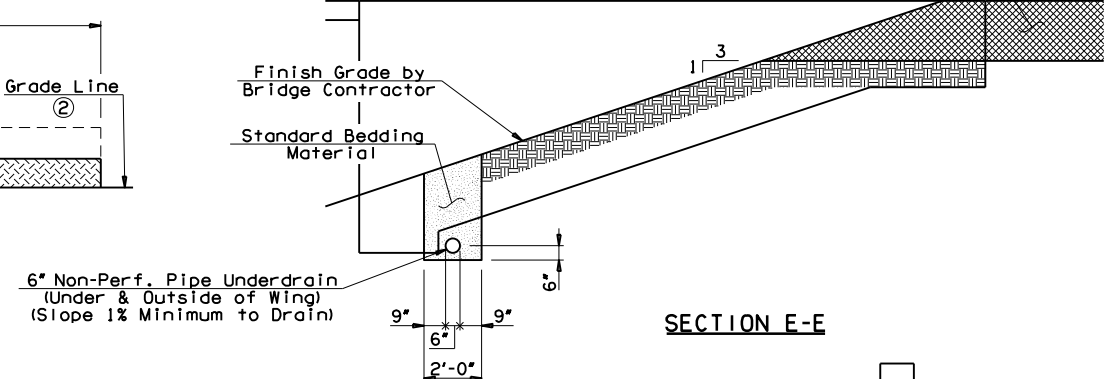
② Grade Line assumed to be located 1'-0" below bottom of Approach Slab for computing CLSM Backfill quantity shown on the plans. The Department will pay for CLSM Backfill in accordance with the plan quantity and no adjustment will be made for actual location of Grade Line.



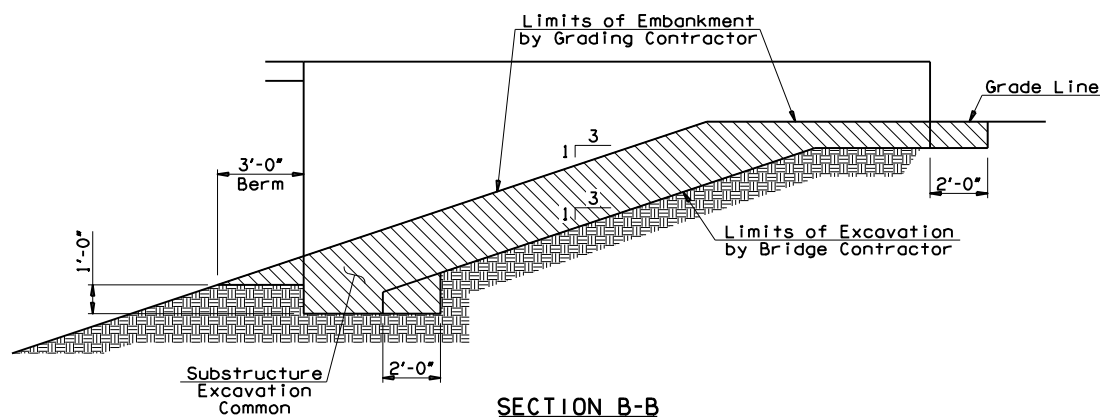
SECTION A-A



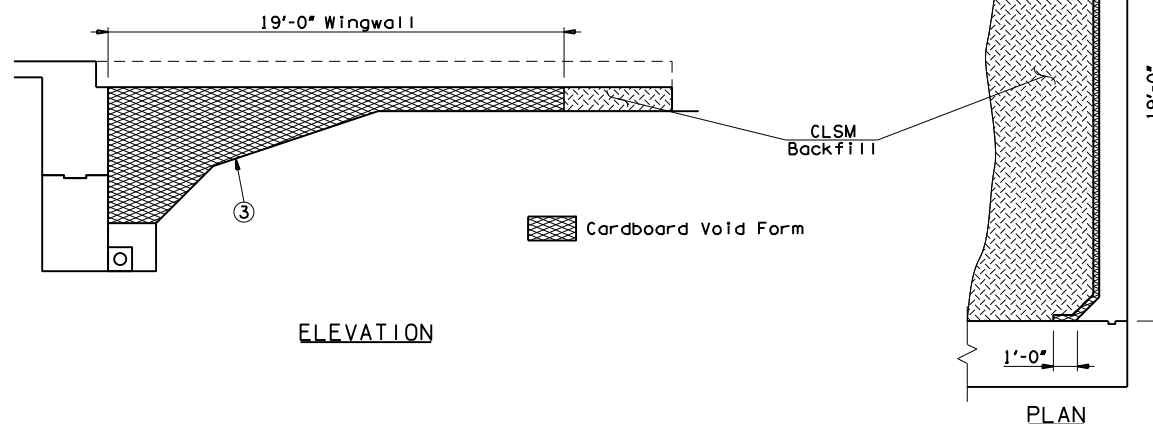
SECTION D-D



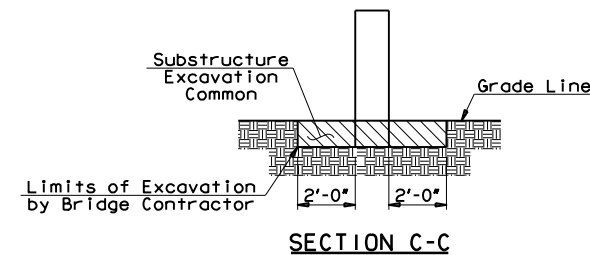
SECTION E-E



SECTION B-B



ELEVATION



SECTION C-C

③ 1" Cardboard Void Form. The Void Form shall be able to withstand crushing due to pouring and curing of CLSM Backfill and maintain 1" void. Cost to be included in other items of work.

The Cardboard Void Form shall provide a temporary support during placement of the CLSM. After the CLSM can support foot traffic the Void Form shall lose strength and create a 1" space in place of the Void Form such as Separator Void as manufactured by SureVoid Products or an approved equal. Product information for Separator Void can be obtained from SureVoid Products of Englewood, Colorado, phone number 800-458-5444.

VOID FORM DETAILS

145TH OVER I-44 BRIDGE 'A'	TULSA & ROGERS COUNTIES	DESIGN	JMO	3/14
SUBSTRUCTURE EXCAVATION AND PIPE UNDERDRAIN ASSEMBLY DETAILS		DETAIL	SJL	3/14
		CHECK	BRT	3/14
		GARVER		
STATE OF OKLAHOMA		DEPARTMENT OF TRANSPORTATION		
JOB PIECE NO. 21899(04)		SHEET NO. 111		