

BAR LIST - ABUTMENTS (ONE SHOWN, TWO REQUIRED)					
MARK	SIZE	NO.	FORM	LENGTH	LENGTH VARIATION
EPOXY COATED REINFORCING STEEL					
BH1	#8	8	STR.	79'-5"	-
BH2	#5	12	STR.	74'-10"	-
BH3	#4	36	BENT	3'-7"	-
BH4	#6	14	BENT	11'-9"	-
BS1	#4	72	BENT	12'-9"	-
BV1	#6	141	STR.	7'-0"	-
P1	#4	35	BENT	5'-5"	-
P2	#4	28	BENT	6'-8"	-
WT1	#4	2	BENT	5'-2"	-
WT2	#8	2	BENT	11'-3"	-
WT3	#4	10	STR.	7'-7" AVG.	4'-1" TO 11'-1"
WT4	#8	10	BENT	8'-11" AVG.	5'-5" TO 12'-5"
WT8	#6	8	BENT	10'-2"	-

- ① Includes One 8'-3" Lap Length. Laps shall be staggered.
- ② Includes One 3'-8" Lap Length. Laps shall be staggered.

ABUTMENT TABLE OF VARIABLES					
ABUTMENT	ELEV. "A"	ELEV. "B"	ELEV. "C"	ELEV. "D"	ELEV. "E"
1	718.87	719.08	719.28	719.48	718.71
2	718.84	719.04	719.24	719.44	718.67

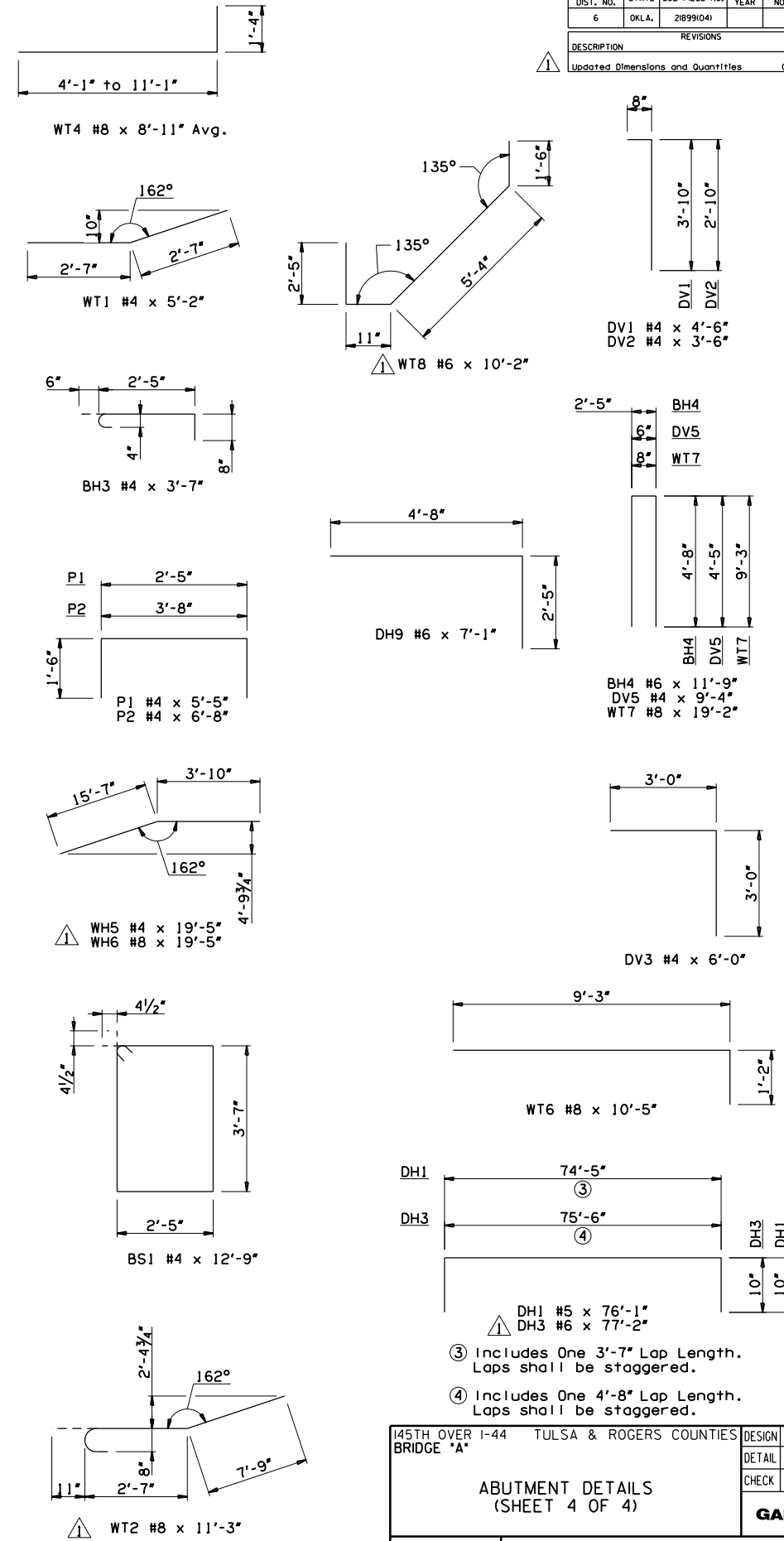
NOTES:
 For Abutment Seat reinforcing see Sheet No. 107.
 For Wing Wall reinforcing see Sheet No. 108.
 For Abutment Diaphragm reinforcing see Sheet No. 109.

BAR LIST - WING WALLS (ONE SHOWN, FOUR REQUIRED)					
MARK	SIZE	NO.	FORM	LENGTH	LENGTH VARIATION
EPOXY COATED REINFORCING STEEL					
WH1	#4	6	STR.	18'-8"	-
WH2	#8	6	STR.	18'-8"	-
WH3	#4	4	STR.	11'-7 1/2" AVG.	9'-6" TO 13'-9"
WH4	#8	4	STR.	11'-7 1/2" AVG.	9'-6" TO 13'-9"
WH5	#4	1	BENT	19'-5"	-
WH6	#8	1	BENT	19'-5"	-
WV1	#4	30	STR.	5'-3" AVG.	3'-0" TO 7'-6"
WV2	#4	10	STR.	2'-7"	-
WV3	#4	1	STR.	6'-6"	-
WV4	#4	1	STR.	6'-3"	-

BAR LIST - ABUTMENT DIAPHRAGMS (ONE SHOWN, TWO REQUIRED)					
MARK	SIZE	NO.	FORM	LENGTH	LENGTH VARIATION
EPOXY COATED REINFORCING STEEL					
DH1	#5	5	BENT	76'-1"	-
DH2	#5	6	STR.	8'-5"	-
DH3	#6	2	BENT	77'-2"	-
DH4	#5	6	STR.	8'-6"	-
DH5	#5	6	STR.	5'-9"	-
DH6	#5	2	STR.	4'-4"	-
DH7	#5	2	STR.	4'-4"	-
DH8	#5	2	STR.	3'-0"	-
DH9	#6	14	BENT	7'-1"	-
DV1	#4	74	BENT	4'-6"	-
DV2	#4	69	BENT	3'-6"	-
DV3	#4	70	BENT	6'-0"	-
DV4	#4	4	STR.	4'-5"	-
DV5	#4	6	BENT	9'-4"	-
WT5	#4	14	STR.	9'-3"	-
WT6	#8	14	BENT	10'-5"	-
WT7	#8	6	BENT	19'-2"	-
WT8	#6	8	BENT	10'-2"	-

- ③ Includes One 3'-7" Lap Length. Laps shall be staggered.
- ④ Includes One 4'-8" Lap Length. Laps shall be staggered.

SUMMARY OF QUANTITIES - ABUTMENTS			
ITEM	UNIT	TOTAL	
SUBSTRUCTURE EXCAVATION COMMON	C.Y.	115.70	
CLSM BACKFILL	C.Y.	251.00	
CLASS A CONCRETE	C.Y.	77.60	
EPOXY COATED REINFORCING STEEL	LB.	19,607.00	
PILES, FURNISHED (HP 10x42)	L.F.	648.00	
PILES, DRIVEN (HP 10x42)	L.F.	648.00	
(PL) PILOT HOLES	L.F.	600.00	
PILE SPLICE (NON-BIDDABLE)	EA.	1.00	
WATER REPELLENT (VISUALLY INSPECTED)	S.Y.	106.00	
6" PERFORATED PIPE UNDERDRAIN ROUND	L.F.	138.00	
6" NON-PERFORATED PIPE UNDERDRAIN ROUND	L.F.	18.00	



- ③ Includes One 3'-7" Lap Length. Laps shall be staggered.
- ④ Includes One 4'-8" Lap Length. Laps shall be staggered.

145TH OVER I-44 TULSA & ROGERS COUNTIES		DESIGN	JMO	3/14
BRIDGE "A"		DETAIL	SJL	3/14
		CHECK	MJY	10/14
ABUTMENT DETAILS (SHEET 4 OF 4)				
GARVER				
STATE OF OKLAHOMA		DEPARTMENT OF TRANSPORTATION		
		JOB PIECE NO. 21899(04)		SHEET NO. 110