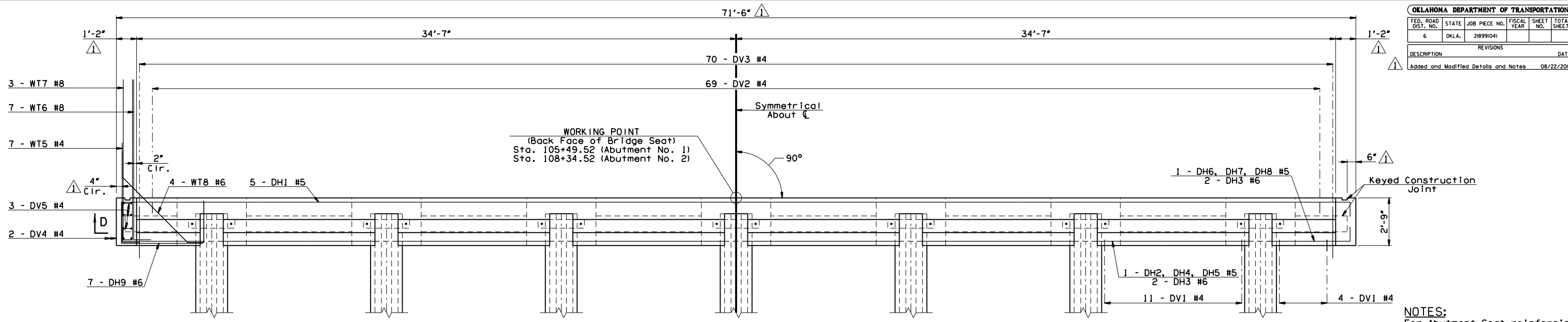
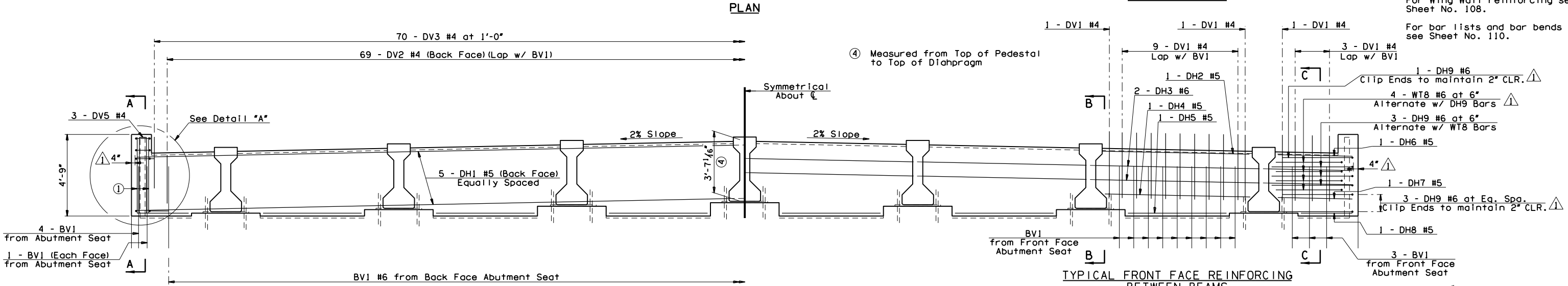


OKLAHOMA DEPARTMENT OF TRANSPORTATION						
FED. ROAD DIST. NO.	STATE	JOB PIECE NO.	FISCAL YEAR	SHEET NO.	TOTAL SHEETS	DATE
6	OKLA.	2899(04)				08/22/2016
DESCRIPTION		REVISIONS		DATE		
Added and Modified Details and Notes				08/22/2016		



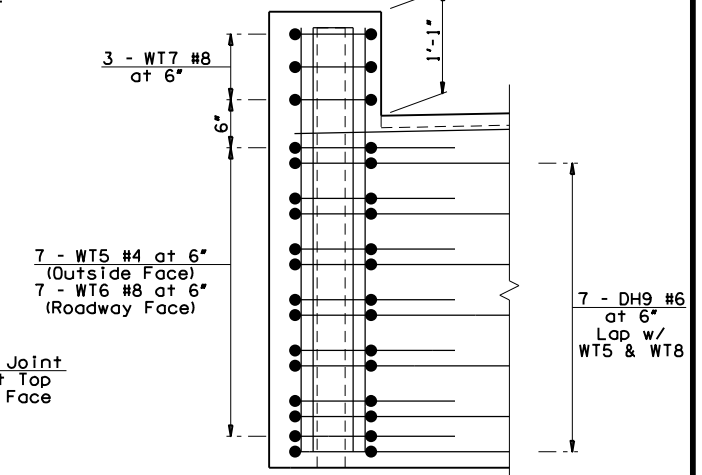
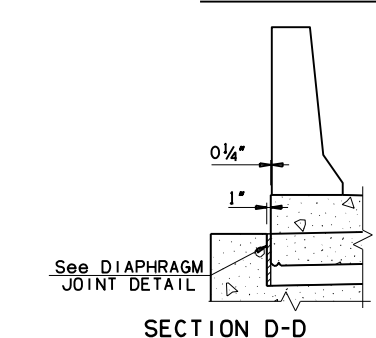
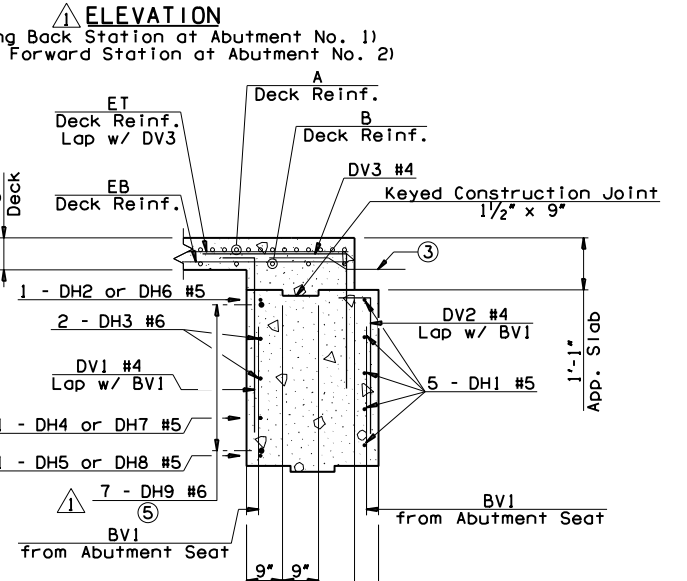
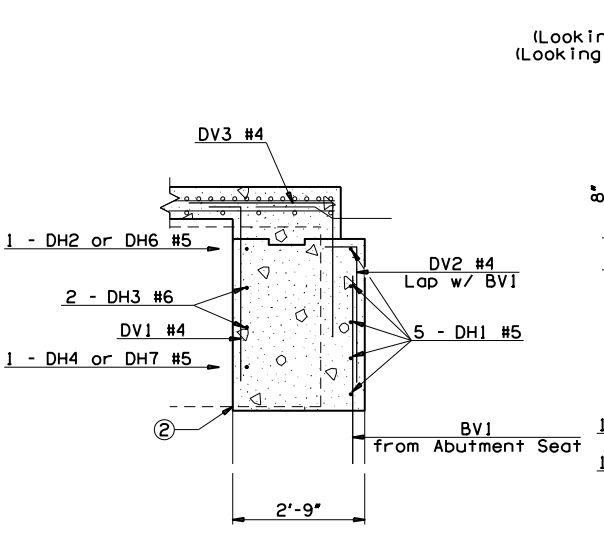
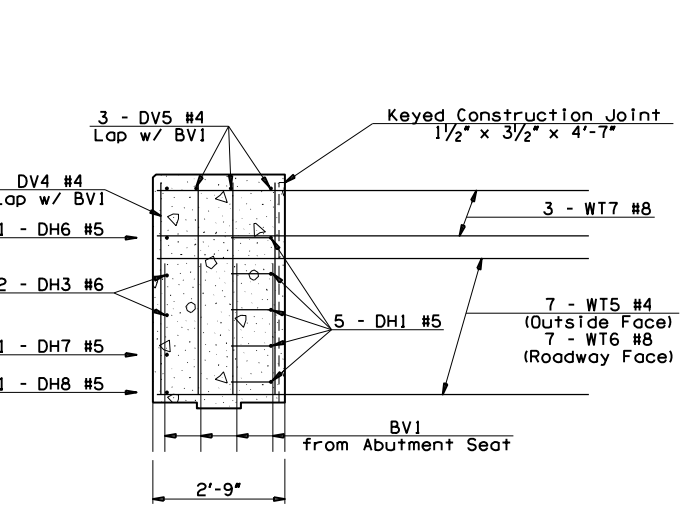
TYPICAL FRONT FACE REINFORCING BETWEEN BEAMS

NOTES:
For Abutment Seat reinforcing see Sheet No. 107.
For Wing Wall reinforcing see Sheet No. 108.
For bar lists and bar bends see Sheet No. 110.



TYPICAL FRONT FACE REINFORCING BETWEEN BEAMS

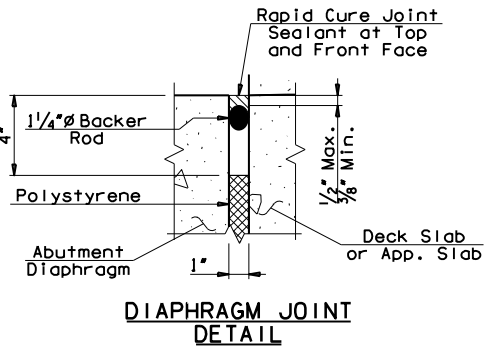
① 2 - DV4 #4 (Front Face) Lap w/ BV1



② Completely fill void in Abutment Diaphragm directly under beam with silicone to seal the exposed edge of the Anchor Plate. Include all costs to install the silicone in other items of work.

⑤ Clip Clip Ends or Alternate Bars as noted in Elevation.

③ AS #4 Tie to Top Reinforcing in Deck Slab and Bottom Reinforcing in App. Slab (Place Bottom Leg of AS thru joint).



145TH OVER I-44 BRIDGE "A"	TULSA & ROGERS COUNTIES	DESIGN JMO 3/14
		DETAIL SJL 3/14
		CHECK MJY 10/14
ABUTMENT DETAILS (SHEET 3 OF 4)		
GARVER		
STATE OF OKLAHOMA	DEPARTMENT OF TRANSPORTATION	JOB PIECE NO. 21899(04) SHEET NO. 109