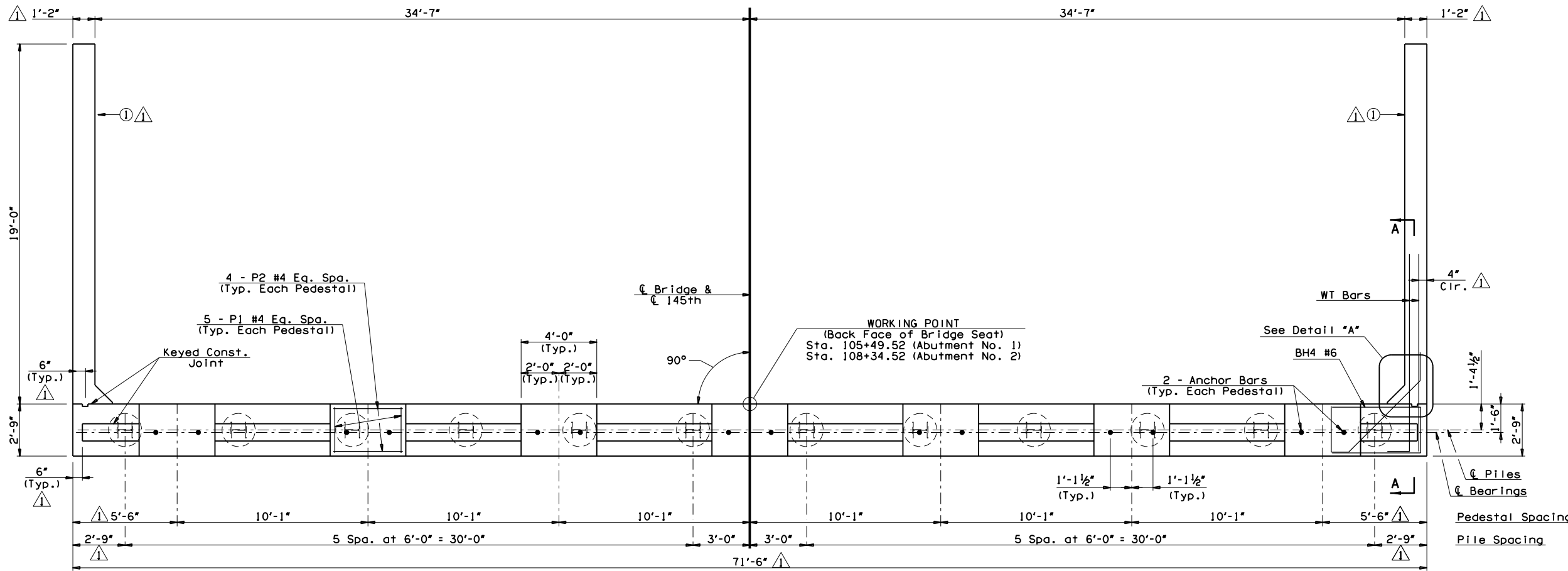
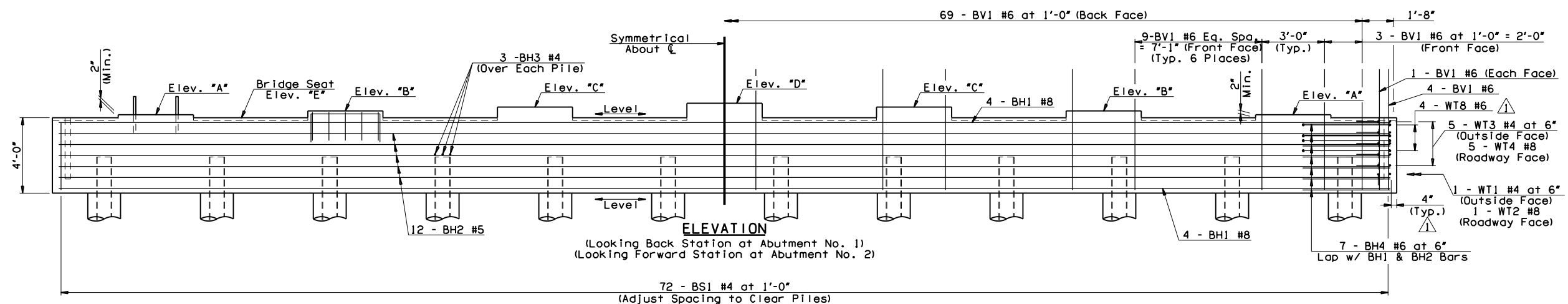


| OKLAHOMA DEPARTMENT OF TRANSPORTATION |       |               |             |           |              |            |
|---------------------------------------|-------|---------------|-------------|-----------|--------------|------------|
| FED. ROAD DIST. NO.                   | STATE | JOB PIECE NO. | FISCAL YEAR | SHEET NO. | TOTAL SHEETS | DATE       |
| 6                                     | OKLA. | 2899(04)      |             |           |              | 08/22/2016 |
| DESCRIPTION                           |       |               | REVISIONS   |           | DATE         |            |
| Added Reinforcing and Details         |       |               |             |           |              | 08/22/2016 |



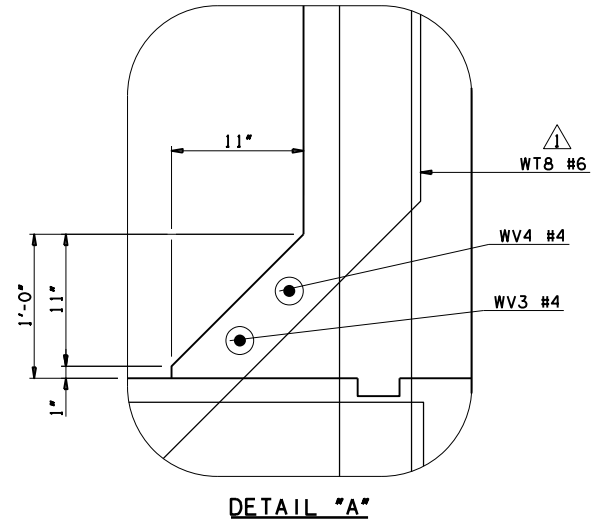
PLAN



ELEVATION

(Looking Back Station at Abutment No. 1)  
(Looking Forward Station at Abutment No. 2)

72 - BS1 #4 at 1'-0"  
(Adjust Spacing to Clear Piles)



DETAIL "A"

**NOTES:**  
 Abutment piles shall be oriented such that the face of the web is parallel with the face of the bridge seat.  
 Place all WT Wing Wall reinforcing tied to Abutment Seat reinforcing before placing Abutment Seat concrete.  
 Do not place Wing Wall concrete until concrete for the Abutment Diaphragm and Deck Slab has attained a strength of 3,000 p.s.i.  
 For SECTION A-A, typical section thru Bridge Seat, and Wing Wall reinforcing details, see Sheet No. 108.  
 For Abutment Diaphragm reinforcing details see Sheet No. 109.  
 For bar lists, bar bends, and table of variables, see Sheet No. 110.

⚠ For Void Form details see Sheet No. 111.

|                                    |                         |                              |     |               |
|------------------------------------|-------------------------|------------------------------|-----|---------------|
| 145TH OVER I-44<br>BRIDGE "A"      | TULSA & ROGERS COUNTIES | DESIGN                       | JMO | 3/14          |
|                                    |                         | DETAIL                       | SJL | 3/14          |
|                                    |                         | CHECK                        | MJY | 10/14         |
| ABUTMENT DETAILS<br>(SHEET 1 OF 4) |                         | <b>GARVER</b>                |     |               |
| STATE OF OKLAHOMA                  |                         | DEPARTMENT OF TRANSPORTATION |     |               |
|                                    |                         | JOB PIECE NO. 21899(04)      |     | SHEET NO. 107 |