

SUMMARY OF QUANTITIES						
ITEM	UNIT	ABUTMENTS	PIERS	SUPER-STRUCTURE	APPROACH SLABS	TOTAL
SUBSTRUCTURE EXCAVATION COMMON	CY	115.70				115.70
CLSM BACKFILL	CY	251.00				251.00
PRESTRESSED CONCRETE BEAMS (TYPE III)	LF			440.00		440.00
PRESTRESSED CONCRETE BEAMS (TYPE IV)	LF			1,535.40		1,535.40
APPROACH SLAB	SY				368.00	368.00
SAW-CUT GROOVING	SY			1,641.00	277.60	1,918.60
42" F-SHAPED PARAPET	LF			568.00	96.00	664.00
STRUCTURAL STEEL	LB			3,126.00		3,126.00
STAINLESS STEEL FIXED BEARING ASSEMBLY	EA			14.00		14.00
WEATHERING STEEL FIXED BEARING ASSEMBLY	EA			14.00		14.00
STAINLESS STEEL EXPANSION BEARING ASSEMBLY	EA			28.00		28.00
ELASTOMERIC BEARING PADS	EA			42.00		42.00
SPECIAL CONCRETE FINISH	SY		166.000			166.000
CLASS P CONCRETE	CY		13.736			13.73
CLASS AA CONCRETE	CY			628.30		628.30
CLASS A CONCRETE	CY	77.60	282.90			360.50
SLOPE WALL (5")	SY	2,872.30				2,872.30
REINFORCING STEEL	LB		4,231.00			4,231.00
EPOXY COATED REINFORCING STEEL	LB	19,607.00	103,672.00	219,250.00		342,529.00
PILES, FURNISHED (HP 10X42)	LF	648.00				648.00
PILES, DRIVEN (HP 10X42)	LF	648.00				648.00
(PL) PILOT HOLES	LF	600.00				600.00
PILE SPLICE, H-PILE (NON-BIDDABLE)	EA	1.00				1.00
WATER REPELLENT (VISUALLY INSPECTED)	SY	106.00	253.00	1,746.00	164.00	2,269.00
DRILLED SHAFTS 60" DIAMETER	LF		192.00			192.00
CROSSHOLE SONIC LOGGING	EA		3.00			3.00
SEALER CRACK PREPARATION	LF			419.40		419.40
SEALER RESIN	GAL			3.60		3.60
6" PERFORATED PIPE UNDERDRAIN ROUND	LF	670.00				670.00
6" NON-PERF. PIPE UNDERDRAIN RND.	LF	58.00				58.00
REMOVAL OF EXISTING BRIDGE STRUCTURE	LSUM					1.00

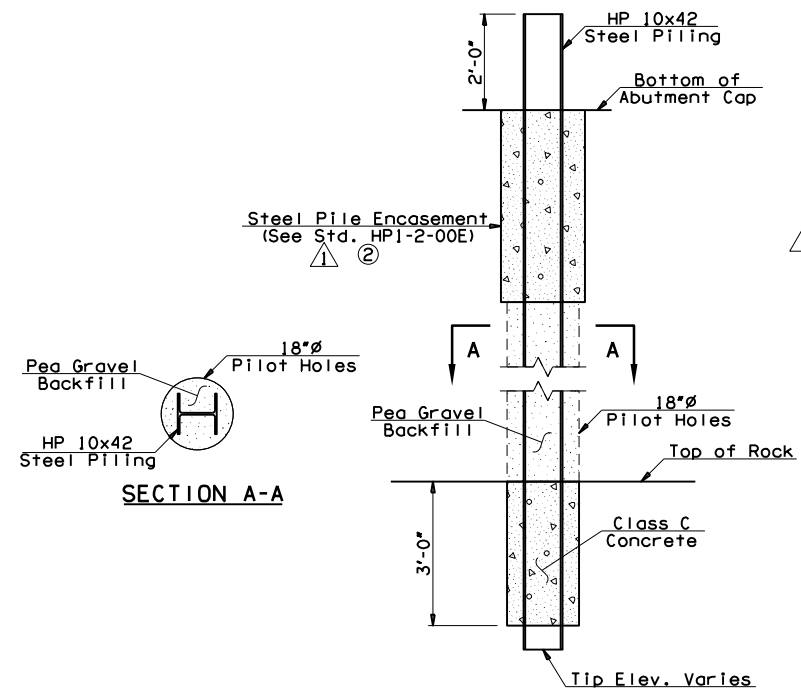
△ SUBSTRUCTURE STAKING DIAGRAM

① Abutment piles shall be oriented such that the face of the web is parallel with the face of the bridge seat.

TOP OF PILE SCHEDULE AT ABUTMENT NO. 1	
PILE	ELEVATION
HP 10x42	716.71

TOP OF PILE SCHEDULE AT ABUTMENT NO. 2	
PILE	ELEVATION
HP 10x42	716.67

② Forms for encasements may be omitted when soil conditions permit. The cost of Excavation, Forms, Class A Concrete and Welded Wire Fabric Reinforcing Steel for Steel Pile Encasements to be included in the contract unit prices of PILES, DRIVEN.



BACKFILL DETAILS AT PILOT HOLES

145TH OVER I-44 TULSA & ROGERS COUNTIES DESIGN M/J 1/13  
 BRIDGE 'A' DETAIL S/JL 2/14  
 STAKING DIAGRAM AND ITEMIZED QUANTITIES CHECK BRT 3/14  
**GARVER**  
 STATE OF OKLAHOMA DEPARTMENT OF TRANSPORTATION  
 JOB PIECE NO. 21899(04) SHEET NO. 106