

SAMPLING LEGEND:

R = Recovery
 N = Blow Counts per 12" (U.N.O)
 UC = Unconfined Compression
 LL = Liquid Limit
 PL = Plastic Limit
 PI = Plasticity Index
 RQD = Rock Quality Designation

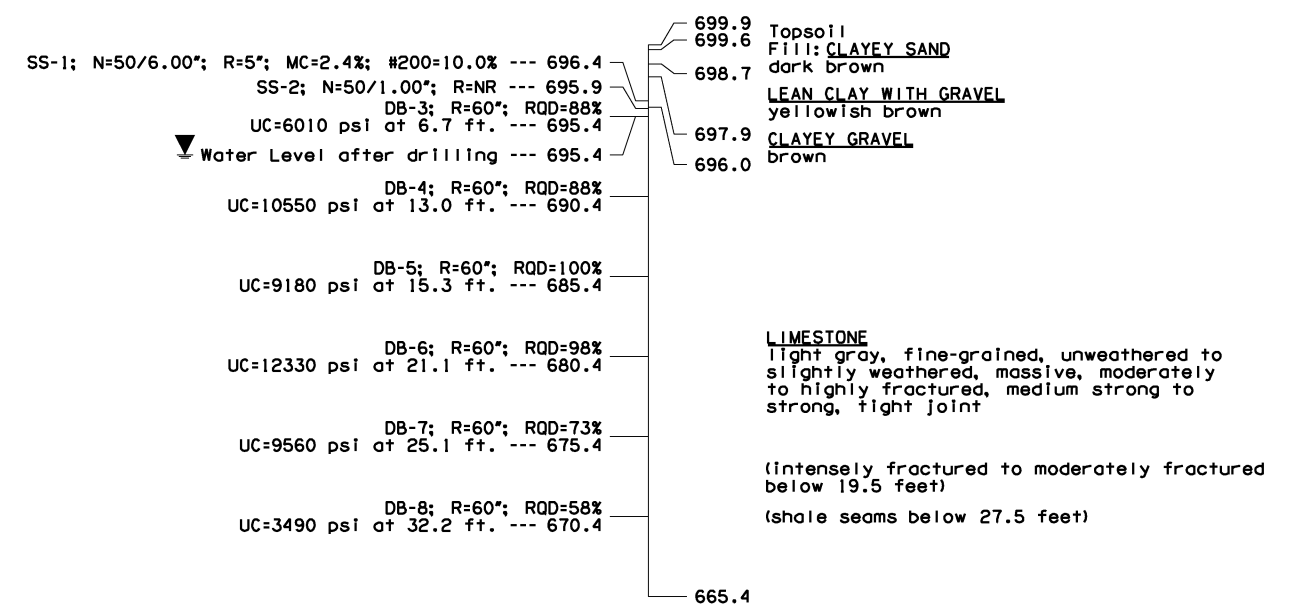
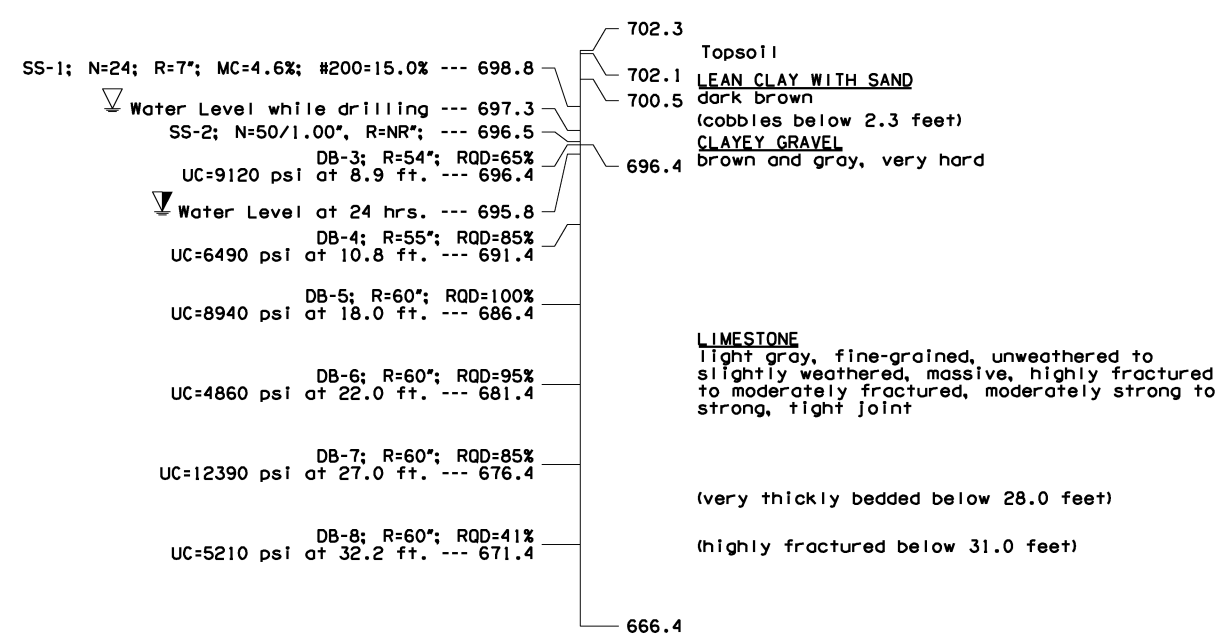
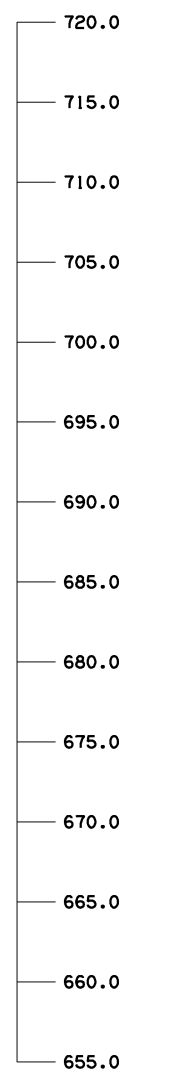
MC = Water Content
 ▽ = Water Level While Drilling
 ▽ = Water Level After Drilling
 ▽ = Water Level at 24 Hours

TESTING & DRILLING LEGEND:

DB = Diamond Bit Coring
 SS = Split Spoon
 TCP = Texas Cone Penetrometer

BORING NO. B-1
 Sta. 105+56.00, 55.00' Lt.
 Total Depth = 35.9 ft.

BORING NO. B-2
 Sta. 106+84.00, 23.00' Lt.
 Total Depth = 34.5 ft.



NOTES:

The Geotechnical Boring Logs shown were provided by Kleinfelder and are presented at the request of ODOT. This information was obtained solely for the use of the Engineer in design of this project. The accuracy and sufficiency of the information shown is not guaranteed. ODOT requires that bidders make their determinations as to all subsurface conditions and limits.
 Water Level Elevations shown were obtained at the time the borings were drilled and may fluctuate throughout the year.

145TH OVER I-44 BRIDGE "A"		TULSA & ROGERS COUNTIES		DESIGN	JTR	1/14
				DETAIL	SJL	1/14
				CHECK	BRT	3/14
FOUNDATION REPORT (SHEET 1 OF 3)				GARVER		
STATE OF OKLAHOMA	DEPARTMENT OF TRANSPORTATION					
		JOB PIECE NO. 21899(04)	SHEET NO. 103			