

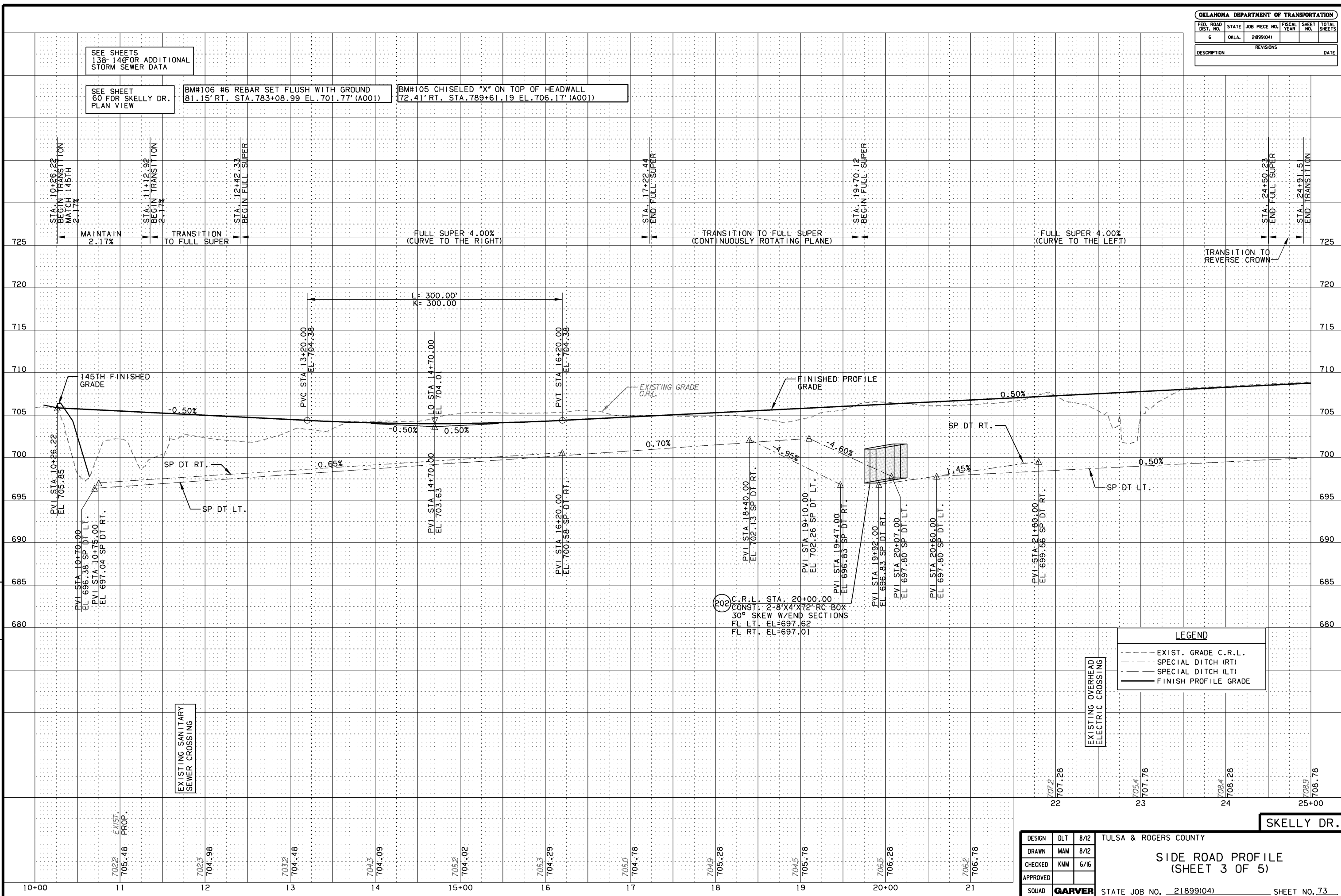
SEE SHEETS 138-146 FOR ADDITIONAL STORM SEWER DATA

SEE SHEET 60 FOR SKELLY DR. PLAN VIEW

BM#106 #6 REBAR SET FLUSH WITH GROUND 81.15' RT. STA. 783+08.99 EL. 701.77' (A001)

BM#105 CHISELED "X" ON TOP OF HEADWALL 72.41' RT. STA. 789+61.19 EL. 706.17' (A001)

SCALE: HORIZ.: 1"=50' VERT.: 1"=5'



LEGEND	
---	EXIST. GRADE C.R.L.
---	SPECIAL DITCH (RT)
---	SPECIAL DITCH (LT)
---	FINISH PROFILE GRADE

EXISTING SANITARY SEWER CROSSING

EXISTING OVERHEAD ELECTRIC CROSSING

202 C.R.L. STA. 20+00.00  
CONST. 2'-8"X4'X72" RC BOX  
30° SKEW W/END SECTIONS  
FL LT. EL=697.62  
FL RT. EL=697.01

DESIGN	DLT	8/12	TULSA & ROGERS COUNTY			
DRAWN	MAM	8/12	SIDE ROAD PROFILE (SHEET 3 OF 5)			
CHECKED	KMM	6/16				
APPROVED						
SQUAD	GARVER		STATE JOB NO.	21899(04)	SHEET NO.	73