

FED. ROAD DIST. NO.	STATE	JOB PIECE NO.	FISCAL YEAR	SHEET NO.	TOTAL SHEETS
6	OKLA.	21899(04)			
DESCRIPTION		REVISIONS		DATE	

SEE SHEET 59 FOR 145TH PLAN VIEW

BM#108 CHISELED "X" ON SIGN CONCRETE BASE
71.40' RT. STA. 779+93.40 EL. 700.60' (A001)

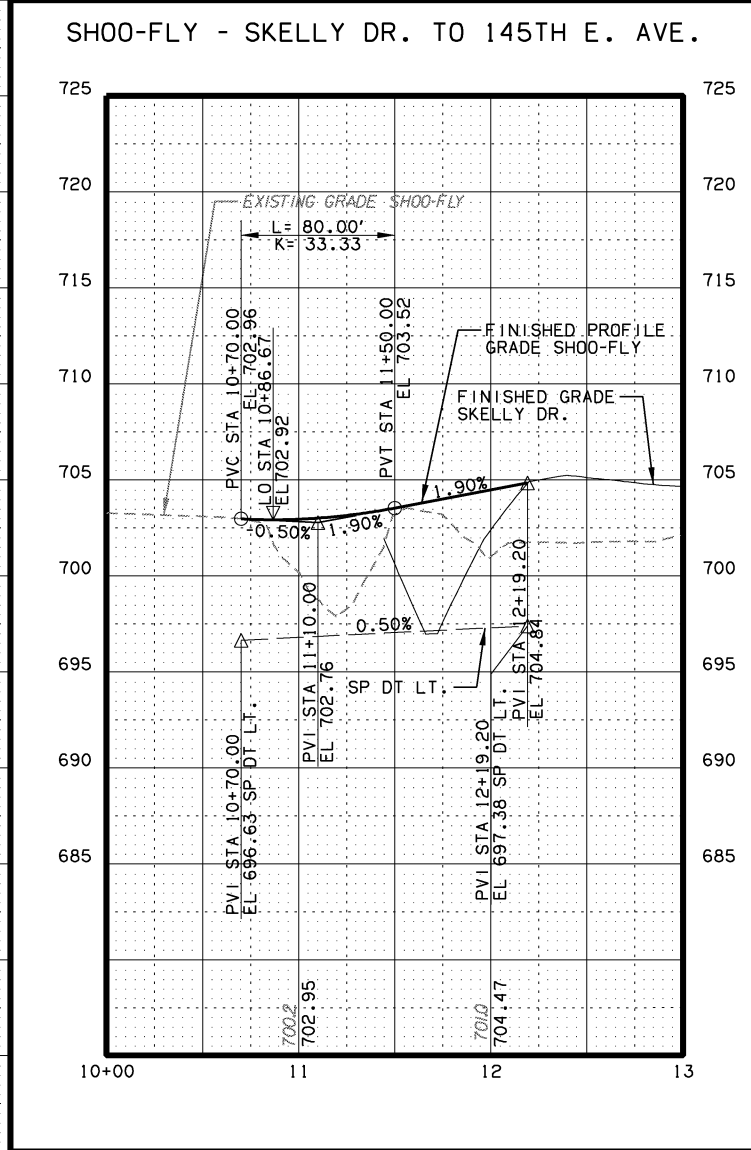
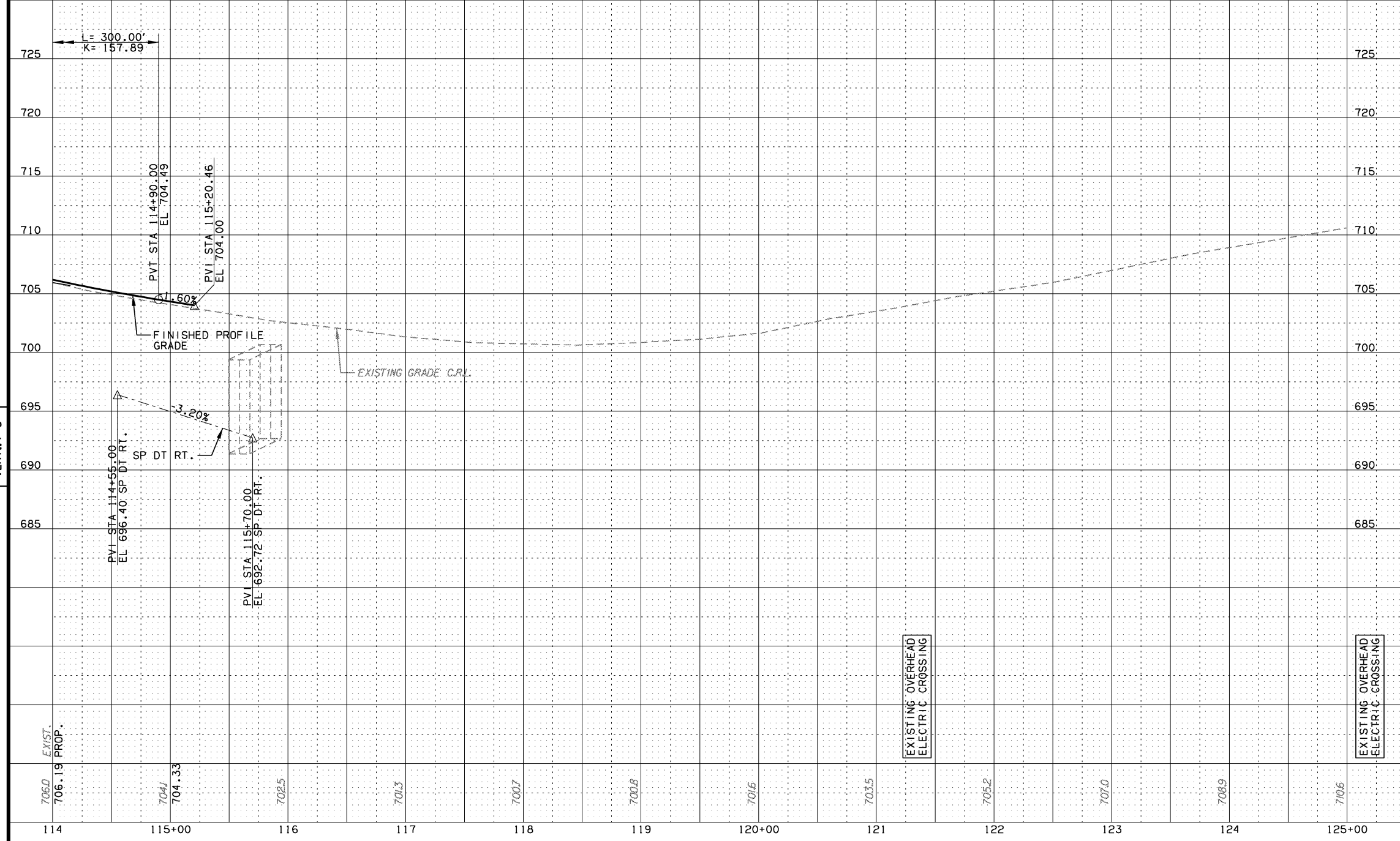
BM#105 CHISELED "X" ON TOP OF HEADWALL
72.41' RT. STA. 789+61.19 EL. 706.17' (A001)

LEGEND

- EXIST. GRADE C.R.L.
- - - SPECIAL DITCH (RT)
- - - SPECIAL DITCH (LT)
- FINISH PROFILE GRADE

SEE SHEET 59 FOR SHOO-FLY PLAN VIEW

SCALE:
HORIZ.: 1"=50'
VERT.: 1"=5'



DESIGN	DLT	8/12	TULSA & ROGERS COUNTY
DRAWN	MAM	8/12	
CHECKED	KMM	6/16	
APPROVED			
SQUAD	GARVER	STATE JOB NO. 21899(04)	SHEET NO. 72

**SIDE ROAD PROFILE
(SHEET 2 OF 5)**

145TH