

FED. ROAD DIST. NO.	STATE	JOB PIECE NO.	FISCAL YEAR	SHEET NO.	TOTAL SHEETS
6	OKLA.	21899(04)			

DESCRIPTION	REVISIONS	DATE

SEE SHEET 58 FOR 145TH PLAN VIEW

SEE SHEETS 138-146 FOR ADDITIONAL STORM SEWER DATA

BM#108 CHISELED "X" ON SIGN CONCRETE BASE
71.40' RT. STA. 779+93.40 EL. 700.60' (A001)

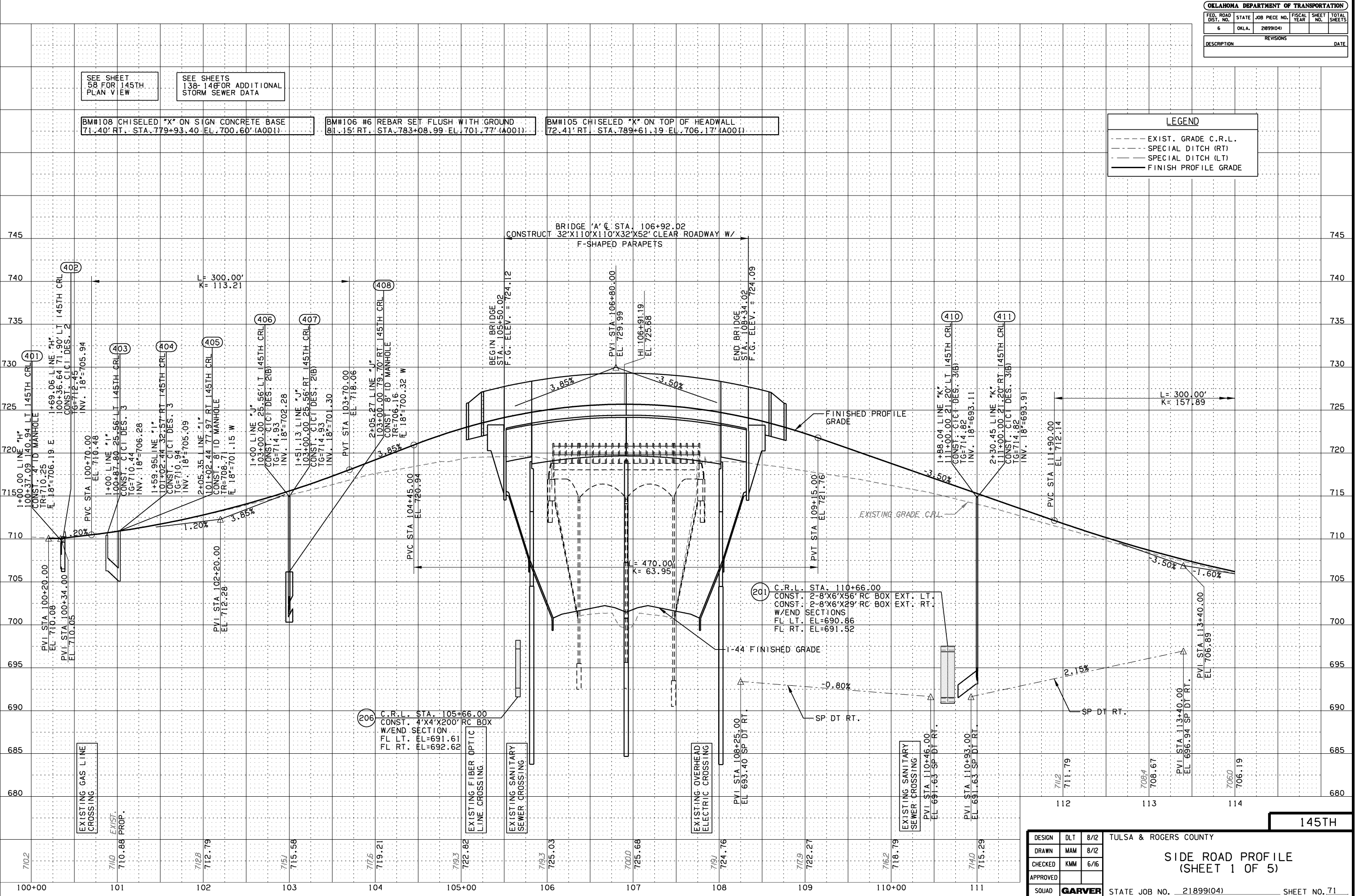
BM#106 #6 REBAR SET FLUSH WITH GROUND
81.15' RT. STA. 783+08.99 EL. 701.77' (A001)

BM#105 CHISELED "X" ON TOP OF HEADWALL
72.41' RT. STA. 789+61.19 EL. 706.17' (A001)

LEGEND

- EXIST. GRADE C.R.L.
- - - SPECIAL DITCH (RT)
- - - SPECIAL DITCH (LT)
- FINISH PROFILE GRADE

SCALE: HORIZ. 1"=50' VERT. 1"=5'



DESIGN	DLT	8/12
DRAWN	MAM	8/12
CHECKED	KMM	6/16
APPROVED		
SQUAD	GARVER	

TULSA & ROGERS COUNTY
SIDE ROAD PROFILE
 (SHEET 1 OF 5)
 STATE JOB NO. 21899(04) SHEET NO. 71