

FED. ROAD DIST. NO.	STATE	JOB PIECE NO.	FISCAL YEAR	SHEET NO.	TOTAL SHEETS
6	OKLA.	21899(04)			
DESCRIPTION			REVISIONS	DATE	

LEGEND	
---	EXIST. GRADE P.G.L.
- - -	SPECIAL DITCH (RT)
- - -	SPECIAL DITCH (LT)
—	FINISH PROFILE GRADE

SEE SHEET 55 FOR RAMP A PLAN VIEW

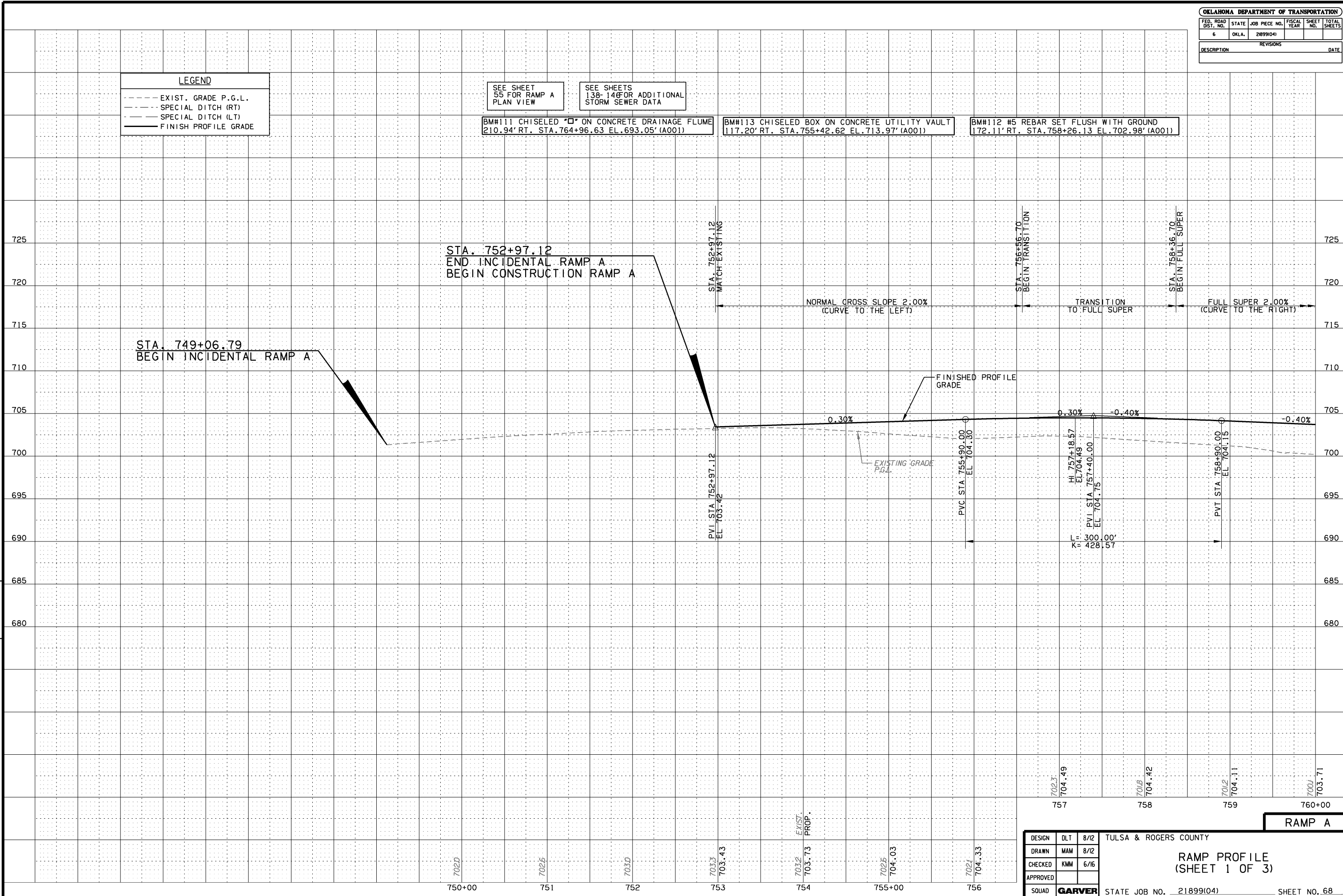
SEE SHEETS 138-146 FOR ADDITIONAL STORM SEWER DATA

BM#111 CHISELED "□" ON CONCRETE DRAINAGE FLUME
210.94' RT. STA. 764+96.63 EL. 693.05' (A001)

BM#113 CHISELED BOX ON CONCRETE UTILITY VAULT
117.20' RT. STA. 755+42.62 EL. 713.97' (A001)

BM#112 #5 REBAR SET FLUSH WITH GROUND
172.11' RT. STA. 758+26.13 EL. 702.98' (A001)

SCALE:
HORIZ.: 1"=50'
VERT.: 1"=5'



DESIGN	DLT	8/12
DRAWN	MAM	8/12
CHECKED	KMM	6/16
APPROVED		
SQUAD	GARVER	

TULSA & ROGERS COUNTY
RAMP PROFILE
 (SHEET 1 OF 3)
 STATE JOB NO. 21899(04) SHEET NO. 68