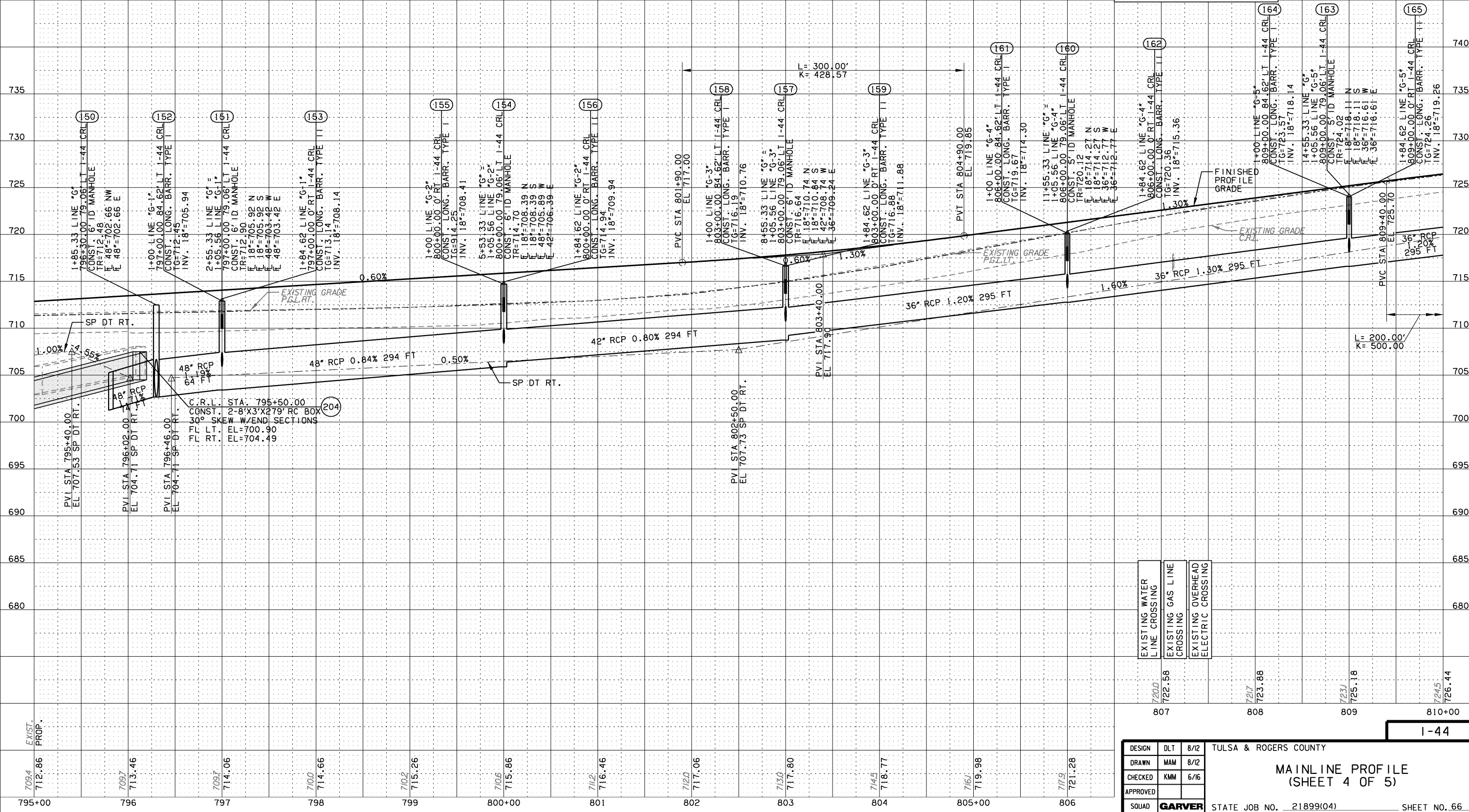


SEE SHEET 53 FOR I-44 PLAN VIEW
SEE SHEETS 138-146 FOR ADDITIONAL STORM SEWER DATA

BM#104 FOUND ODOT BRASSCAP STA. T-72-540
63.78' RT. STA. 796.13.48 EL. 709.46' (A001)
BM#102 #5 REBAR SET FLUSH WITH GROUND
100.46' RT. STA. 806+97.74 EL. 718.70' (A001)
BM#103 #6 REBAR SET FLUSH WITH GROUND
96.46' RT. STA. 802+12.52 EL. 710.27' (A001)

LEGEND	
---	EXIST. GRADE C.R.L.
---	EXIST. GRADE P.G.L.(RT)
---	EXIST. GRADE P.G.L.(LT)
---	SPECIAL DITCH (RT)
---	SPECIAL DITCH (LT)
---	FINISH PROFILE GRADE

SCALE:
HORIZ.: 1"=50'
VERT.: 1"=5'



EXISTING WATER LINE CROSSING	720.0
EXISTING GAS LINE CROSSING	722.58
EXISTING OVERHEAD ELECTRIC CROSSING	723.88
	725.18
	724.44

DESIGN	DLT	8/12
DRAWN	MAM	8/12
CHECKED	KMM	6/16
APPROVED		
SQUAD	GARVER	

TULSA & ROGERS COUNTY
MAINLINE PROFILE
(SHEET 4 OF 5)
STATE JOB NO. 21899(04) SHEET NO. 66