

UTILITY CONTACTS:
 AT&T / SWB (COMMUNICATION LINES) 918-237-9768
 MBO VIDEO (COMMUNICATION LINES) 918-346-2241
 LEVEL 3 COMM (COMMUNICATION LINES) 918-519-9019
 O.D.O.T. (ELECTRIC LINES) 405-637-7036
 PSD (ELECTRIC LINES) 918-599-2272
 CITY OF TULSA (WATER/SEWER LINES) 918-596-9566

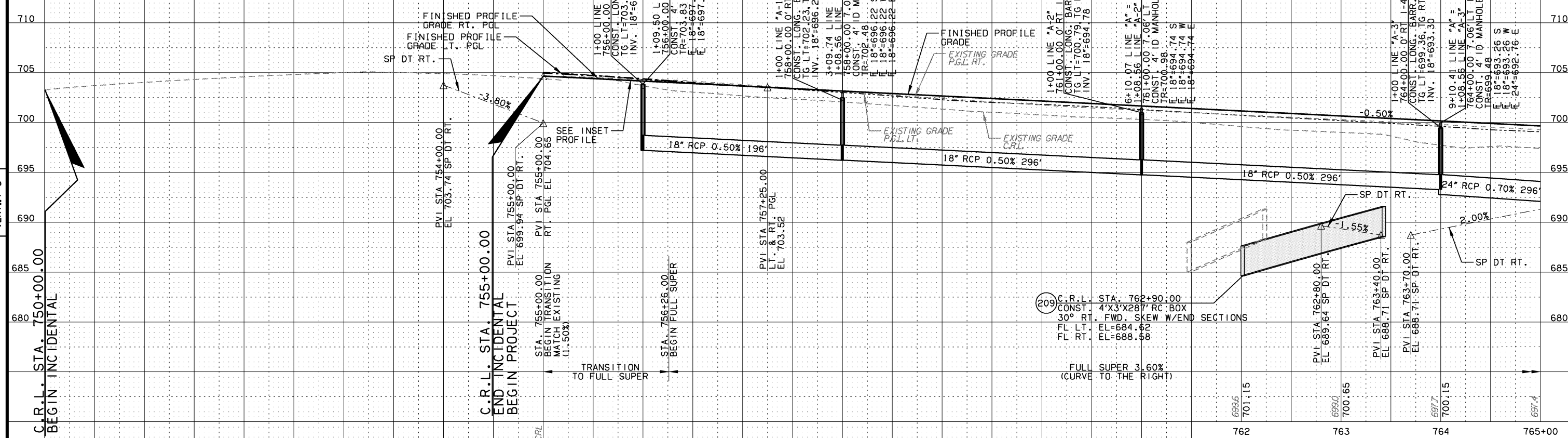
SEE SHEET 50 FOR I-44 PLAN VIEW

SEE SHEETS 138-146 FOR ADDITIONAL STORM SEWER DATA

LEGEND

- EXIST. GRADE C.R.L.
- EXIST. GRADE P.G.L.(RT)
- EXIST. GRADE P.G.L.(LT)
- - - SPECIAL DITCH (RT)
- - - SPECIAL DITCH (LT)
- FINISH PROFILE GRADE

SCALE:
 HORIZ.: 1"=50'
 VERT.: 1"=5'



209 C.R.L. STA. 762+90.00
 CONST. 4'X3'X28' RC BOX
 30° RT. FWD. SKEW W/END SECTIONS
 FL LT. EL=684.62
 FL RT. EL=688.58

DESIGN	DLT	8/12
DRAWN	MAM	8/12
CHECKED	KMM	6/16
APPROVED		
SQUAD	GARVER	

TULSA & ROGERS COUNTY
MAINLINE PROFILE
 (SHEET 1 OF 5)
 STATE JOB NO. 21899(04) SHEET NO. 63