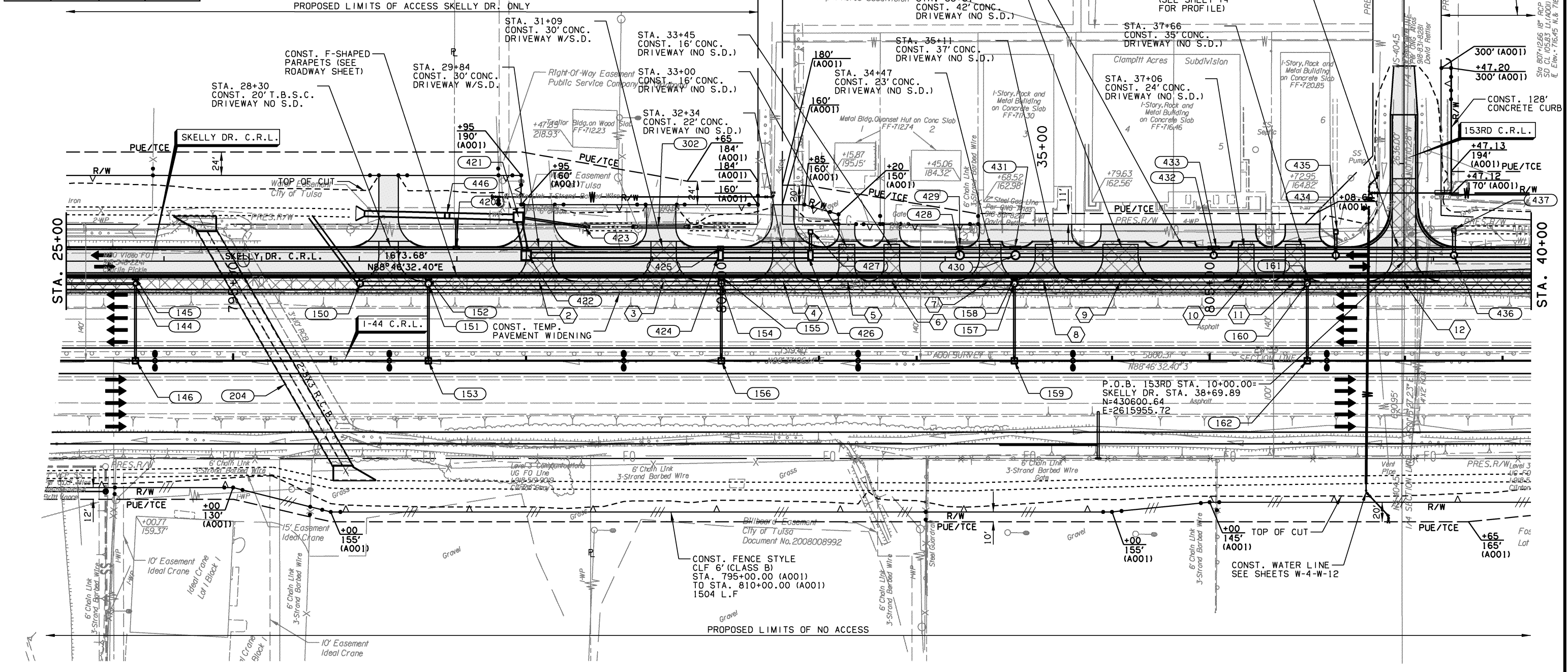
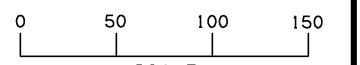


TEMPORARY DRIVEWAY			
NUMBER	STATION	WIDTH	SURFACE
1	23+71	20'	T.B.S.C.
2	29+84	26'	T.B.S.C.
3	31+09	26'	T.B.S.C.
4	32+34	22'	T.B.S.C.
5	33+00	16'	T.B.S.C.
6	33+45	16'	T.B.S.C.
7	34+47	22'	T.B.S.C.
8	35+11	18'	T.B.S.C.
9	35+81	36'	T.B.S.C.
10	37+06	16'	T.B.S.C.
11	37+66	20'	T.B.S.C.
12	38+69	24'	T.B.S.C.
13	41+41	36'	T.B.S.C.
14	46+61	36'	T.B.S.C.
15	48+20	36'	T.B.S.C.
16	28+30	20'	T.B.S.C.

LEGEND	
	PROPOSED PAVEMENT
	TEMP. PAVEMENT
	DRAINAGE STR. NUMBER
	TEMP. DRIVE
	PROPOSED LIGHT FIXTURE
	PROPOSED OVERHEAD SIGN STR.

SEC 34 T20N R14E

OKLAHOMA DEPARTMENT OF TRANSPORTATION					
FED. ROAD DIST. NO.	STATE	JOB PIECE NO.	FISCAL YEAR	SHEET NO.	TOTAL SHEETS
6	OKLA.	21899041			



SEE SHEET 74 FOR SKELLY DR. PROFILE

SEE SHEETS 37 - 48 FOR PLAN GEOMETRIC DATA

SEE SHEETS 138-146 FOR PLAN STORM SEWER DATA

BM#104 FOUND ODOT BRASSCAP STA. T-72-540 63.78' RT. STA. 796.13.48 EL. 709.46' (A001)

BM#103 #6 REBAR SET FLUSH WITH GROUND 96.46' RT. STA. 802+12.52 EL. 710.27' (A001)

BM#102 #5 REBAR SET FLUSH WITH GROUND 100.46' RT. STA. 806+97.74 EL. 718.70' (A001)

PRES./PROP. R/W-U/E AND FENCE STATIONS BASED ON SURVEY C. ALL OTHER CONST. STATIONS BASED ON C.R.L.

SEC 3 T19N R14E

DESIGN	DLT	8/12	TULSA & ROGERS COUNTIES
DRAWN	MAM	8/12	
CHECKED	KMM	6/16	
APPROVED			
SQUAD	GARVER	STATE JOB NO. 21899041	SHEET NO. 61

SIDE ROAD PLAN (SHEET 4 OF 5)