

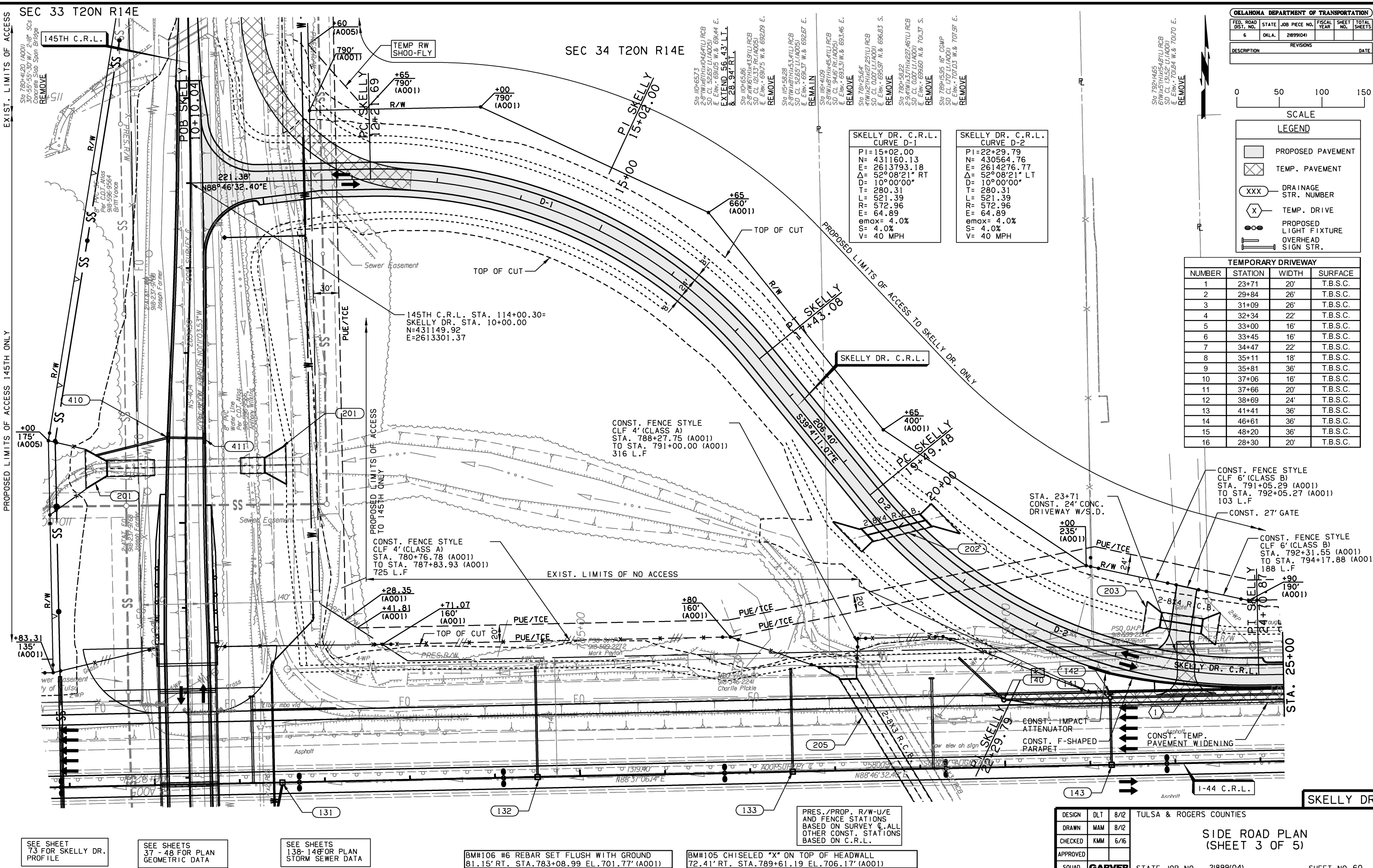
OKLAHOMA DEPARTMENT OF TRANSPORTATION					
FED. ROAD DIST. NO.	STATE	JOB PIECE NO.	FISCAL YEAR	SHEET NO.	TOTAL SHEETS
6	OKLA.	21899(04)			
DESCRIPTION		REVISIONS		DATE	



LEGEND	
[Symbol]	PROPOSED PAVEMENT
[Symbol]	TEMP. PAVEMENT
[Symbol]	DRAINAGE STR. NUMBER
[Symbol]	TEMP. DRIVE
[Symbol]	PROPOSED LIGHT FIXTURE
[Symbol]	OVERHEAD SIGN STR.

TEMPORARY DRIVEWAY			
NUMBER	STATION	WIDTH	SURFACE
1	23+71	20'	T.B.S.C.
2	29+84	26'	T.B.S.C.
3	31+09	26'	T.B.S.C.
4	32+34	22'	T.B.S.C.
5	33+00	16'	T.B.S.C.
6	33+45	16'	T.B.S.C.
7	34+47	22'	T.B.S.C.
8	35+11	18'	T.B.S.C.
9	35+81	36'	T.B.S.C.
10	37+06	16'	T.B.S.C.
11	37+66	20'	T.B.S.C.
12	38+69	24'	T.B.S.C.
13	41+41	36'	T.B.S.C.
14	46+61	36'	T.B.S.C.
15	48+20	36'	T.B.S.C.
16	28+30	20'	T.B.S.C.

SKELLY DR. C.R.L. CURVE D-1		SKELLY DR. C.R.L. CURVE D-2	
PI=15+02.00	PI=22+29.79	PI=22+29.79	PI=22+29.79
N=431160.13	N=430564.76	N=430564.76	N=430564.76
E=2613793.18	E=2614276.77	E=2614276.77	E=2614276.77
Δ=52°08'21" RT	Δ=52°08'21" LT	Δ=52°08'21" LT	Δ=52°08'21" LT
D=10°00'00"	D=10°00'00"	D=10°00'00"	D=10°00'00"
T=280.31	T=280.31	T=280.31	T=280.31
L=521.39	L=521.39	L=521.39	L=521.39
R=572.96	R=572.96	R=572.96	R=572.96
E=64.89	E=64.89	E=64.89	E=64.89
emax=4.0%	emax=4.0%	emax=4.0%	emax=4.0%
S=4.0%	S=4.0%	S=4.0%	S=4.0%
V=40 MPH	V=40 MPH	V=40 MPH	V=40 MPH



SEE SHEET 73 FOR SKELLY DR. PROFILE

SEE SHEETS 37 - 48 FOR PLAN GEOMETRIC DATA

SEE SHEETS 138-146 FOR PLAN STORM SEWER DATA

BM#106 #6 REBAR SET FLUSH WITH GROUND
81.15' RT. STA. 783+08.99 EL. 701.77' (A001)

BM#105 CHISELED *X* ON TOP OF HEADWALL
72.41' RT. STA. 789+61.19 EL. 706.17' (A001)

PRES./PROP. R/W-U/E AND FENCE STATIONS BASED ON SURVEY @ ALL OTHER CONST. STATIONS BASED ON C.R.L.

DESIGN	DLT	8/12	TULSA & ROGERS COUNTIES
DRAWN	MAM	8/12	
CHECKED	KMM	6/16	
APPROVED			
SQUAD	GARVER	STATE JOB NO. 21899(04)	SHEET NO. 60

SIDE ROAD PLAN (SHEET 3 OF 5)