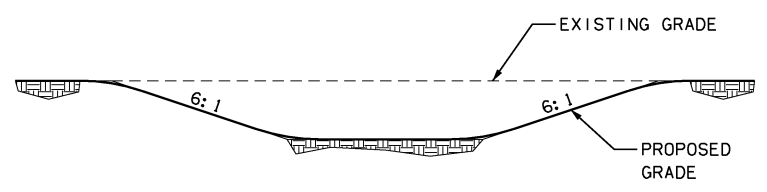
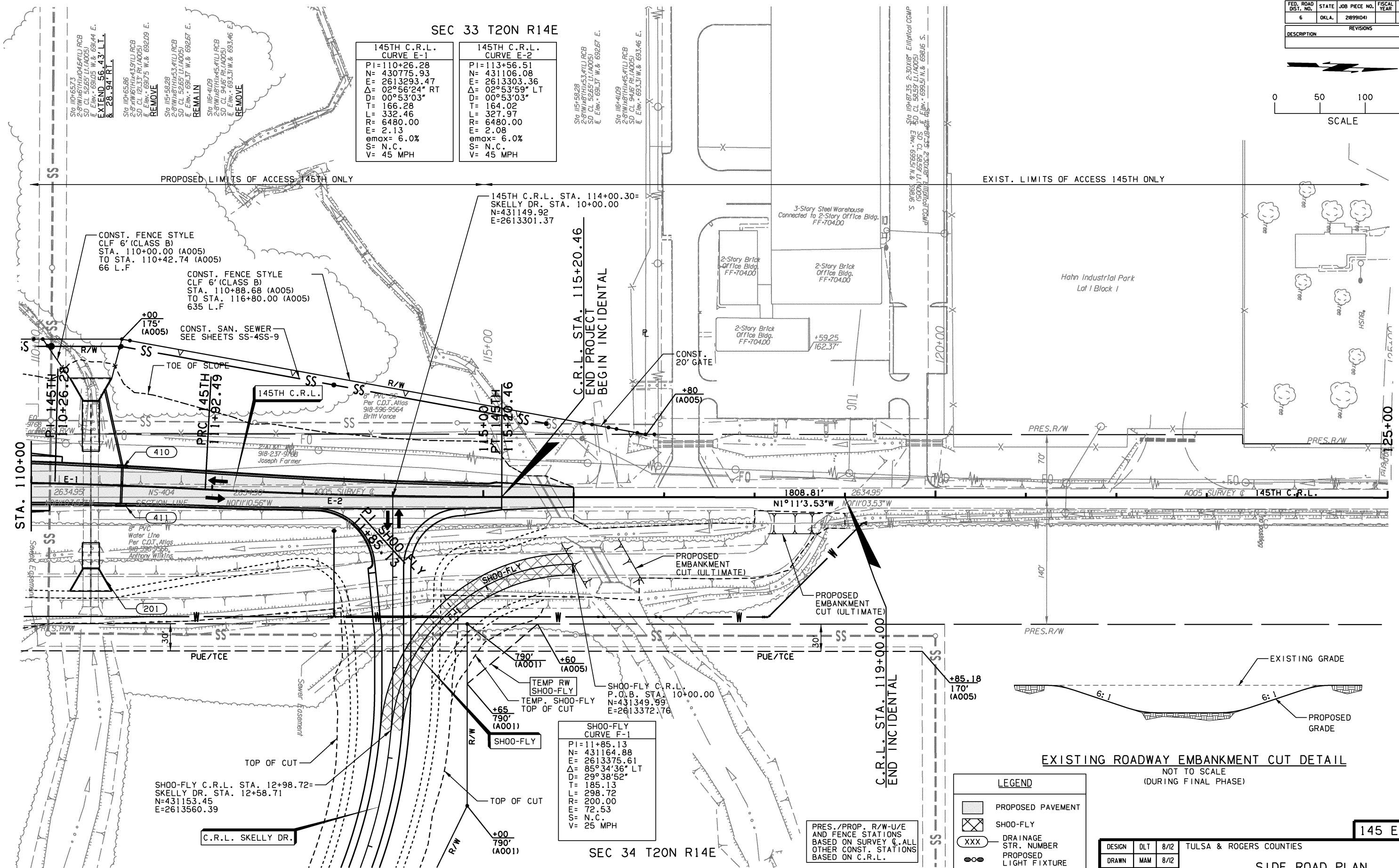


SEC 33 T20N R14E

145TH C.R.L. CURVE E-1	145TH C.R.L. CURVE E-2
PI=110+26.28	PI=113+56.51
N= 430775.93	N= 431106.08
E= 2613293.47	E= 2613303.36
Δ = 02°56'24" RT	Δ = 02°53'59" LT
D= 00°53'03"	D= 00°53'03"
T= 166.28	T= 164.02
L= 332.46	L= 327.97
R= 6480.00	R= 6480.00
E= 2.13	E= 2.08
e _{max} = 6.0%	e _{max} = 6.0%
S= N.C.	S= N.C.
V= 45 MPH	V= 45 MPH



LEGEND

	PROPOSED PAVEMENT
	SHOO-FLY
	DRAINAGE STR. NUMBER
	PROPOSED LIGHT FIXTURE

DESIGN	DLT	8/12	TULSA & ROGERS COUNTIES
DRAWN	MAM	8/12	SIDE ROAD PLAN (SHEET 2 OF 5)
CHECKED	KMM	6/16	
APPROVED			
SQUAD	GARVER	STATE JOB NO. 21899(04)	SHEET NO. 59

SHOO-FLY CURVE F-1

PI=11+85.13
N= 431164.88
E= 2613375.61
Δ = 85°34'36" LT
D= 29°38'52"
T= 185.13
L= 298.72
R= 200.00
E= 72.53
S= N.C.
V= 25 MPH

SEE SHEET 72 FOR 145TH PROFILE

SEE SHEETS 37 - 48 FOR PLAN GEOMETRIC DATA

SEE SHEETS 138- 146 FOR PLAN STORM SEWER DATA

BM#108 CHISELED "X" ON SIGN CONCRETE BASE
71.40' RT. STA. 779+93.40 EL. 700.60' (A001)

BM#105 CHISELED "X" ON TOP OF HEADWALL
72.41' RT. STA. 789+61.19 EL. 706.17' (A001)