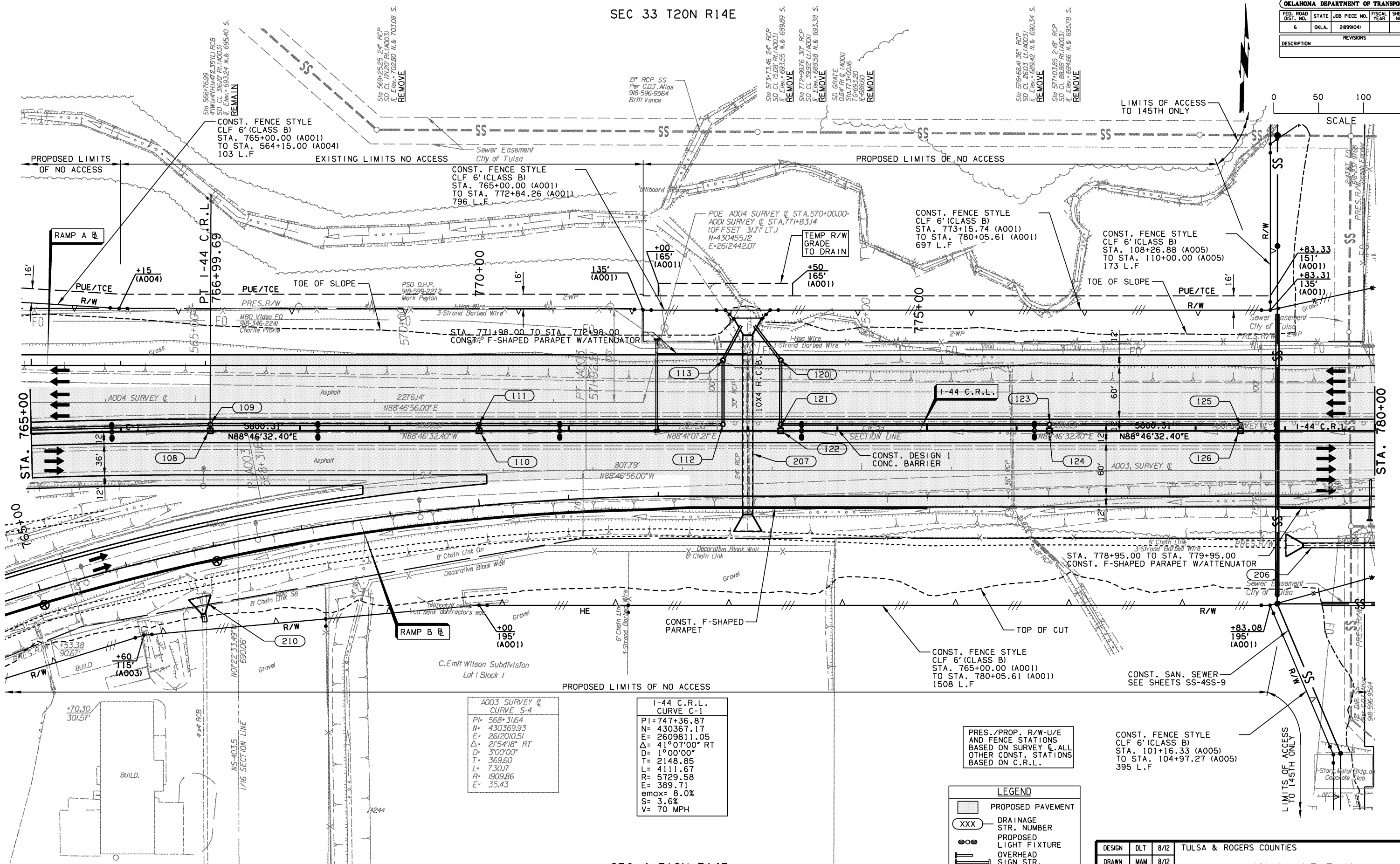
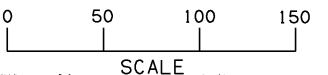


SEC 33 T20N R14E

OKLAHOMA DEPARTMENT OF TRANSPORTATION						
FED. ROAD DIST. NO.	STATE	JOB PIECE NO.	FISCAL YEAR	SHEET NO.	TOTAL SHEETS	
6	OKLA.	21899(04)				
DESCRIPTION						REVISIONS
						DATE



SEC 4 T19N R14E

A003 SURVEY @ CURVE S-4

PI=	568+31.64
N=	430369.93
E=	2612010.51
Δ=	21°54'18" RT
D=	3'00'00"
T=	369.60
L=	730.17
R=	1909.86
E=	35.43

I-44 C.R.L. CURVE C-1

PI=	747+36.87
N=	430367.17
E=	2609811.05
Δ=	41°07'00" RT
D=	1'00'00"
T=	2148.85
L=	4111.67
R=	5729.58
E=	389.71
emax=	8.0%
S=	3.6%
V=	70 MPH

PRES./PROP. R/W-U/E AND FENCE STATIONS BASED ON SURVEY @. ALL OTHER CONST. STATIONS BASED ON C.R.L.

LEGEND

[Shaded Box]	PROPOSED PAVEMENT
(XXX)	DRAINAGE STR. NUMBER
[Circle with dot]	PROPOSED LIGHT FIXTURE
[T-shaped symbol]	OVERHEAD SIGN STR.

DESIGN	DLT	8/12	TULSA & ROGERS COUNTIES
DRAWN	MAM	8/12	
CHECKED	KMM	6/16	
APPROVED			
SQUAD	<b>GARVER</b>	STATE JOB NO. 21899(04)	SHEET NO. 51

MAINLINE PLAN (SHEET 2 OF 5)

- SEE SHEET 64 FOR I-44 PROFILE
- SEE SHEETS 37 - 48 FOR PLAN GEOMETRIC DATA
- SEE SHEETS 138 - 146 FOR PLAN STORM SEWER DATA
- BM#110 #5 REBAR SET FLUSH WITH GROUND 94.23' RT. STA. 769+15.39 EL. 694.13' (A001)
- BM#109 CHISELED "X" ON TOP OF HEADWALL 83.04' RT. STA. 775+98.38 EL. 694.67' (A001)
- BM#108 CHISELED "X" ON SIGN CONCRETE BASE 71.40' RT. STA. 779+93.40 EL. 700.60' (A001)