

**SURFACE PREPARATION AND FINISHING**

**COLOR STAIN SYSTEM APPLICATION INSTALLERS:**

The Manufacturer or Manufacturer's authorized representative shall have a minimum of five years experience of application of concrete stain. The Contractor shall submit the resume of the qualified installer to the Engineer for written approval.

**SPECIAL SURFACE PREPARATION:**

Work under this Section shall include surface cleaning preparation to assure the surface is free of all latency, dirt, dust, grease, efflorescence, paint, and any foreign material prior to the stain application, in accordance with the manufacturer's recommendations. The Contractor shall correct, at his own cost, any surface problems created as a direct result of the surface preparation methods used.

The Contractor is advised that sandblasting will not be allowed for cleaning concrete surfaces, as it will reduce the special surface texture specified elsewhere herein. Pressure washing with water (minimum 3000 psi) is the preferred method of removing latent materials. If cleaned by pressure washing, a pressure of 3000 psi is a rate of three to four gallons per minute using a fan nozzle held perpendicular to the surface at a distance of one to two feet. The completed surface shall be free of blemishes, discolorations, surface voids, and conspicuous form marks to the satisfaction of the Engineer.

**PENETRATING STAIN STANDARDS:**

Penetrating Stain shall be Anchor Paint Waterborne Acrylic Concrete Stain, Kwai Paint Stone FX Acrylic/Polysiloxane Skin or approved equal.

**WATER REPELLENT:**

The Contractor shall use a water repellent that conforms to Section 515 - "PENETRATING WATER REPELLENT TREATMENT" of the Standard Specifications. Water repellent shall be applied as specified in the notes and plans. Water repellent shall be applied after color staining operations.

**SURFACE PREPARATION AND FINISHING (CONTINUED)**

**COLOR SELECTION:**

The overall bridge stain will be applied by the Contractor to all exposed concrete areas of the bridge as shown in the plans. The treatment shall be applied in accordance with the manufacturer's instructions and specifications. Any additional manufacturer requirements necessary to obtain full warranty shall also apply.

All exposed surfaces of the textured cast-in-place Wing Walls, Parapets, and Parapet termini shall be finished and stained.

The contractor shall submit manufacturer's installation instructions and product data for the textured surface treatment. Shop drawings shall indicate the form liner layout and termination details, as well as the locations of backup rustication, reveal, and chamfer strips, joints and form ties.

The recommended terracotta color on exterior concrete beams shall have a Fed. Color No. of 32276. See "BEAM STAINING DETAIL" for application areas.

The recommended beige color on smooth bridge surfaces including Slope Walls, Pier Columns and Caps, Abutment Cap and Diaphragm, Wing Wall, back face of Parapet, and Shield shall have a Fed. Color No. of 33564.

Staining on patterned Wing Wall, Parapet termini, and Parapet surfaces shall have a base color of smokey beige. Once the Contractor has stained all patterned surfaces, Accent colors of charcoal, dark walnut, and washed suede will be hand painted on the patterned Wing Wall, Parapet termini, and Parapet surfaces with the Ledge Stone pattern.

Staining on the shield shall follow:

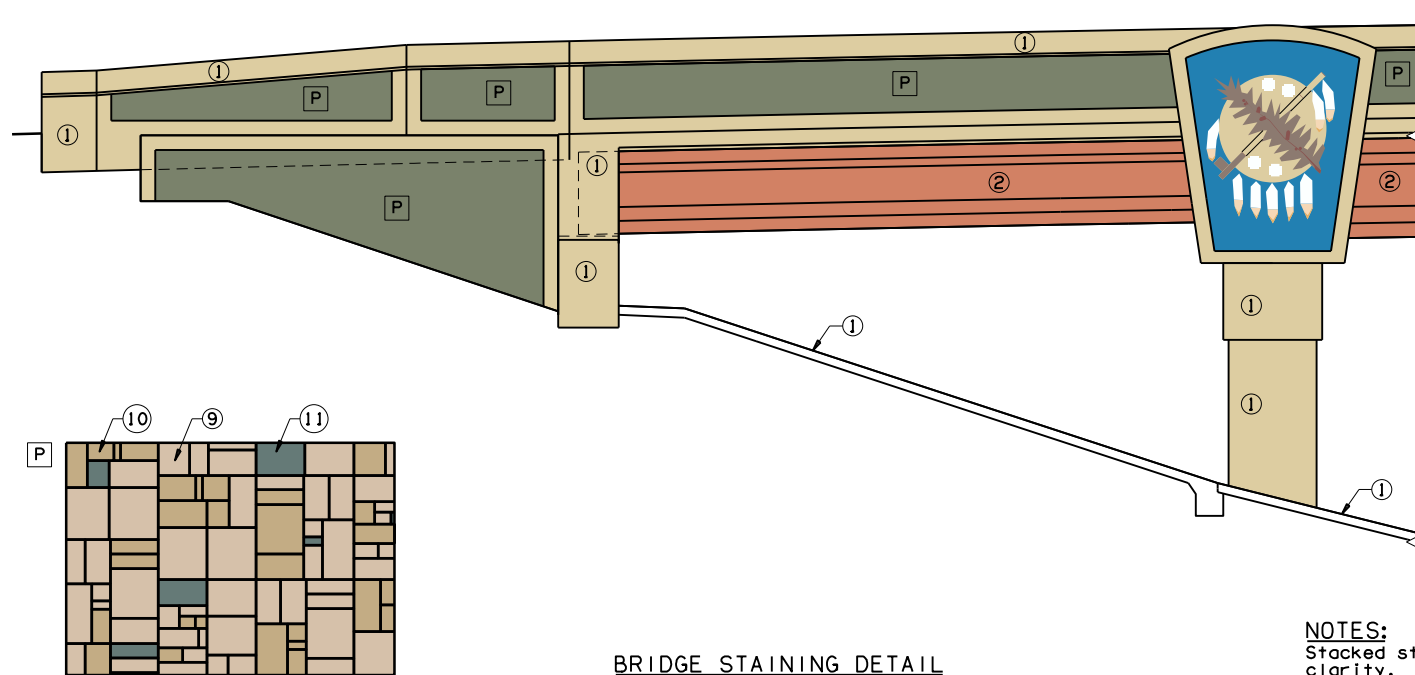
Federal Standard Color No.

- ① 33564
- ② 32276
- ③ 35183
- ④ 37925
- ⑤ 33531
- ⑥ 33538
- ⑦ 30111
- ⑧ 34089
- ⑨ 33531
- ⑩ 33448
- ⑪ 34148

OKLAHOMA DEPARTMENT OF TRANSPORTATION					
FED. ROAD DIST. NO.	STATE	JOB PIECE NO.	FISCAL YEAR	SHEET NO.	TOTAL SHEETS
6	OKLA.	21899(04)			
DESCRIPTION			REVISIONS		DATE
Added Sheet					08/22/2016

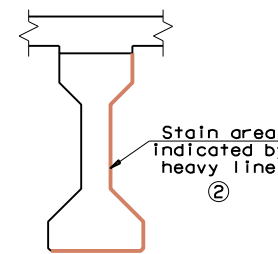
**METHOD OF MEASUREMENT AND BASIS OF PAYMENT**

All costs of the artistic aesthetic treatments applied to Slope Walls, Abutments, Piers, Beams, Parapets, and Termini of Parapets, and other elements listed herein including the development of shop drawings, working drawings, creating and furnishing of prototypes, master molds, test panes, furnishing of release agents, sealers, materials, labor, equipment, and any other incidentals necessary to compete work as shown in the plans shall be considered subsidiary to the items bid on.

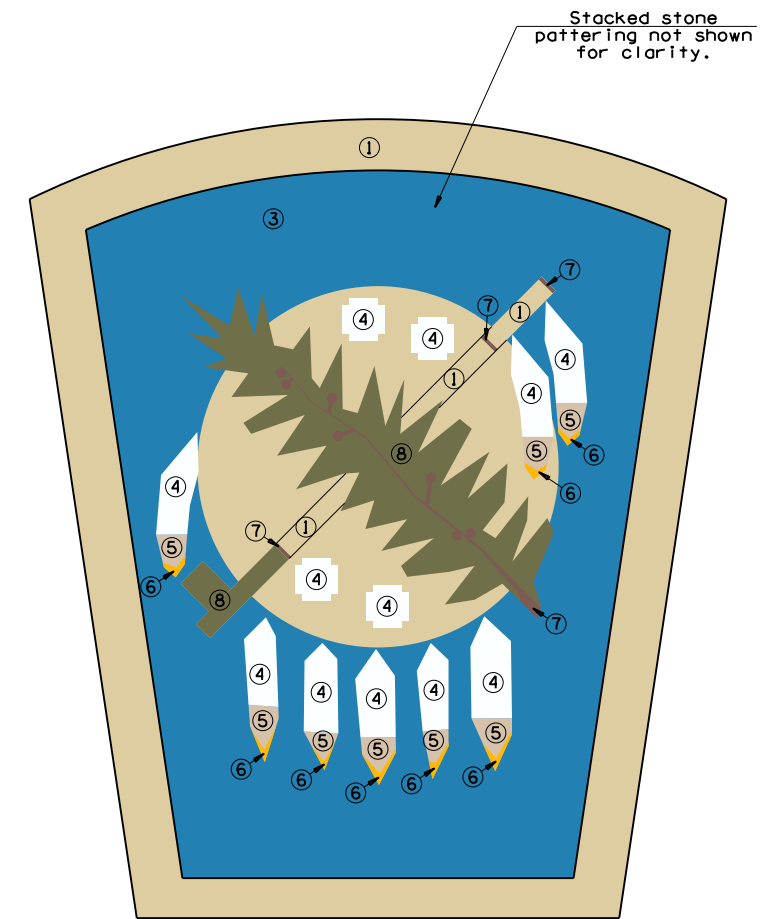


**BRIDGE STAINING DETAIL**

**NOTES:**  
Stacked stone pattering not shown in details for clarity.



**BEAM STAINING DETAIL**



**SHIELD STAINING DETAIL**

145TH OVER I-44 BRIDGE 'A'	TULSA & ROGERS COUNTIES	DESIGN	MJY	7/16
		DETAIL	JMO	8/16
		CHECK	MJY	8/16
<b>AESTHETIC NOTES (BRIDGE)</b> (SHEET 2 OF 2)				
<b>GARVER</b>				
<b>STATE OF OKLAHOMA</b>		DEPARTMENT OF TRANSPORTATION		
		JOB PIECE NO. 21899(04)	SHEET NO. 15B	